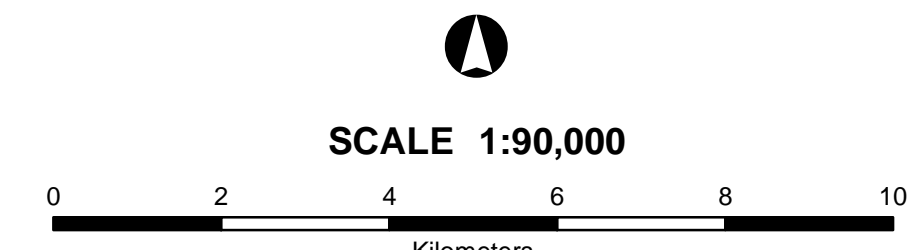




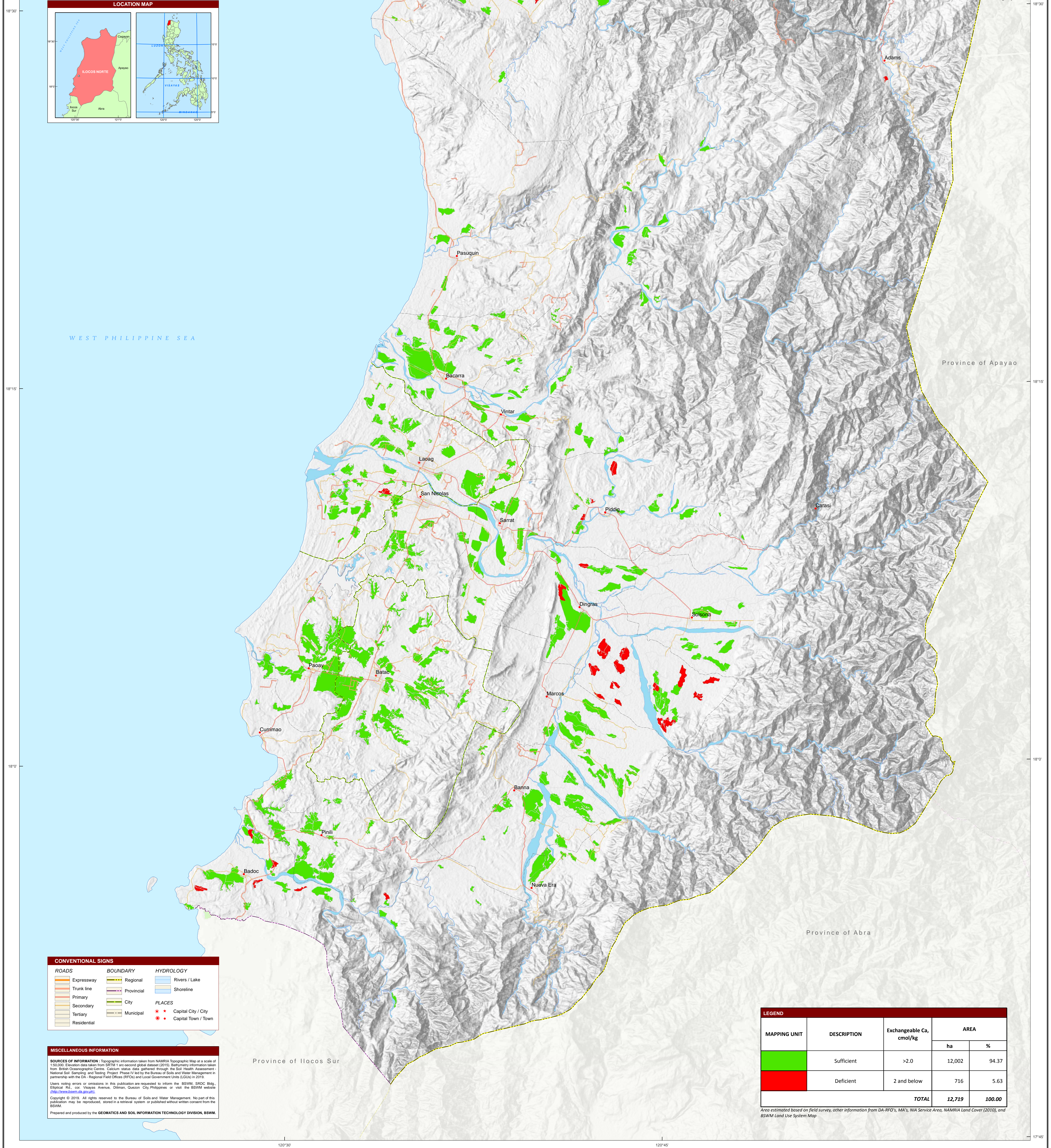
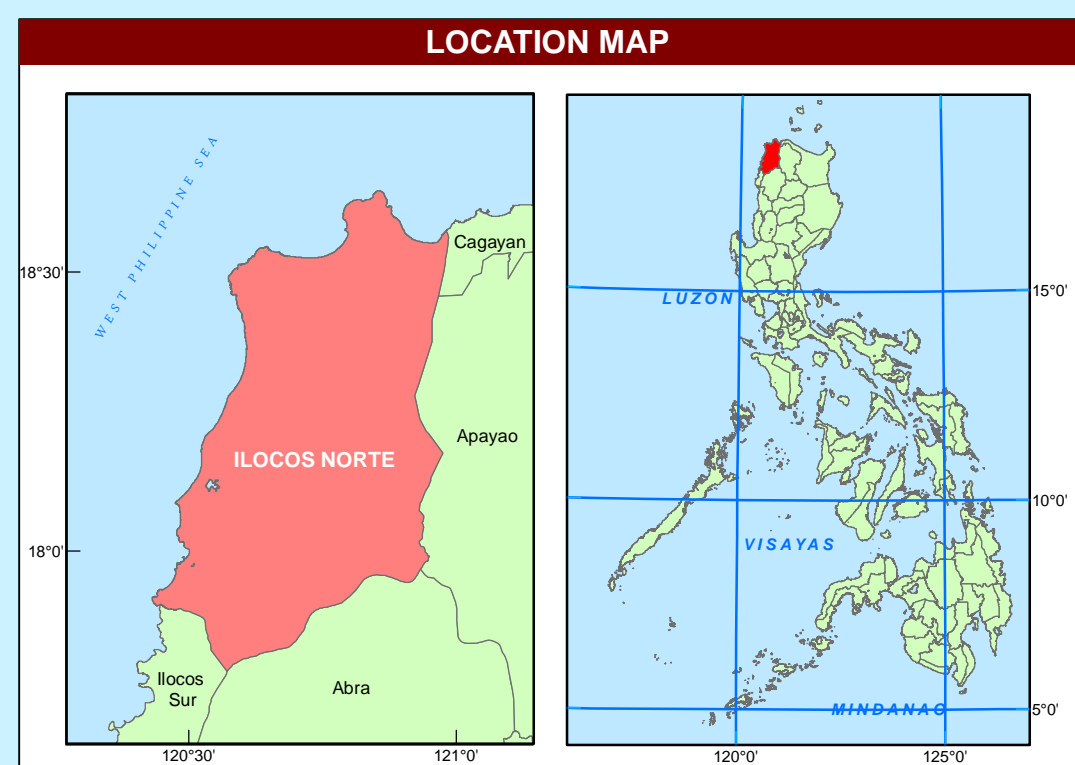
REPUBLIC OF THE PHILIPPINES
DEPARTMENT OF AGRICULTURE
BUREAU OF SOILS AND
WATER MANAGEMENT
 Elliptical Road Cor. Visayas Ave., Diliman, Quezon City

NUTRIENT STATUS MAP : CALCIUM
(Key Corn Areas)

PROVINCE OF ILOCOS NORTE



Projection : Transverse Mercator
 Datum : PHS 1992
 DISCLAIMER : All political boundaries are not authoritative



CONVENTIONAL SIGNS		
ROADS	BOUNDARY	HYDROLOGY
Expressway	Regional	Rivers / Lake
Trunk line	Provincial	Shoreline
Primary	City	
Secondary	Municipal	
Tertiary		
Residential		

MISCELLANEOUS INFORMATION
 SOURCES OF INFORMATION: Topographic information taken from NAMRIA Topographic Map at a scale of 1:50,000. Elevation data taken from SRTM 1 arc-second global dataset (2010). Bathymetry information taken from SRTM Oceanographic Curve. Calcium status data gathered through the Soil Health Assessment National Soil Sampling and Testing Project, Phase IV led by the Bureau of Soils and Water Management in partnership with the DA - Regional Field Office (RFO) and Local Government Units (LGUs) in 2019.
 Users noting errors or omissions in this publication are requested to inform the BSWM, SRDC Bldg, Elliptical Rd., cor. Visayas Avenue, Diliman, Quezon City, Philippines or visit the BSWM website (<http://www.bswm.davao.gov.ph>).
 Copyright © 2019. All rights reserved to the Bureau of Soils and Water Management. No part of this publication may be reproduced, stored in a retrieval system or published without written consent from the BSWM.
 Prepared and produced by the GEOMATICS AND SOIL INFORMATION TECHNOLOGY DIVISION, BSWM.

LEGEND				
MAPPING UNIT	DESCRIPTION	Exchangeable Ca, cmol/kg	AREA	
			ha	%
Green	Sufficient	>2.0	12,002	94.37
Red	Deficient	2 and below	716	5.63
TOTAL			12,719	100.00

Area estimated based on field survey, other information from DA-RFO's, MA's, NIA Service Area, NAMRIA Land Cover (2010), and BSWM Land Use System Map