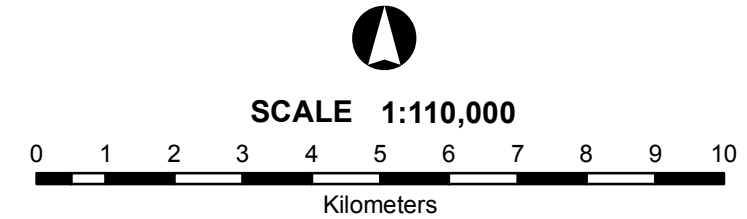
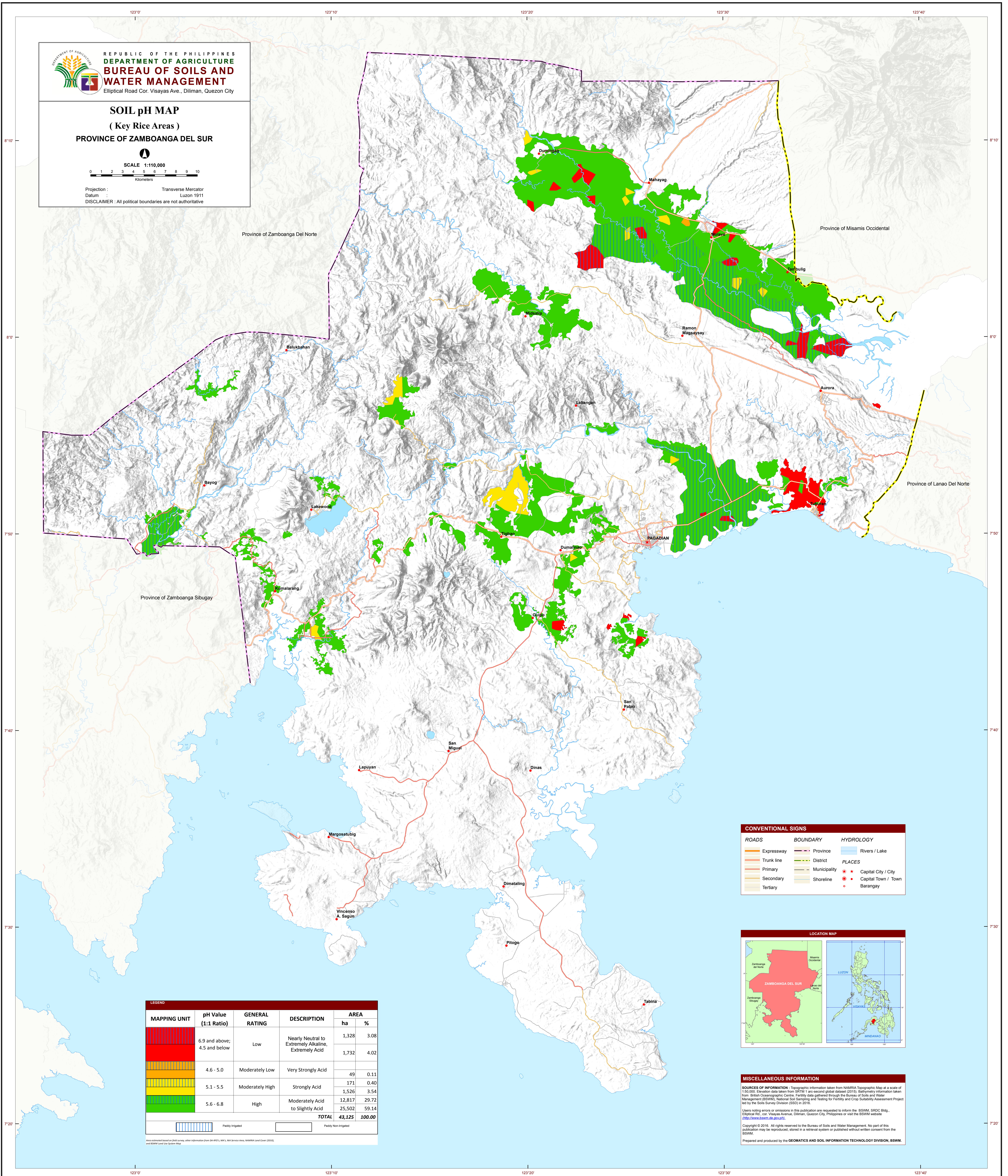


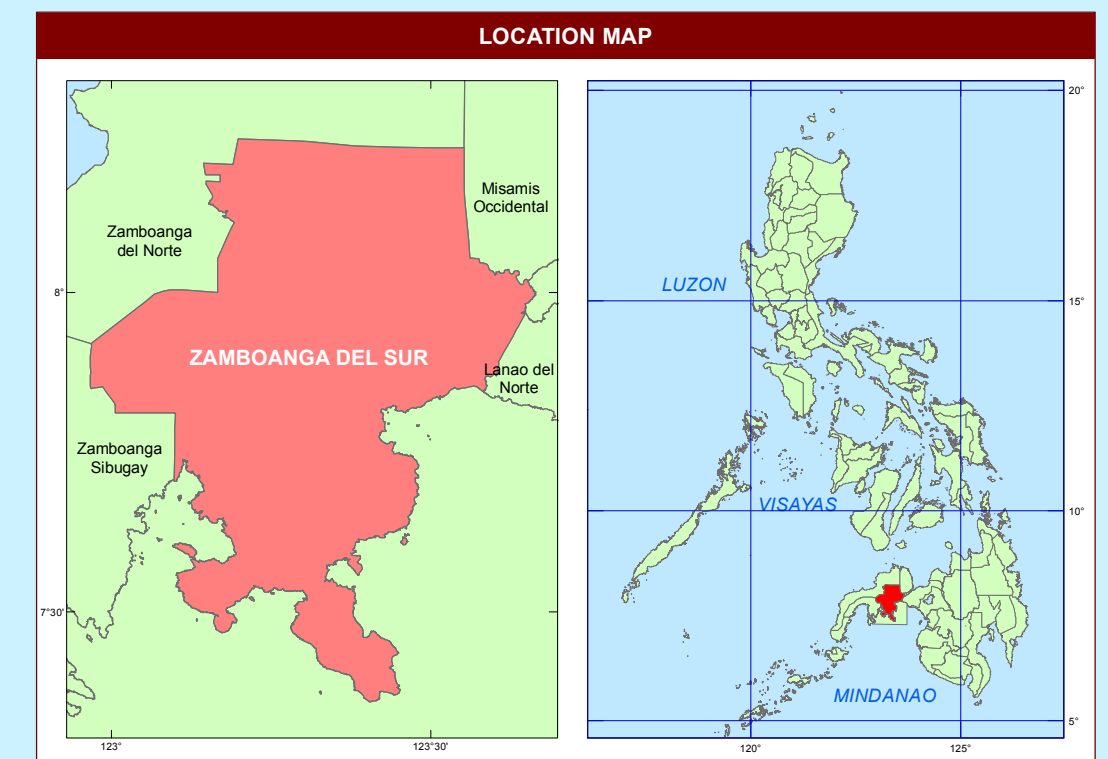
SOIL pH MAP
(Key Rice Areas)
PROVINCE OF ZAMBOANGA DEL SUR



Projection : Transverse Mercator
 Datum : Luzon 1911
 DISCLAIMER : All political boundaries are not authoritative



CONVENTIONAL SIGNS		
ROADS	BOUNDARY	HYDROLOGY
Expressway	Province	Rivers / Lake
Trunk line	District	PLACES
Primary	Municipality	Capital City / City
Secondary	Shoreline	Capital Town / Town
Tertiary		Barangay



LEGEND					
MAPPING UNIT	pH Value (1:1 Ratio)	GENERAL RATING	DESCRIPTION	AREA	
				ha	%
	6.9 and above;	Low	Nearly Neutral to Extremely Alkaline, Extremely Acid	1,328	3.08
	4.5 and below			1,732	4.02
	4.6 - 5.0	Moderately Low	Very Strongly Acid	49	0.11
	5.1 - 5.5	Moderately High	Strongly Acid	171	0.40
	5.6 - 6.8	High	Moderately Acid to Slightly Acid	12,817	29.72
				25,502	59.14
TOTAL				43,125	100.00

Paddy Irrigated
 Paddy Non-Irrigated

MISCELLANEOUS INFORMATION
SOURCES OF INFORMATION - Topographic information taken from NAMRIA Topographic Map at a scale of 1:50,000; Elevation data taken from SRTM 1 arc-second global dataset (2010); Bathymetry information taken from British Oceanographic Centre; Fertility data gathered through the Bureau of Soils and Water Management (BSWM), National Soil Sampling and Testing for Fertility and Crop Suitability Assessment Project led by the Soils Survey Division (SSD) in 2016.
 Users noting errors or omissions in this publication are requested to inform the BSWM SRDC Bldg., Elliptical Rd. cor. Visayas Avenue, Diliman, Quezon City, Philippines or visit the BSWM website (<http://www.bswm.de.gov.ph>).
 Copyright © 2016. All rights reserved to the Bureau of Soils and Water Management. No part of this publication may be reproduced, stored in a retrieval system or published without written consent from the BSWM.
 Prepared and produced by the GEOMATICS AND SOIL INFORMATION TECHNOLOGY DIVISION, BSWM.