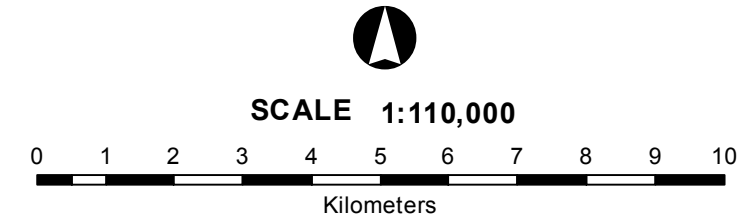
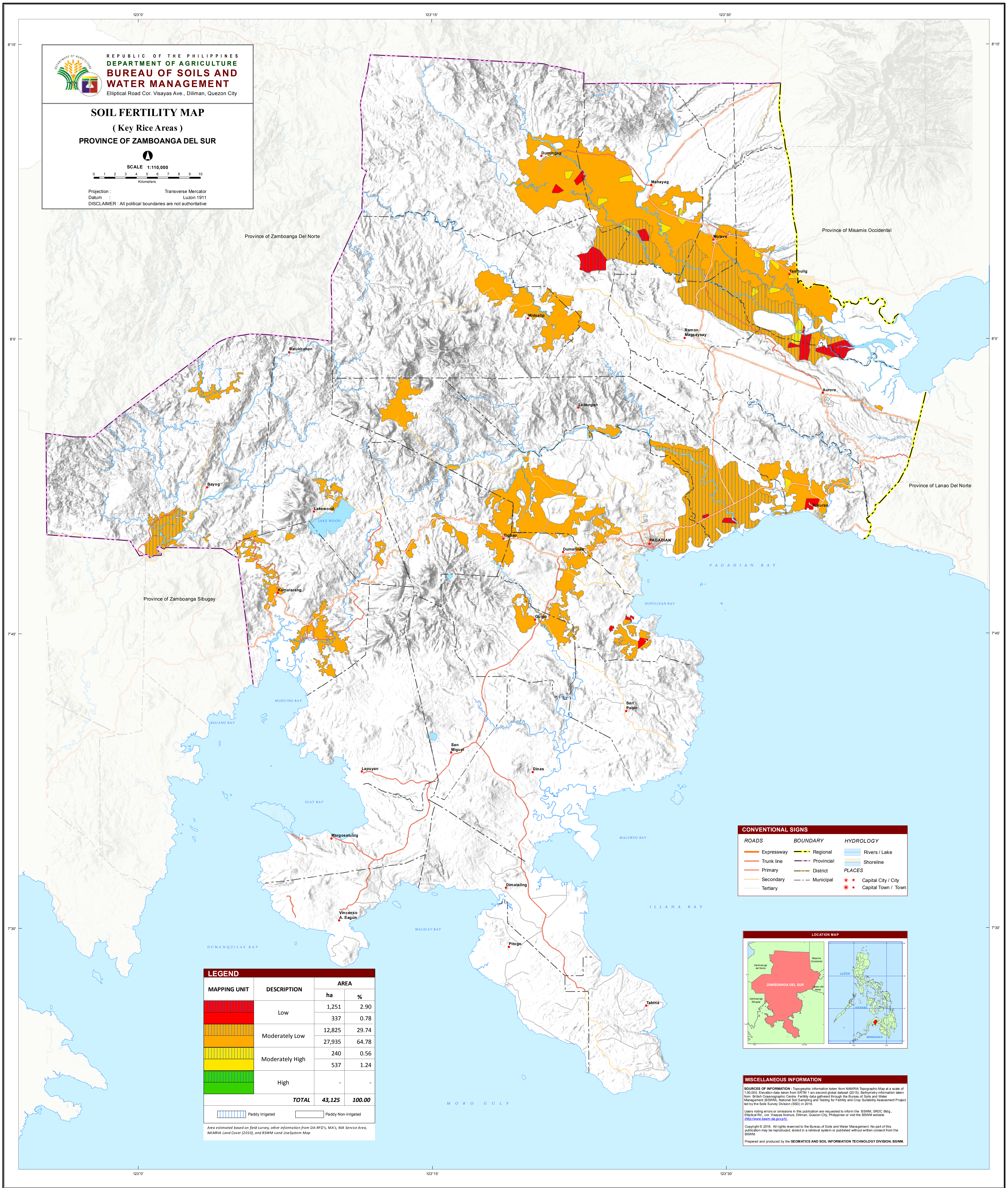


REPUBLIC OF THE PHILIPPINES
DEPARTMENT OF AGRICULTURE
BUREAU OF SOILS AND
WATER MANAGEMENT
 Elliptical Road Cor. Visayas Ave., Diliman, Quezon City

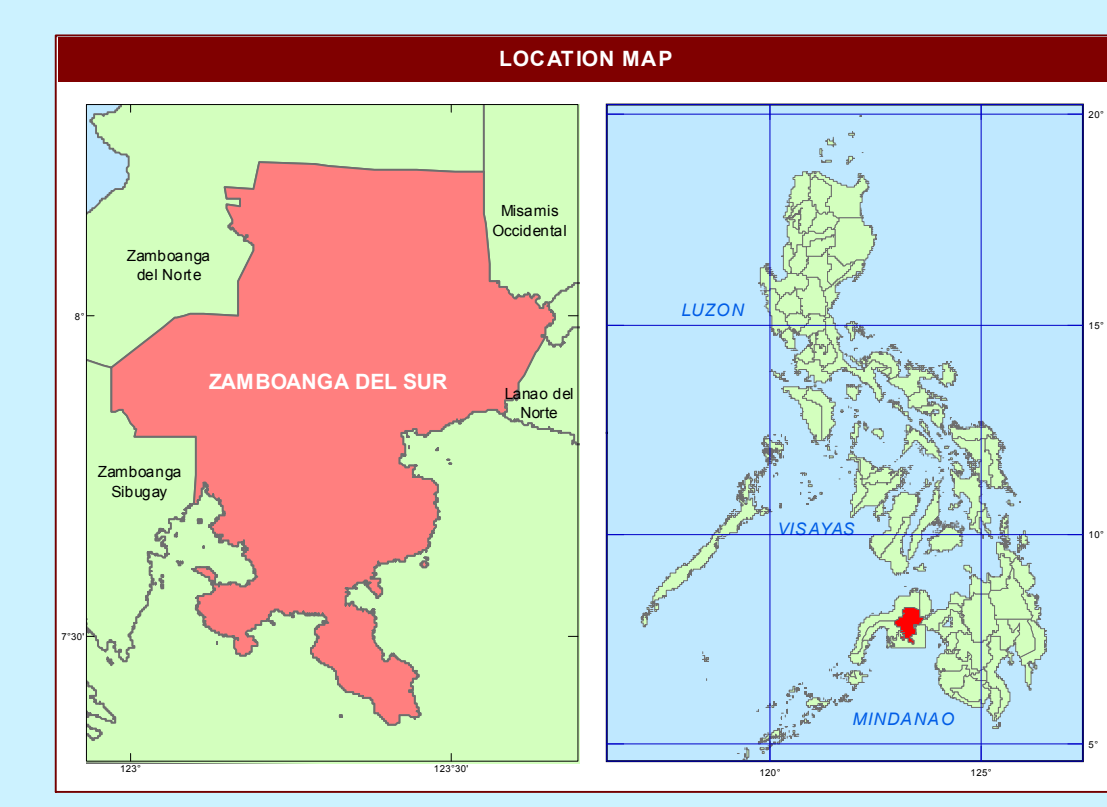
SOIL FERTILITY MAP
 (Key Rice Areas)
 PROVINCE OF ZAMBOANGA DEL SUR



Projection : Transverse Mercator
 Datum : Luzon 1911
 DISCLAIMER: All political boundaries are not authoritative



CONVENTIONAL SIGNS		
ROADS	BOUNDARY	HYDROLOGY
Expressway	Regional	Rivers / Lake
Trunk line	Provincial	Shoreline
Primary	District	PLACES
Secondary	Municipal	Capital City / City
Tertiary		Capital Town / Town



LEGEND			
MAPPING UNIT	DESCRIPTION	AREA	
		ha	%
Low	[Red]	1,251	2.90
		337	0.78
Moderately Low	[Orange]	12,825	29.74
		27,935	64.78
Moderately High	[Yellow]	240	0.56
		537	1.24
High	[Green]	-	-
TOTAL		43,125	100.00

[Blue hatched] Paddy Irrigated [White] Paddy Non-Irrigated
 Area estimated based on field survey, other information from DA-RDO's, MA's, NIA Service Area, NAMRIA Land Cover (2010), and BSWM Land Use System Map

MISCELLANEOUS INFORMATION
 SOURCES OF INFORMATION: Topographic information taken from NAMRIA Topographic Map at a scale of 1:50,000; Elevation data taken from SRTM 1-arc-second global dataset (2010); Bathymetry information taken from British Oceanographic Centre; Fertility data gathered through the Bureau of Soils and Water Management (BSWM) National Soil Sampling and Testing for Fertility and Crop Sustainability Assessment Project led by the Soils Survey Division (SSD) in 2016.
 Users noting errors or omissions in this publication are requested to inform the BSWM, SRDC Bldg., Elliptical Rd., cor. Visayas Avenue, Diliman, Quezon City, Philippines or visit the BSWM website (<http://www.bswm.da.gov.ph>).
 Copyright © 2016. All rights reserved to the Bureau of Soils and Water Management. No part of this publication may be reproduced, stored in a retrieval system or published without written consent from the BSWM.
 Prepared and produced by the GEOMATICS AND SOIL INFORMATION TECHNOLOGY DIVISION, BSWM.