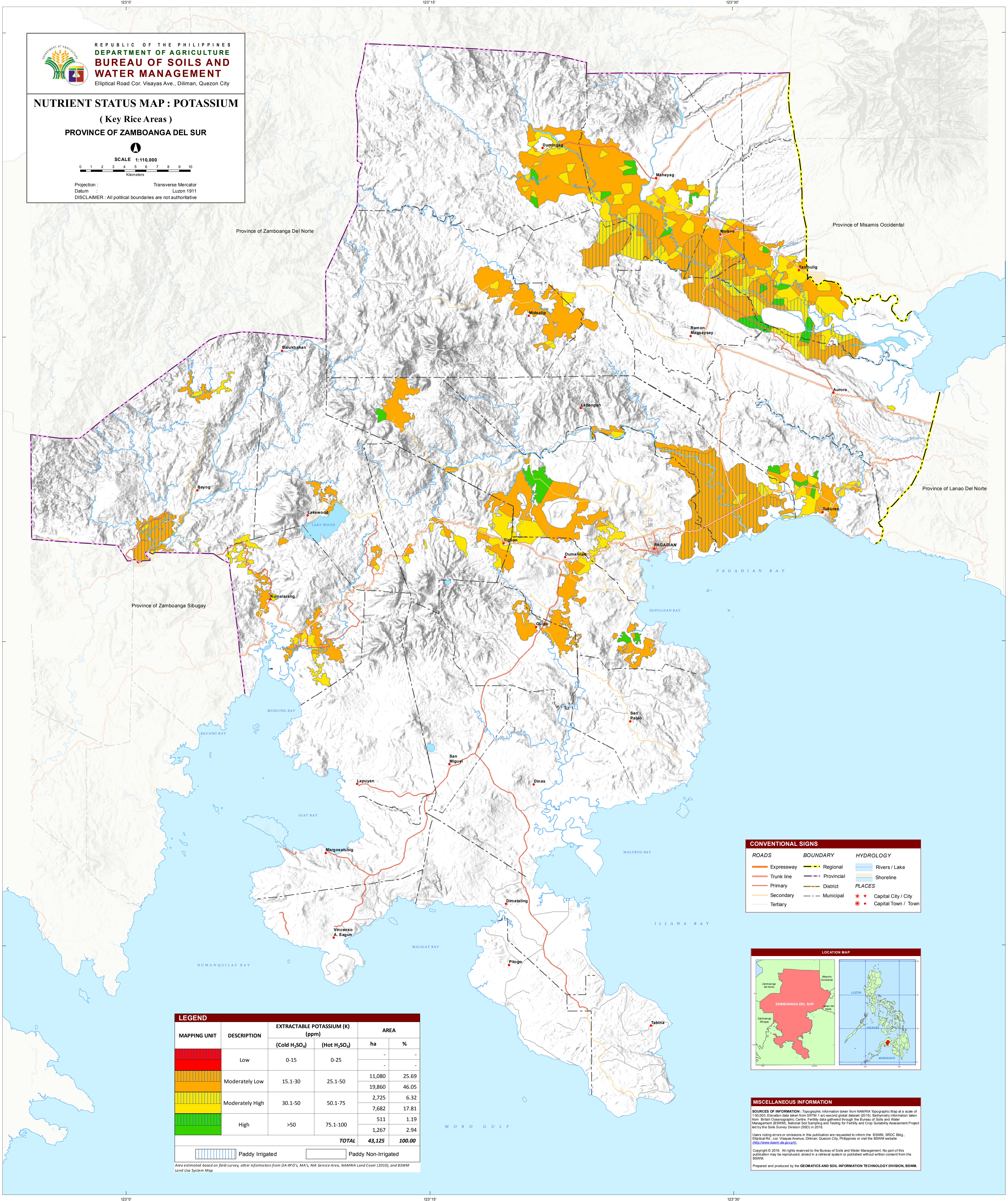

REPUBLIC OF THE PHILIPPINES
DEPARTMENT OF AGRICULTURE
BUREAU OF SOILS AND WATER MANAGEMENT
 Elliptical Road Cor. Visayas Ave., Diliman, Quezon City

NUTRIENT STATUS MAP : POTASSIUM
(Key Rice Areas)
PROVINCE OF ZAMBOANGA DEL SUR

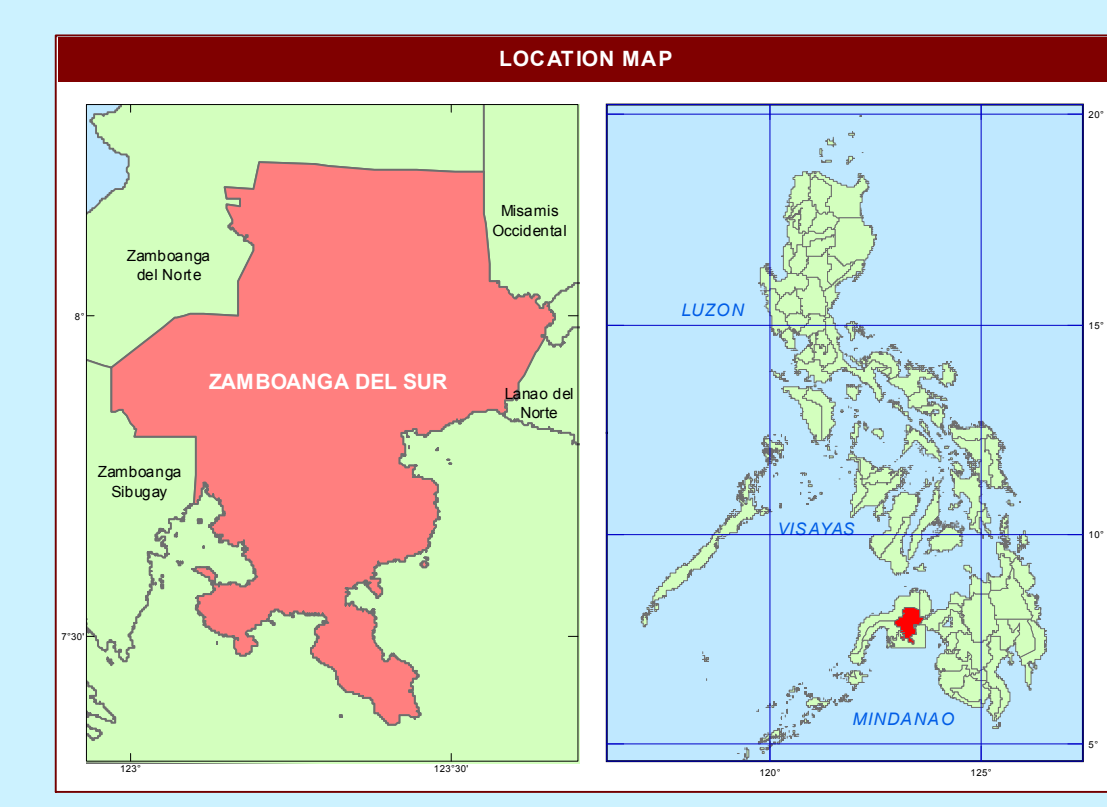
SCALE 1:110,000
 0 1 2 3 4 5 6 7 8 9 10
 Kilometers

Projection : Transverse Mercator
 Datum : Luzon 1911
 DISCLAIMER : All political boundaries are not authoritative



CONVENTIONAL SIGNS

ROADS	BOUNDARY	HYDROLOGY
Expressway	Regional	Rivers / Lake
Trunk line	Provincial	Shoreline
Primary	District	PLACES
Secondary	Municipal	★ Capital City / City
Tertiary		● Capital Town / Town



LEGEND

MAPPING UNIT	DESCRIPTION	EXTRACTABLE POTASSIUM (K)		AREA	
		(Cold H ₂ SO ₄)	(Hot H ₂ SO ₄)	ha	%
	Low	0-15	0-25	-	-
	Moderately Low	15.1-30	25.1-50	11,080	25.69
				19,860	46.05
	Moderately High	30.1-50	50.1-75	2,725	6.32
				7,682	17.81
	High	>50	75.1-100	511	1.19
				1,267	2.94
TOTAL				43,125	100.00

Paddy Irrigated Paddy Non-Irrigated

Area estimated based on field survey, other information from DA-RFO's, MA's, NIA Service Area, NAMRIA Land Cover (2010), and BSWM Land Use System Map

MISCELLANEOUS INFORMATION

SOURCES OF INFORMATION - Topographic information taken from NAMRIA Topographic Map at a scale of 1:50,000; Elevation data taken from SRTM 1-arc-second global dataset (2010); Bathymetry information taken from British Oceanographic Centre; Fertility data gathered through the Bureau of Soils and Water Management (BSWM) National Soil Sampling and Testing for Fertility and Crop Sustainability Assessment Project led by the Soils Survey Division (SSD) in 2016.

Users noting errors or omissions in this publication are requested to inform the BSWM, SRDC Bldg., Elliptical Rd., Cor. Visayas Avenue, Diliman, Quezon City, Philippines or visit the BSWM website (<http://www.bswm.da.gov.ph>).

Copyright © 2016. All rights reserved to the Bureau of Soils and Water Management. No part of this publication may be reproduced, stored in a retrieval system or published without written consent from the BSWM.

Prepared and produced by the **GEOMATICS AND SOIL INFORMATION TECHNOLOGY DIVISION, BSWM.**