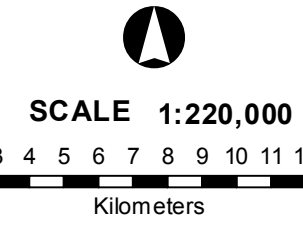


RICE SUITABILITY MAP
(Key Rice Areas)

PROVINCE OF ZAMBOANGA DEL NORTE

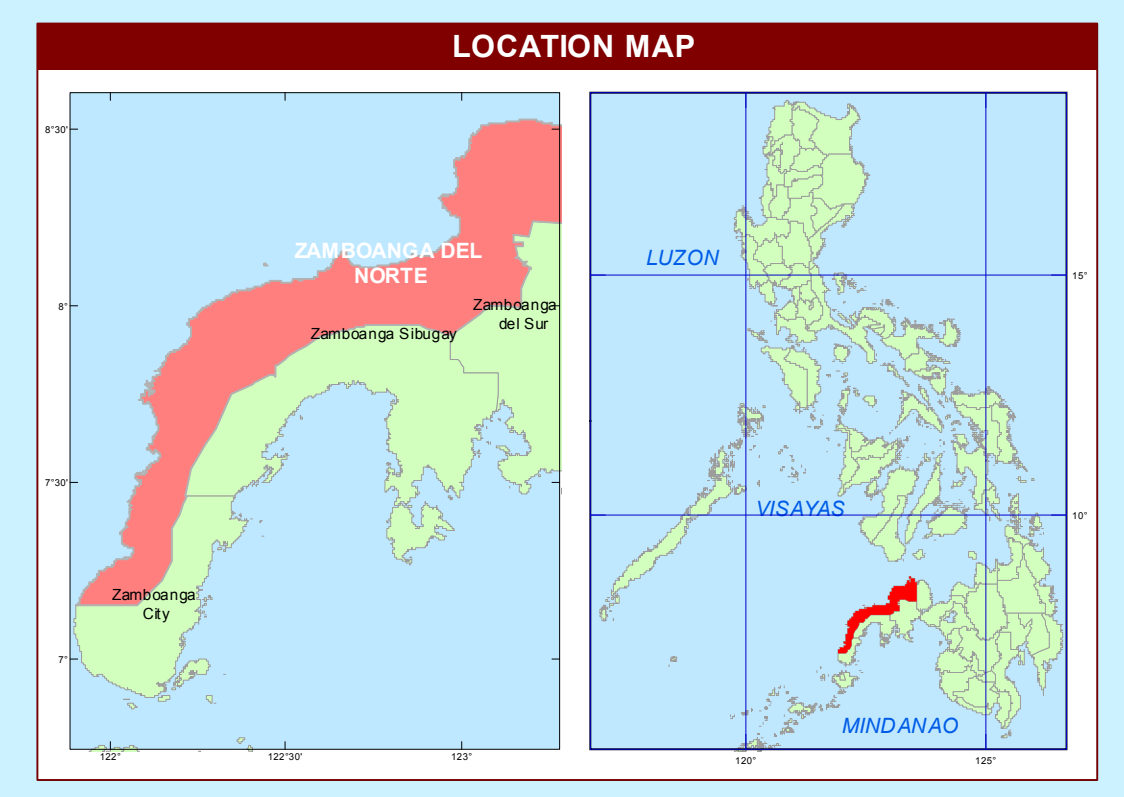


Projection : Transverse Mercator
 Datum : Luzon 1911
 DISCLAIMER : All political boundaries are not authoritative

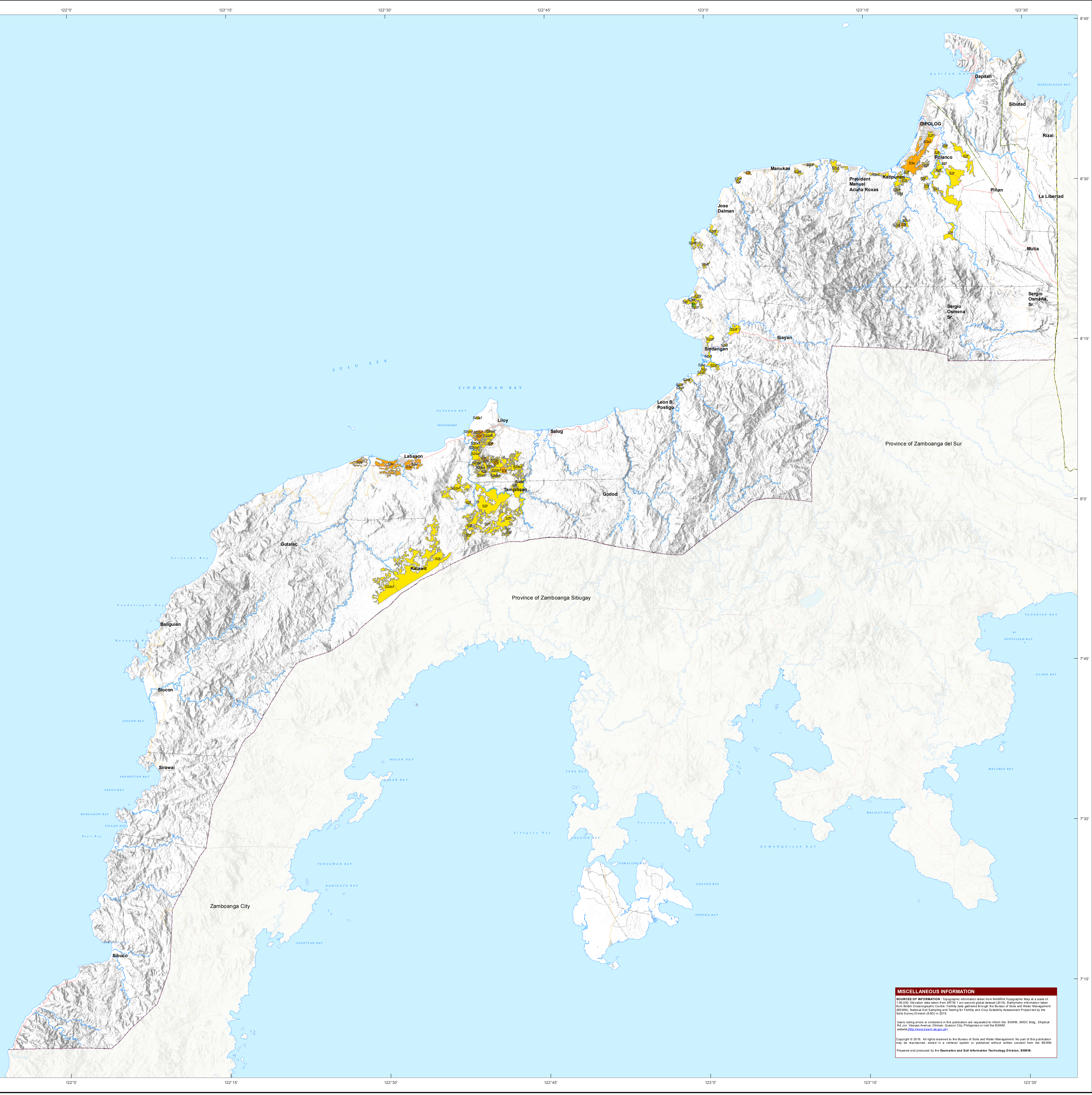
SUITABILITY RATING	DESCRIPTION	LIMITING FACTORS			AREA	
		Moderate	Marginal	Severe	ha	%
S1	Highly Suitable	-	-	-	24	0.12
S2hf	Moderately Suitable	d, f	-	-	1,299	6.73
S2hx		d, x	-	-	36	0.19
S2hxf		d, x, f	-	-	4,205	21.78
S2f		f	-	-	10,174	52.70
S2hif	Marginally Suitable	i, d	-	-	22	0.11
S2hif		i, d, f	-	-	26	0.13
S2hif		i, d, x, f	-	-	25	0.13
S2f		i, f	-	-	14	0.07
S2x	Marginally Suitable	x	-	-	17	0.09
S2xf		x, f	-	-	746	3.86
S3f		x, f	f	-	51	0.26
S3f		d	f	-	55	0.28
S3f	Marginally Suitable	d, x	f	-	451	2.34
S3x		d, f	x	-	1,979	10.25
S3xf		d	x, f	-	180	0.93
TOTAL					19,304	100.00

Note:
 Highly Suitable (S1) - with none to slight limitations for any given use. Slight limitations will not significantly reduce productivity or benefit from extra inputs above an acceptable level.
 Moderately Suitable (S2) - with limitations which are moderately severe for sustained application for a given use. Limitations will moderately reduce productivity or benefits. Requires increased input to the extent that the overall advantage to be gained will be inferior to that expected on S1 land.
 Marginally Suitable (S3) - with limitations which are severe for sustained application of a given use and will significantly reduce productivity or benefits. Limitations will significantly increase required inputs, that this expenditure will only be marginally justified.
 Not Suitable (N) - with severe limitations which are difficult to overcome in time or cannot be corrected or corrected at acceptable cost. Limitations are so severe that prevent successful sustained use of the land in the given manner.

LIMITING FACTORS	RATING ARRANGED IN INCREASING SEVERITY OF LIMITATION			
	Highly Suitable (S1)	Moderately Suitable (S2)	Marginally Suitable (S3)	Not Suitable (N)
Water Availability m - no dry months (20mm) f - annual average rainfall (mm)	0 - 3 > 1500	4 - 6 1200 - 1500	7 - 9 800 - 1200	> 9 < 800
Temperature Regime t - annual average temperature (°C)	25 - 29	30 - 32 22 - 24	33 - 35 18 - 21	> 35 ≤ 18
Terrain s - slope (%) st - stoniness e - erosion f - flooding	0 - 3 none none - slight	3 - 8 slight slight - moderate	8 - 18 moderate moderate - severe	> 18 severe severe
Rooting Conditions d - soil drainage class x - soil texture	VPO - SPD C, SC, SIC CL, SCL SCL	SPD - MW0	W0	SD - ID
Nutrient Availability f - soil fertility	Moderately High to high (MGH)	Moderately low (ML)	Low (L)	-



ROADS		BOUNDARY		HYDROLOGY	
Expressway	Regional	Provincial	Rivers / Lake	Rivers / Lake	Shoreline
Trunk line	District	Municipal	Capital City / City	Capital Town / Town	
Primary					
Secondary					
Tertiary					



MISCELLANEOUS INFORMATION
SOURCES OF INFORMATION: Topographic information from MABIA Topographic Map at a scale of 1:50,000. Elevation data taken from SRTM30+ as a secondary data source (2010). Background information from GISWI, National Soil Sampling and Testing for Fertility and Crop Suitability Assessment Project led by the Soils Survey Division (SSD) in 2010.
 Users who refer or cite in this publication are requested to inform the BSWM, SSCD Bldg., Elliptical Rd. cor. Visayas Avenue, Diliman, Quezon City, Philippines or visit the BSWM website: www.bswm.gov.ph
 Copyright © 2018. All rights reserved by the Bureau of Soils and Water Management. No part of this publication may be reproduced, stored in a retrieval system or published without written consent from the BSWM.
 Prepared and produced by the Geomatics and Soil Information Technology Division, BSWM.