

LAND SUITABILITY MAP

NATURAL RUBBER

**LAND RESOURCES EVALUATION AND SUITABILITY
ASSESSMENT OF STRATEGIC PRODUCTION AREAS**

PROVINCE OF ZAMBOANGA SIBUGAY

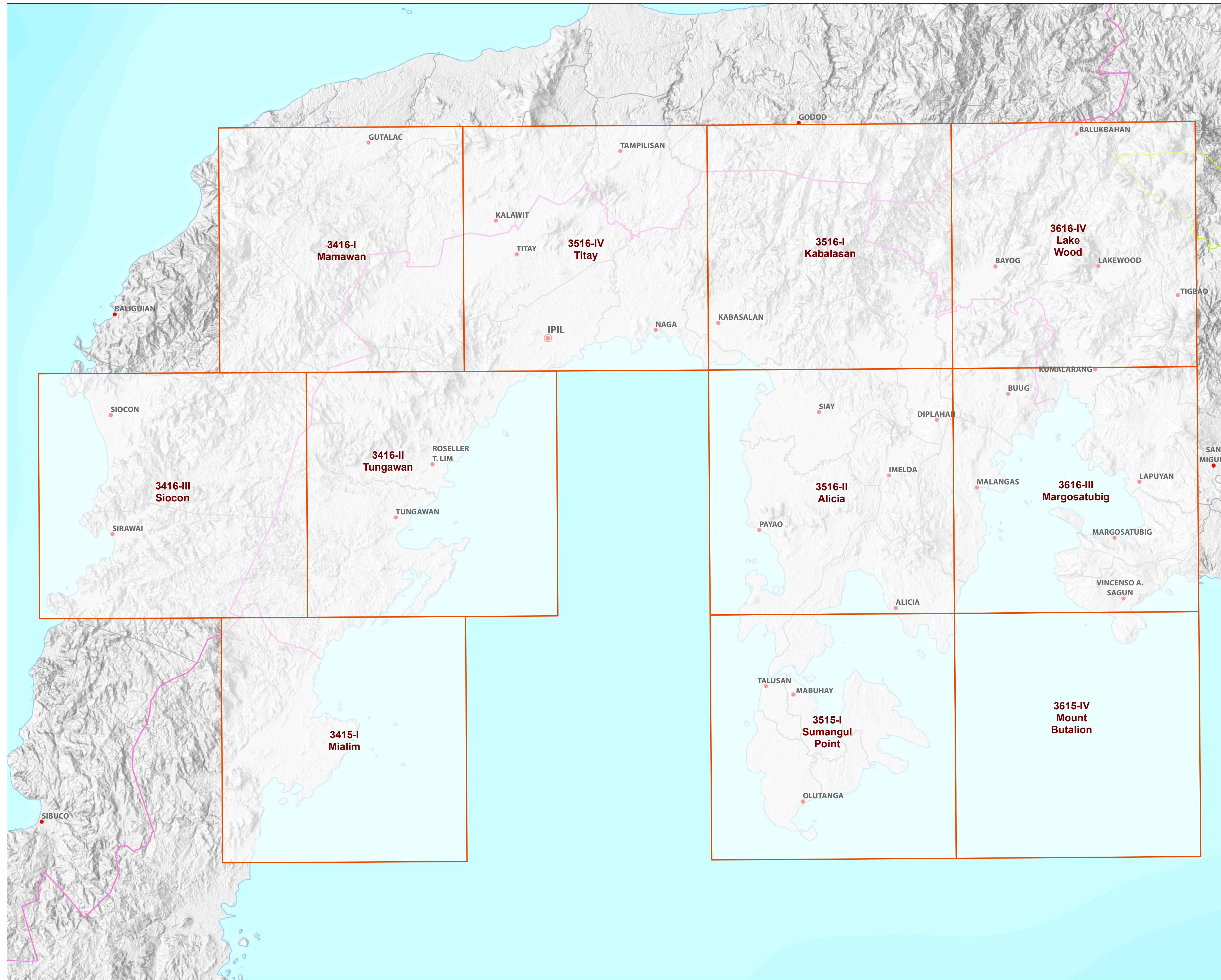


REPUBLIC OF THE PHILIPPINES
DEPARTMENT OF AGRICULTURE
BUREAU OF SOILS AND WATER MANAGEMENT

SRDC Bldg., Elliptical Road Cor. Visayas Avenue, Diliman, Quezon City 1101
Tel/Fax No.: (+632) 332-9534 E-mail: bswmclientcenter@yahoo.com

MAP INDEX

LAND RESOURCES EVALUATION AND SUITABILITY ASSESSMENT OF STRATEGIC PRODUCTION AREAS PROVINCE OF ZAMBOANGA SIBUGAY



LEGEND

Places

- ★ Capital City
- ★ City
- Capital Town
- Town

Administrative Boundary

- Regional
- Provincial
- City
- Municipal

Map Index

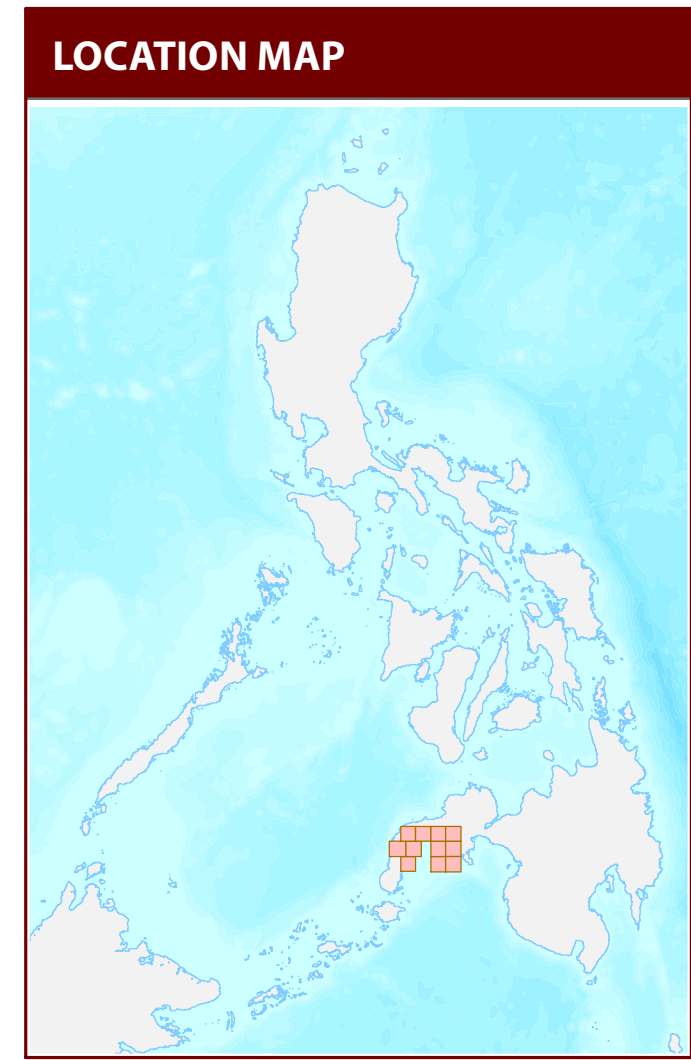
- Index grid

Topographic Relief

- (Shaded relief symbol)

Bathymetry

- (Blue color swatch)



MISCELLANEOUS INFORMATION

Land suitability information produced by the Bureau of Soils and Water Management (BSWM) through the Land Resources Evaluation and Suitability Assessment of Strategic Production Areas for Major Commodities Project supported by the Philippine Council on Agriculture and Fisheries (PCAF) and funded by the Bureau of Agricultural Research (BAR).

Map produced by the Geomatics and Soil Information Technology Division, Bureau of Soils and Water Management (BSWM).

Users noting errors or omissions in this publication are requested to inform the Bureau of Soils and Water Management.

Unless otherwise noted, copyright and any other intellectual property rights is owned by the Philippine Government.

CC BY NC SA

REPUBLIC OF THE PHILIPPINES
DEPARTMENT OF AGRICULTURE
BUREAU OF SOILS AND WATER MANAGEMENT

SRDC Bldg., Elliptical Road Cor. Visayas Avenue,
 Diliman, Quezon City 1101 Philippines
 Tel/Fax No. +(632) 332-9534 E-mail: bswmclientcenter@yahoo.com

LAND SUITABILITY MAP FOR RUBBER

LAND RESOURCES EVALUATION AND SUITABILITY ASSESSMENT OF STRATEGIC PRODUCTION AREAS ZAMBOANGA SIBUGAY, REGION IX

EXTENT OF SUITABILITY FOR RUBBER PRODUCTION BY MUNICIPALITY

MUNICIPALITY	EXISTING RUBBER (Ha)			TOTAL EXISTING AREA (Ha)	EXPANSION AREA (Ha)						CONFLICT RESOLUTION AREA (Ha)						TOTAL POTENTIAL EXPANSION AREA (Ha)
	S1	S2	S3		Coconut		Shrubland, unmanaged*		Grassland, unmanaged*		Corn		Paddy rice, non-irrigated		Other crops		
					S1	S2	S1	S2	S1	S2	S1	S2	S1	S2	S1	S2	
ALICIA	-	-	-	-	1,399	4,546	66	356	300	85	778	1,535	-	-	-	-	9,067
BUUG	-	-	4	4	830	3,216	57	632	20	203	564	448	-	-	1	1	5,973
DIPLAHAN	-	-	-	-	186	664	74	363	11	304	1,366	482	-	-	3	-	3,453
IMELDA	-	-	-	-	315	2,694	8	65	51	174	428	261	-	-	1	-	3,997
IPIL	537	375	49	961	2,801	2,596	259	78	41	390	2,030	674	-	-	-	4	8,873
KABASALAN	63	459	753	1,275	1,131	2,642	3	349	7	34	448	391	-	-	-	-	5,004
MABUHAY	-	-	-	-	423	2,823	-	79	-	467	302	1,781	-	-	-	-	5,875
MALANGAS	-	-	-	-	1,909	3,925	32	78	22	123	928	711	-	-	2	1	7,730
NAGA	671	455	125	1,252	2,075	4,286	24	17	20	78	484	435	-	-	-	-	7,418
OLUTANGA	-	-	-	-	131	3,080	-	78	-	26	9	1,510	-	-	-	-	4,835
PAYAO	-	-	-	-	1,113	5,550	150	427	7	849	1,125	1,451	-	-	22	35	10,729
ROSELLER LIM	5	10	63	77	838	4,893	58	69	179	936	954	1,220	-	-	-	-	9,148
SIAY	33	228	201	462	375	2,891	143	447	80	-	2,105	489	-	-	-	-	6,529
TALJUAN	-	5	-	5	151	1,813	18	122	-	178	132	1,689	-	-	-	1	4,104
TITAY	1,002	1,510	564	3,075	4,275	7,481	102	25	118	3,993	1,262	887	-	-	-	-	18,143
TUNGAWAN	7	14	36	57	2,800	6,747	67	304	1,659	7,959	1,211	1,620	-	-	-	-	22,368
TOTAL	2,318	3,057	1,793	7,168	20,752	59,847	1,062	3,488	2,516	15,798	14,125	15,585	-	-	30	42	133,246

Note: Delivery of rubber planting materials must be started on the onset of rainy season.
*establishment of shade trees prior to planting of rubber.

AGRONOMIC REQUIREMENT OF RUBBER PRODUCTION

LAND UTILIZATION TYPE	SUITABILITY RATING	SLOPE (%)	SOIL DEPTH (cm)	SOIL TEXTURE	SOIL DRAINAGE	SOIL REACTION (pH)	INHERENT FERTILITY	FLOODING CLASS	EROSION CLASS	ROCK OUTCROPS	ELEVATION (masl)	ANNUAL RAINFALL (mm)	CLIMATIC TYPE
Rubber Tree	S1	<8	>100	CL, SiCL, SCL, SC, SIC, C, HC	WD, MWD, SPD	5.6 - 7.2	high	none-slight	none-slight	none-few	<500	1000-2000	III, IV
	S2	8 - 30	30 - 100	FSL, L, SIL, SL	PD, VPD	4.5 - 5.5 7.3 - 7.8	medium	moderate	moderate	common	500-1000	2001-4500	I, II, III
	S3	>30	<30	S, LS, CSL	ED	<4.5 - > 7.9	low	severe	severe	many	>1000	<1000 >4500	

SLOPE (%)
0 - 3 - level to gently sloping
3 - 8 - gently sloping to undulating
8 - 18 - undulating to rolling
18 - 30 - rolling to moderately steep
30 - 50 - steep
> 50 - very steep

SOIL DRAINAGE
ED - excessively drained
WD - well drained
MWD - moderately well drained
SPD - somewhat poorly drained
PD - poorly drained
VPD - very poorly drained

SOIL REACTION (pH)
< 4.5 - extremely acid
4.5 - 5.0 - very strongly acid
5.1 - 5.5 - strongly acid
5.6 - 6.0 - medium acid
6.1 - 6.5 - slightly acid
6.6 - 7.2 - neutral
7.3 - 7.8 - mildly alkaline
7.9 - 8.4 - moderately alkaline
> 8.5 - strongly alkaline

SOIL TEXTURE
Coarse
S - sand
LS - loamy sand
CSL - coarse sandy loam
SL - sandy loam
Medium
FSL - fine sandy loam
L - loam
SIL - silt loam
CL - clay loam
SICL - silty clay loam
SCL - sandy clay loam

Fine
SC - sandy clay
SiC - silty clay
C - clay
HC - heavy clay

SOIL DEPTH (cm)
0 - 30 - very shallow
30 - 50 - shallow
50 - 100 - moderately deep
> 100 - deep to very deep

SURFACE IMPEDIMENT
ROCK OUTCROPS
< 10% - none - few
10 - 30% - common
> 30% - many

LAND LIMITATIONS DESCRIPTION AND COMBINATIONS

ELEVATION
E12 - 500 - 1000m or 2000 - 2500m
E13 - < 500m or > 2500m

SOIL DRAINAGE
D2 - Somewhat poorly drained to poorly drained
D3 - Very poorly drained or excessively drained

SOIL DEPTH
Sh2 - Shallow to moderately deep (30 - 100cm)
Sh3 - Very shallow (<30cm)

SOIL EROSION
E2 - Moderate erosion
E3 - Severe erosion

SLOPE/TOPOGRAPHY
T2 - Undulating to moderately steep
T3 - Steep to very steep

SOIL TEXTURE
Tc - Coarse texture

ROCK OUTCROPS
Rc2 - Common
Rc3 - Many

FLOODING
F2 - Moderate seasonal flooding
F3 - Severe seasonal flooding

CODE	LIMITATION	CODE	LIMITATION	CODE	LIMITATION	CODE	LIMITATION
1	E12	11	T2-E3-Sh2-Rc3	21	T3-E3-Rc2	31	T3-E3-Rc3
2	F2-D2	12	T2-E12	22	T3-E3-Sh2-Rc3	32	T3-E3-Sh3-Rc3
3	F3-D2	13	T2-E12-E3	23	T3-E3-Sh3-Rc2	33	T3-E12-E3
4	Sh2-Rc2	14	T2-E12-E3-Sh2-Rc2	24	T3-E3-Sh3-Rc3	34	T3-E12-E3-Sh3-Rc3
5	T2	15	T2-E12-E3-Sh2-Rc3	25	T3-E12	35	T3-E13
6	T2-E2-Sh2-Rc2	16	T2-E12-Sh2-Rc2	26	T3-E12-E3		
7	T2-E3	17	T2-E12-Sh2-Rc3	27	T3-E12-E3-Sh3-Rc2		
8	T2-E3-Rc2	18	T2-F2-D2	28	T3-E12-E3-Sh3-Rc3		
9	T2-E3-Rc3	19	T3	29	T3		
10	T2-E3-Sh2-Rc2	20	T3-E3	30	T3-E3		

CODE	LANDUSE	CODE	LANDUSE
4	Corn	137	Rubber
81	Coffee	139	Falcatia
82	Cacao		
85	Mango		
91	Banana		
105	Fruit trees, mixed		
115	Mixed crops		
116	Coconut		
126	Grassland		
134	Shrubs, unmanaged		

SUITABILITY CLASSES:

Highly Suitable (S1)
Land having no significant limitation to sustained application of a given use, or only minor limitations that will not significantly reduce productivity or benefits and will not raise inputs above an acceptable level.

Marginally Suitable (S3)
Land having limitations which in aggregate are severe for sustained application of a given use and will so reduce productivity or benefits, or increase required inputs, that this expenditure will be only marginally justified.

Moderately Suitable (S2)
Land having limitation which in aggregate are moderately severe for sustained application of a given use; the limitation will reduce productivity or benefits and increase required inputs to the extent that the overall advantage to be gained from the use, although still attractive, will be appreciably inferior to that expected on class S1 land.

Not Suitable / Not Relevant
Land having limitations which may be surmountable in time but which cannot be corrected with existing knowledge at currently acceptable cost; the limitations are so severe as to preclude successful sustained use of the land in the given manner. Existing forest, shrubland greater than 18% slope, irrigated paddy rice and miscellaneous land types such as built up areas, roads, etc are considered as not relevant.

CLIMATE TYPE

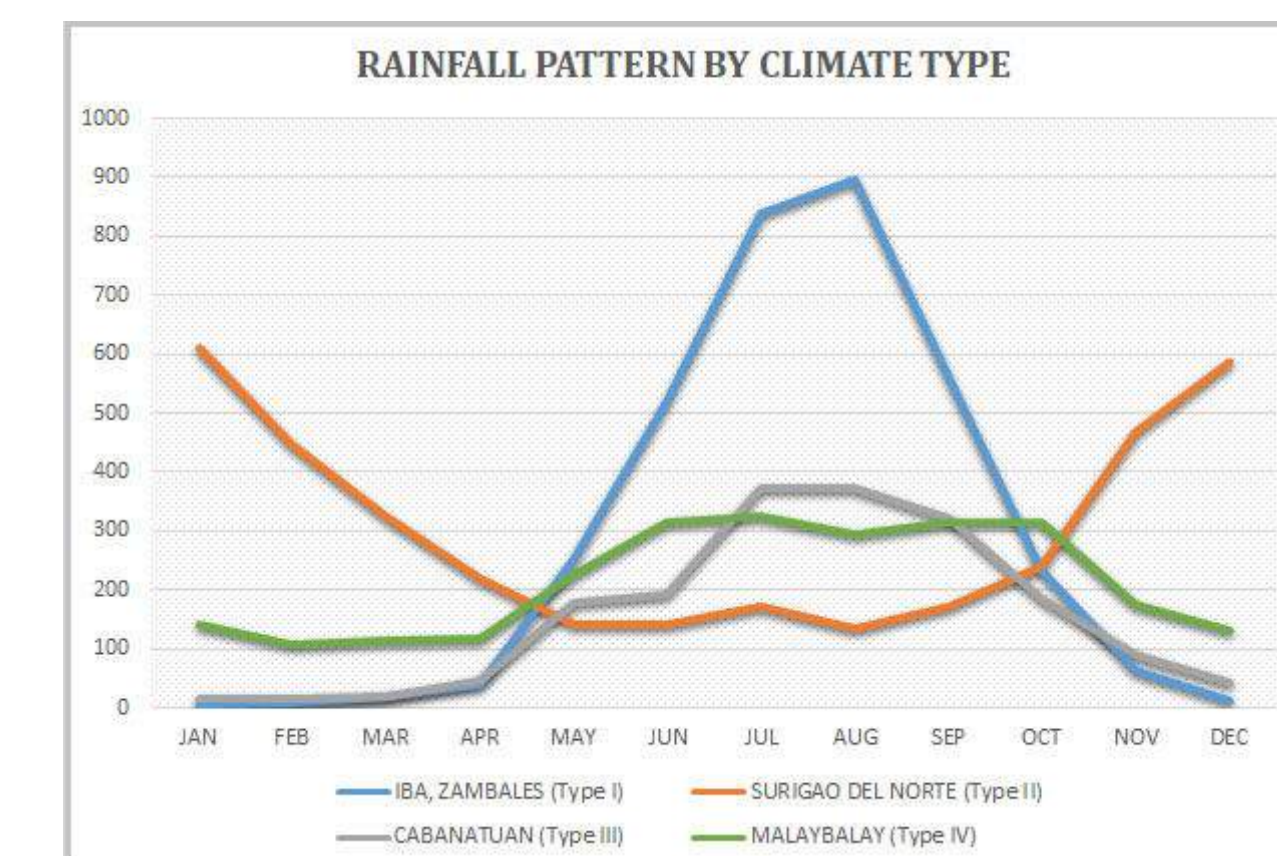
TYPE I : Two pronounced season, dry from November to April and wet during the rest of the year. Maximum rain period is from June to September

TYPE II : No dry season with a very pronounced maximum rain period from December to February. There is not a single dry month. Maximum monthly rainfall occurs during the period from March to May.

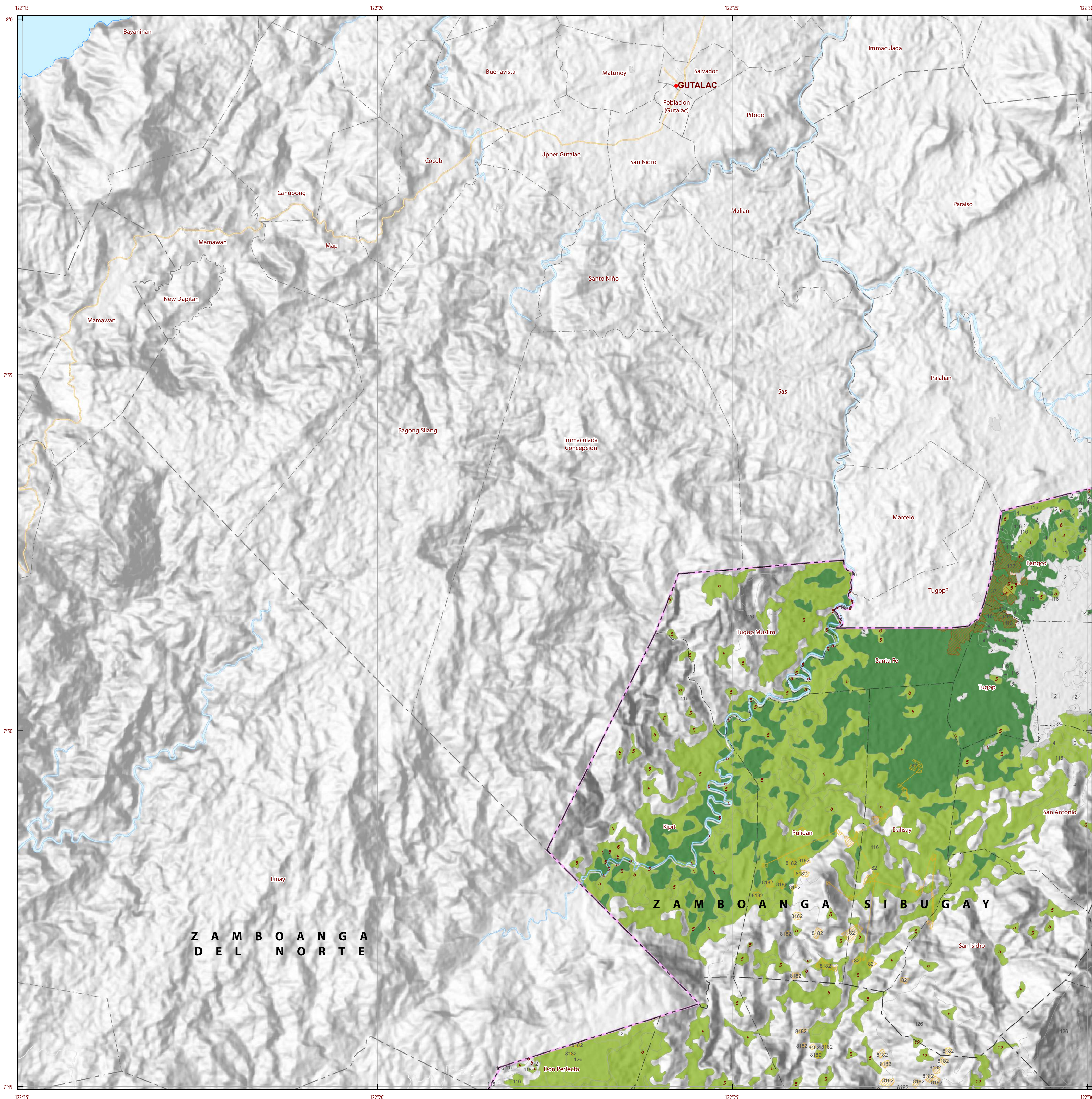
TYPE III : No very pronounced maximum rain period, with a dry season lasting only from one to three months, either during the period from December to February or from March to May. This type resembles Type I since it has a short dry season.

TYPE IV : Rainfall is more or less evenly distributed throughout the year. This type resembles Type II since it has no dry season.

Western part of Zamboanga Sibugay is classified as climatic Type III and Eastern part is Type IV.

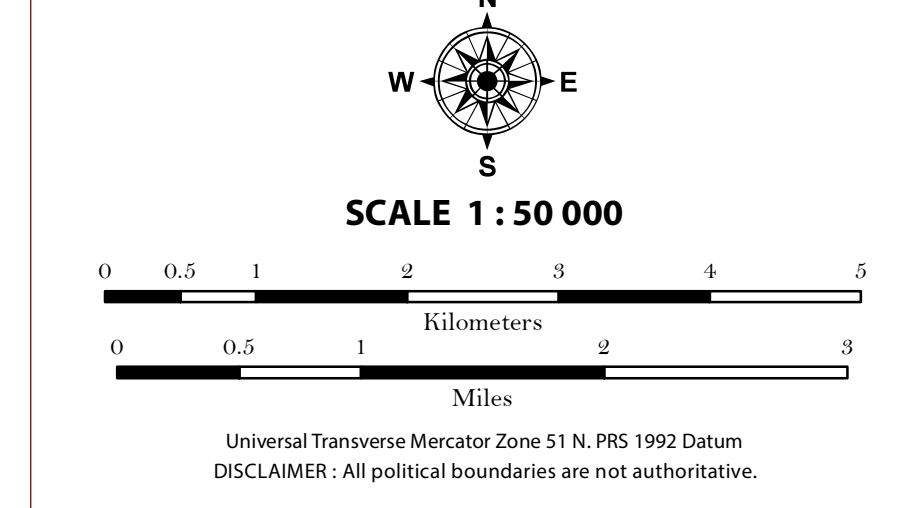


Source: PAGASA 2018, *Climatological Normals (Rainfall)*, Philippine Atmospheric, Geophysical and Astronomical Services Administration (PAGASA), accessed 27 July 2018, <<https://www1.pagasa.dost.gov.ph/index.php/climate/climatological-normals>>.



LAND SUITABILITY MAP RUBBER

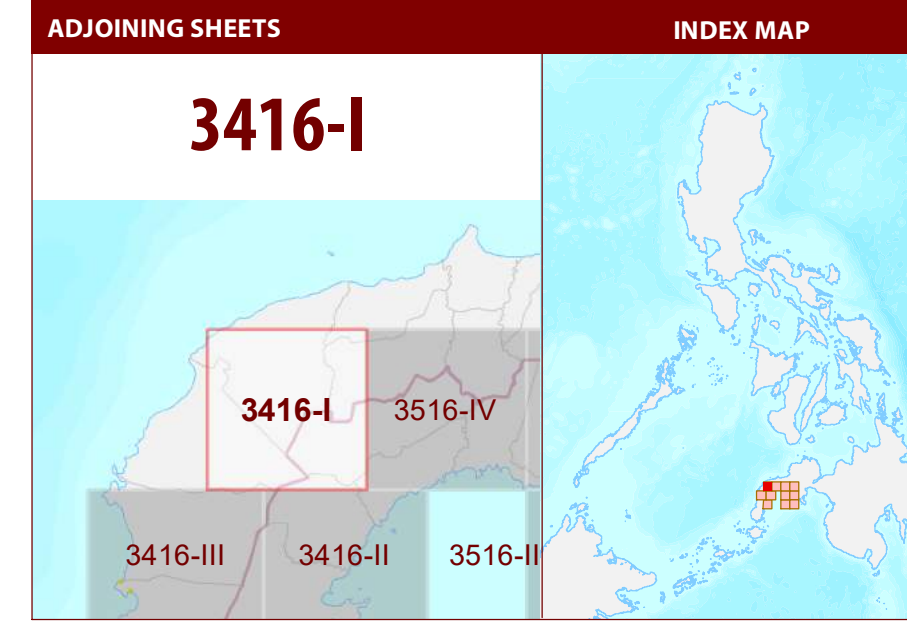
LAND RESOURCES EVALUATION AND SUITABILITY ASSESSMENT OF STRATEGIC PRODUCTION AREAS



LEGEND

- SUITABILITY CLASSES**
- S1 Highly Suitable** - Land having no significant limitations to sustained application of a given use, or only minor limitations that will not significantly reduce productivity or benefits and will not raise inputs above an acceptable level.
 - S2 Moderately Suitable** - Land having limitations which in aggregate are moderately severe for sustained application of a given use; the limitations will reduce productivity or benefits and increase required inputs to the extent that the overall advantage to be gained from the use, although still attractive, will be appreciably inferior to that expected on class S1 land.
 - S3 Marginally Suitable** - Land having limitations which in aggregate are severe for sustained application of a given use and will so reduce productivity or benefits, or increase required inputs, that this expenditure will be only marginally justified.
 - Not Suitable/ Not Relevant**
- OTHER SIGNS**
- NGP Areas
 - Cacao
 - Land limitation
 - Land use

- CONVENTIONAL SIGNS**
- | | | |
|-----------------|-----------------|---------------------|
| ROADS | BOUNDARY | HYDROLOGY |
| Expressway | Region | Sea / Shoreline |
| Trunk line | Province | Lakes / Rivers |
| Primary | District | PLACES |
| Secondary | Municipality | Capital City / City |
| Tertiary | Barangay | Capital Town / Town |
| LAND USE | | |
| Built-up | Fishpond | Mangrove |



MISCELLANEOUS INFORMATION

SOURCES OF INFORMATION : Topographic information taken from NAMRIA Topographic Map at 1:50,000 scale. Land resources information from the Agricultural Land Management and Evaluation Division (ALMED), Soils Survey Division (SSD) and Laboratory Services Division (LSD) of BSWM. Rice areas obtained from the Land Use System (FAO, 2015) and Philippine Rice Information System (PRISM) (IRRI, 2015). Data analysis and compilation through the Land Resources Evaluation and Suitability Assessment of Strategic Production Areas for Major Commodities Project implemented by BSWM (2017).

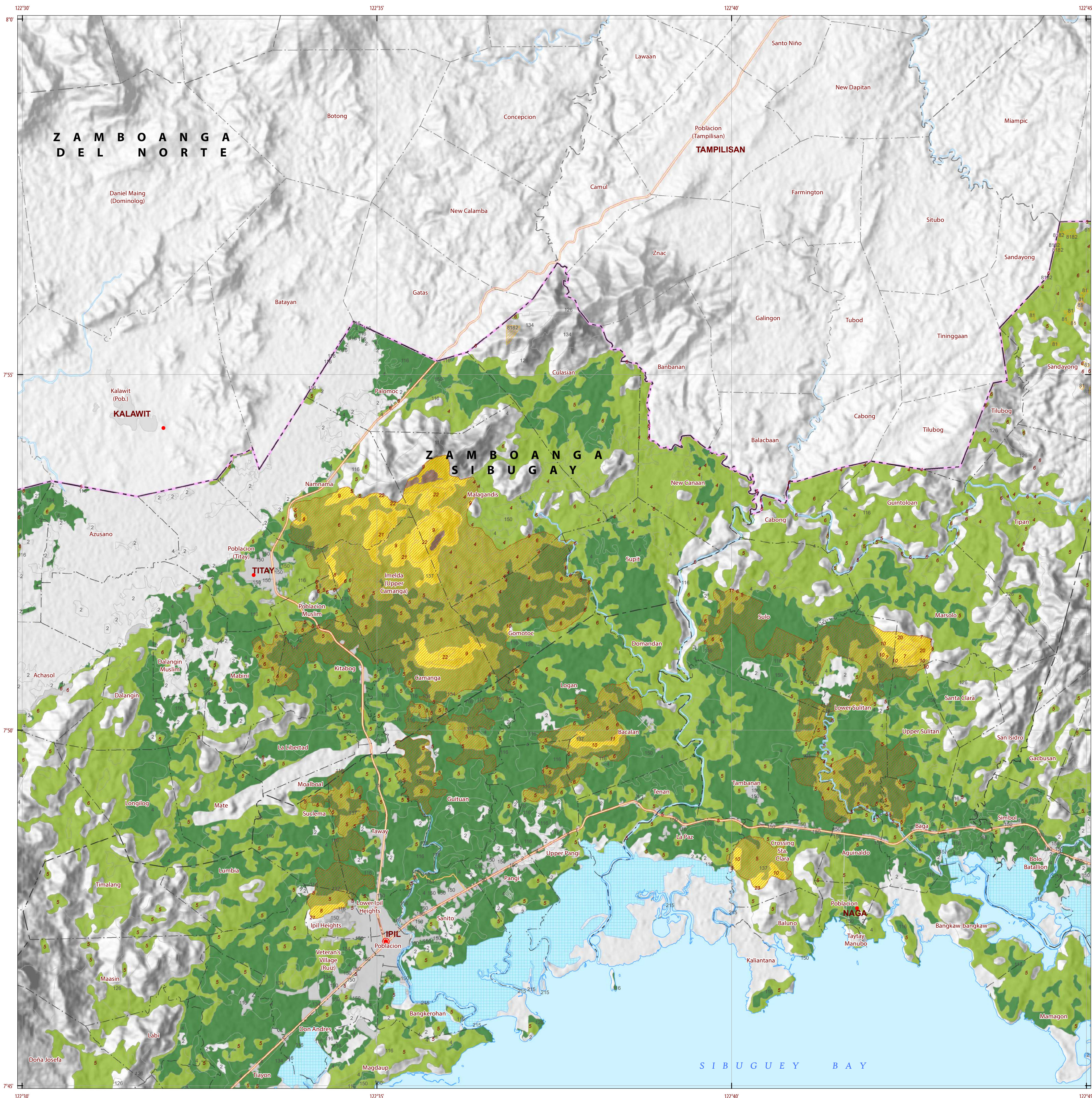
Project Leader : BERNARDO B. PASCUA
 GIS and Cartography : IRWIN K. SAMALCA

Funding Agency : Department of Agriculture - Bureau of Agricultural Research (DA-BAR)
 Collaborating Agencies : Philippine Council on Agriculture and Fisheries (PCAF)
 : Department of Agriculture and Fisheries - ARMM, Department of Agriculture Regional Field Office of Region IX, X, XI, XII and XIII (Caraga)
 : Local Government Unit (LGU) of covered provinces and municipalities

Map produced by the Geomatics and Soil Information Technology Division, Bureau of Soils and Water Management (BSWM).
 Users noting errors or omissions in this publication are requested to inform the Bureau of Soils and Water Management.

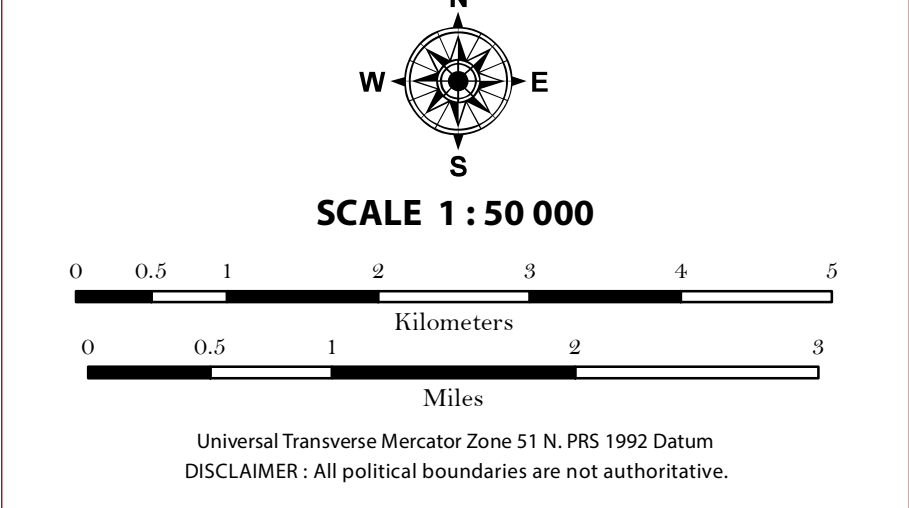
This publication is licensed under a Creative Commons Attribution 4.0 International License. Unless otherwise noted, copyright and any other intellectual property rights, in this publication is owned by the Philippine Government. This publication should be attributed as:
 BSWM, 2019. Land Suitability Map Series for Rubber of the PROVINCE OF ZAMBOANGA SIBUGAY (50,000 Scale). CC BY NC SA 4.0.

REPUBLIC OF THE PHILIPPINES
DEPARTMENT OF AGRICULTURE
BUREAU OF SOILS AND WATER MANAGEMENT
 SRDC Bldg, Elliptical Road Cor. Visayas Avenue, Diliman, Quezon City 1101
 Tel/Fax No.:(+632) 332-9534 E-mail: bswm@center.ded.dao.com



LAND SUITABILITY MAP RUBBER

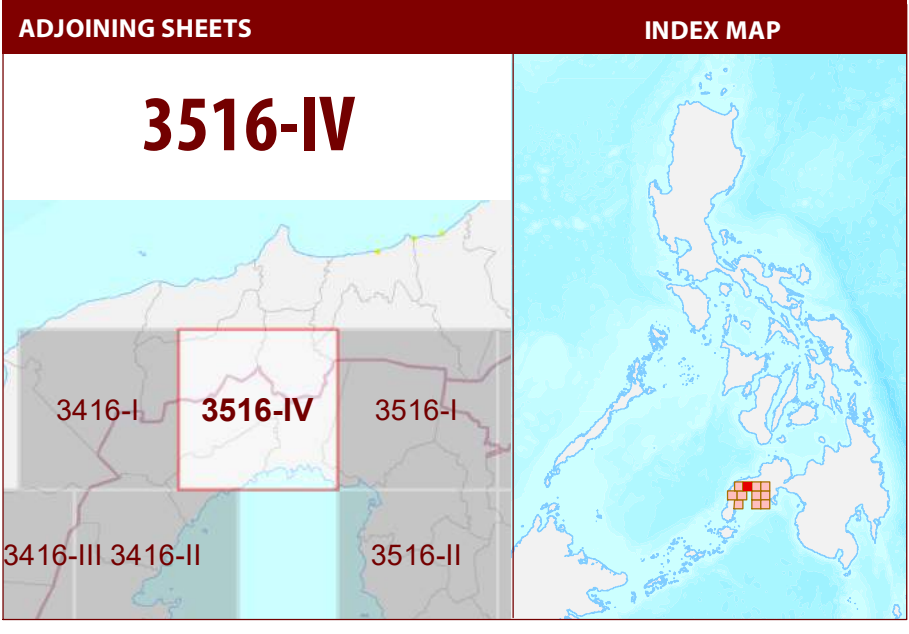
LAND RESOURCES EVALUATION AND SUITABILITY ASSESSMENT OF STRATEGIC PRODUCTION AREAS



LEGEND

- SUITABILITY CLASSES**
- S1 Highly Suitable** - Land having no significant limitations to sustained application of a given use, or only minor limitations that will not significantly reduce productivity or benefits and increase required inputs above an acceptable level.
 - S2 Moderately Suitable** - Land having limitations which in aggregate are moderately severe for sustained application of a given use; the limitations will reduce productivity or benefits and increase required inputs to the extent that the overall advantage to be gained from the use, although still attractive, will be appreciably inferior to that expected on class S1 land.
 - S3 Marginally Suitable** - Land having limitations which in aggregate are severe for sustained application of a given use and will so reduce productivity or benefits, or increase required inputs, that this expenditure will be only marginally justified.
 - Not Suitable/ Not Relevant**
- OTHER SIGNS**
- NGP Areas
 - Cacao
 - Land limitation
 - Land use

- CONVENTIONAL SIGNS**
- | | | |
|--------------|-----------------|-----------------------|
| ROADS | BOUNDARY | HYDROLOGY |
| Expressway | Region | Sea / Shoreline |
| Trunk line | Province | Lakes / Rivers |
| Primary | District | PLACES |
| Secondary | Municipality | ★ Capital City / City |
| Tertiary | Barangay | ● Capital Town / Town |
- LAND USE**
- Built-up
 - Fishpond
 - Mangrove



MISCELLANEOUS INFORMATION

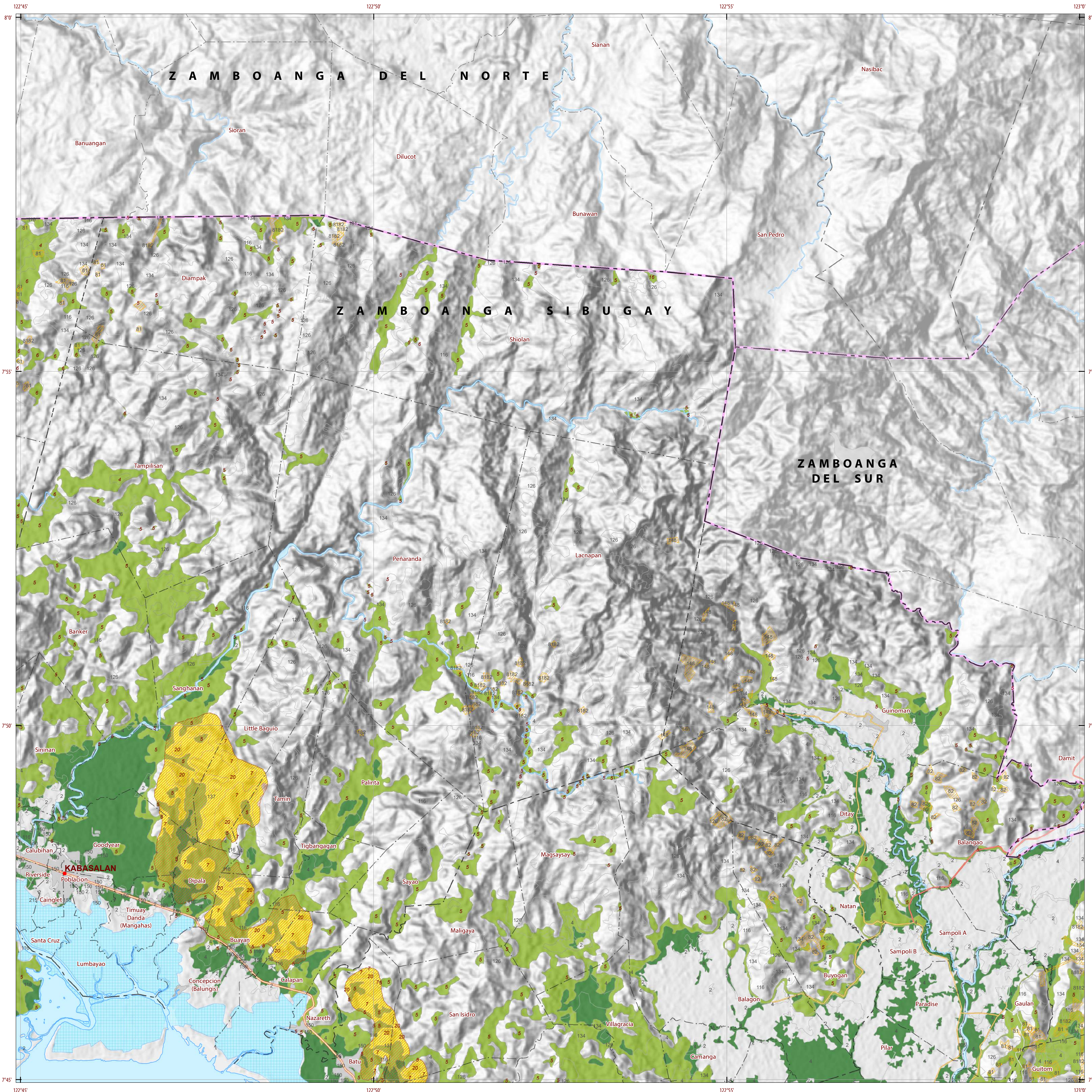
SOURCES OF INFORMATION: Topographic information taken from NAMRIA Topographic Map at 1:50,000 scale. Land resources information from the Agricultural Land Management and Evaluation Division (ALMED), Soils Survey Division (SSD) and Laboratory Services Division (LSD) of BSWM. Rice areas obtained from the Land Use System (FAO, 2015) and Philippine Rice Information System (PRISM) (IRRI, 2015). Data analysis and compilation through the Land Resources Evaluation and Suitability Assessment of Strategic Production Areas for Major Commodities Project implemented by BSWM (2017).

Project Leader : BERNARDO B. PASCUA
 GIS and Cartography : IRVIN K. SAMALCA

Funding Agency : Department of Agriculture - Bureau of Agricultural Research (DA-BAR)
 Collaborating Agencies : Philippine Council on Agriculture and Fisheries (PCAF)
 : Department of Agriculture and Fisheries - ARMM, Department of Agriculture Regional Field Office of Region IX, X, XI, XII and XIII (Caraga)
 : Local Government Unit (LGU) of covered provinces and municipalities

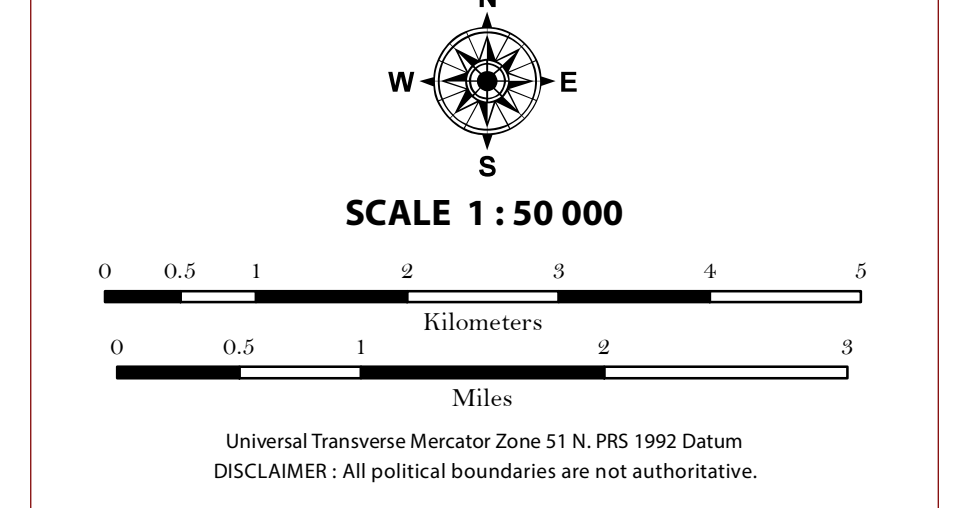
Map produced by the Geomatics and Soil Information Technology Division, Bureau of Soils and Water Management (BSWM). Users noting errors or omissions in this publication are requested to inform the Bureau of Soils and Water Management.

This publication is licensed under a Creative Commons Attribution 4.0 International License. Unless otherwise noted, copyright and any other intellectual property rights, in this publication is owned by the Philippine Government. This publication should be attributed as:
 BSWM, 2019. Land Suitability Map Series for Rubber of the PROVINCE OF ZAMBOANGA SIBUGAY (50,000 Scale). CC BY-NC-SA 4.0.



LAND SUITABILITY MAP RUBBER

LAND RESOURCES EVALUATION AND SUITABILITY ASSESSMENT OF STRATEGIC PRODUCTION AREAS



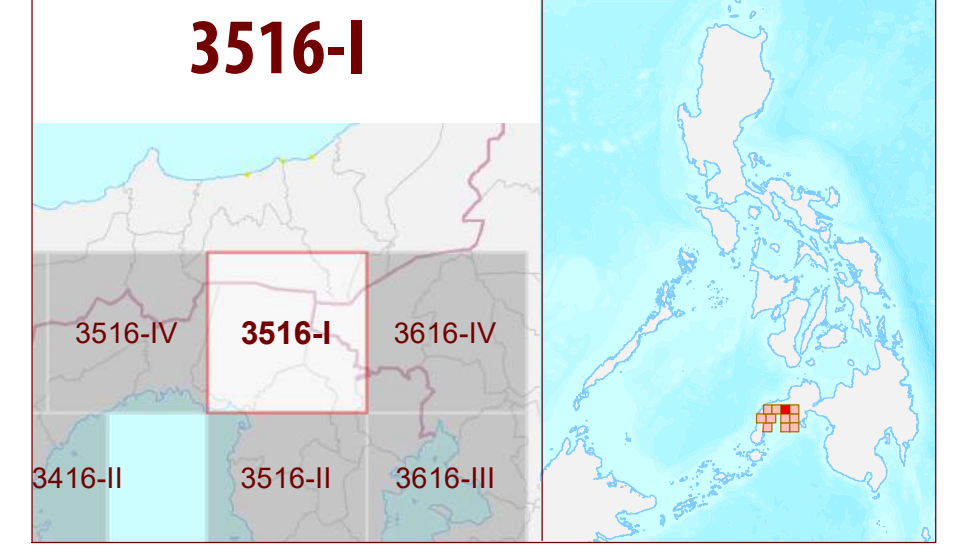
LEGEND

- SUITABILITY CLASSES**
- S1 Highly Suitable** - Land having no significant limitations to sustained application of a given use, or only minor limitations that will not significantly reduce productivity or benefits and will not raise inputs above an acceptable level.
 - S2 Moderately Suitable** - Land having limitations which in aggregate are moderately severe for sustained application of a given use; the limitations will reduce productivity or benefits and increase required inputs to the extent that the overall advantage to be gained from the use, although still attractive, will be appreciably inferior to that expected on class S1 land.
 - S3 Marginally Suitable** - Land having limitations which in aggregate are severe for sustained application of a given use and will so reduce productivity or benefits, or increase required inputs, that this expenditure will be only marginally justified.
- Not Suitable/ Not Relevant**
- OTHER SIGNS**
- NGP Areas
 - Cacao
 - Land limitation
 - Land use

CONVENTIONAL SIGNS

- ROADS**
- Expressway
 - Trunk line
 - Primary
 - Secondary
 - Tertiary
- BOUNDARY**
- Region
 - Province
 - District
 - Municipality
 - Barangay
- HYDROLOGY**
- Sea / Shoreline
 - Lakes / Rivers
- PLACES**
- Capital City / City
 - Capital Town / Town
- LAND USE**
- Built-up
 - Fishpond
 - Mangrove

ADJOINING SHEETS



MISCELLANEOUS INFORMATION

SOURCES OF INFORMATION: Topographic information taken from NAMRIA Topographic Map at 1:50,000 scale. Land resources information from the Agricultural Land Management and Evaluation Division (ALMED), Soils Survey Division (SSD) and Laboratory Services Division (LSD) of BSWM. Rice areas obtained from the Land Use System (FAO, 2015) and Philippine Rice Information System (PRISM) (IRRI, 2015). Data analysis and compilation through the Land Resources Evaluation and Suitability Assessment of Strategic Production Areas for Major Commodities Project implemented by BSWM (2017).

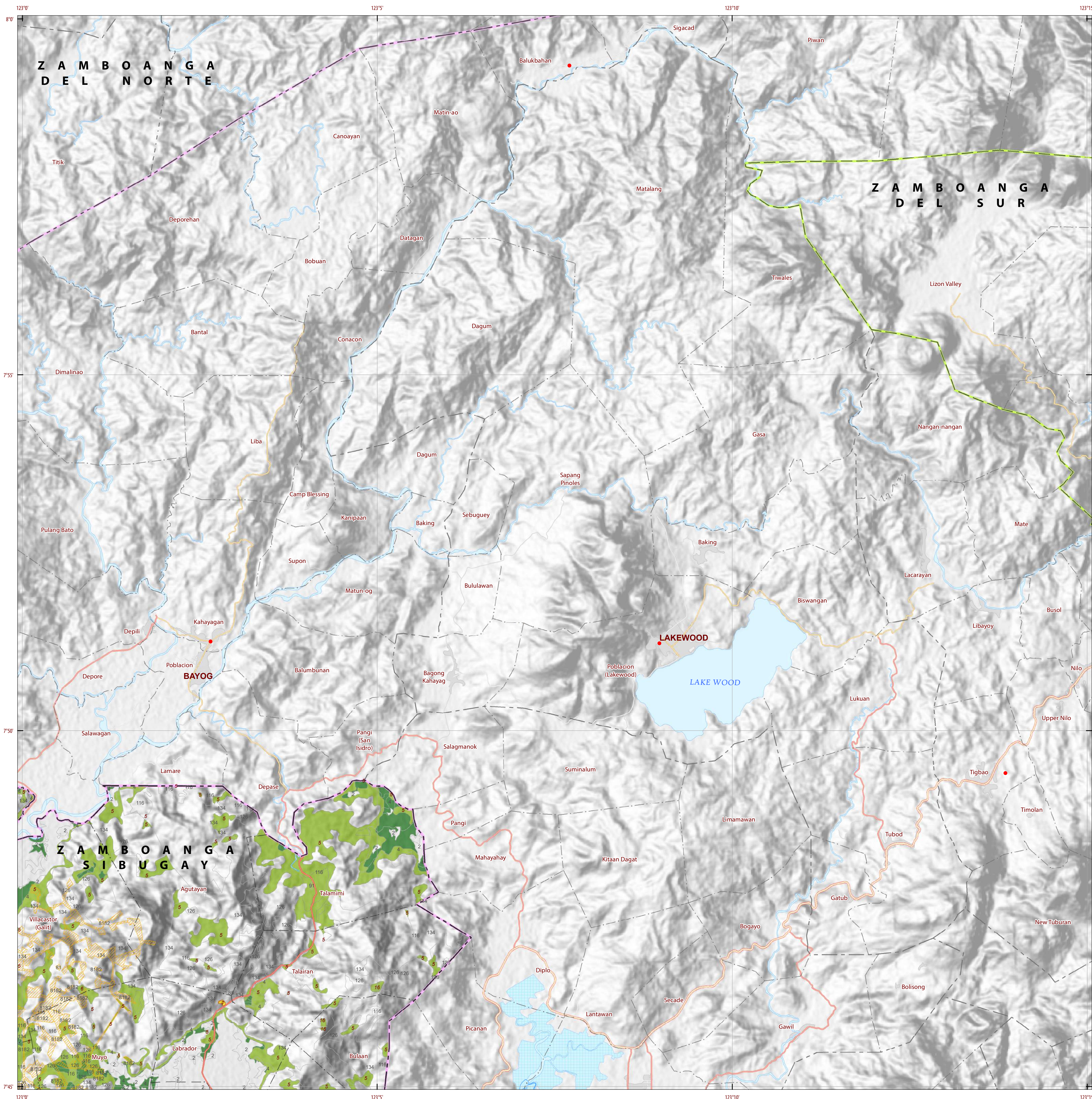
Project Leader : BERNARDO B. PASCUA
 GIS and Cartography : IRVIN K. SAMALCA

Funding Agency : Department of Agriculture - Bureau of Agricultural Research (DA-BAR)
 Collaborating Agencies : Philippine Council on Agriculture and Fisheries (PCAF)
 : Department of Agriculture and Fisheries - ARMM, Department of Agriculture Regional Field Office of Region IX, X, XI, XII and XIII (Caraga)
 : Local Government Unit (LGU) of covered provinces and municipalities

Map produced by the Geomatics and Soil Information Technology Division, Bureau of Soils and Water Management (BSWM).
 Users noting errors or omissions in this publication are requested to inform the Bureau of Soils and Water Management.

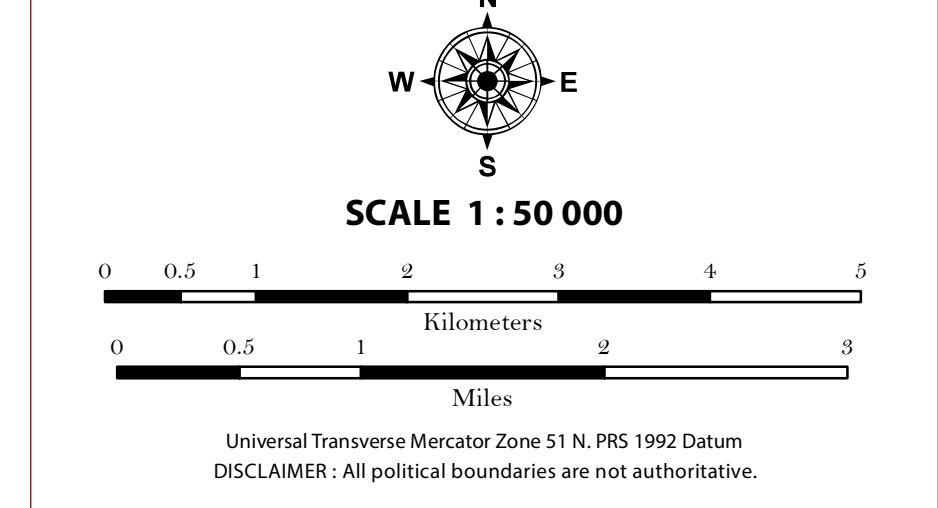
This publication is licensed under a Creative Commons Attribution 4.0 International License. Unless otherwise noted, copyright and any other intellectual property rights in this publication is owned by the Philippine Government. This publication should be attributed as:
 BSWM, 2019. Land Suitability Map Series for Rubber of the PROVINCE OF ZAMBOANGA SIBUGAY (50,000 Scale). CC BY-NC-SA 4.0.

REPUBLIC OF THE PHILIPPINES
 DEPARTMENT OF AGRICULTURE
 BUREAU OF SOILS AND WATER MANAGEMENT
 SRDC Bldg., Elliptical Road Cor. Visayas Avenue, Diliman, Quezon City 1101
 Tel/Fax No. +(632) 332-9534 E-mail: bswmcenter@da.gov.com



LAND SUITABILITY MAP RUBBER

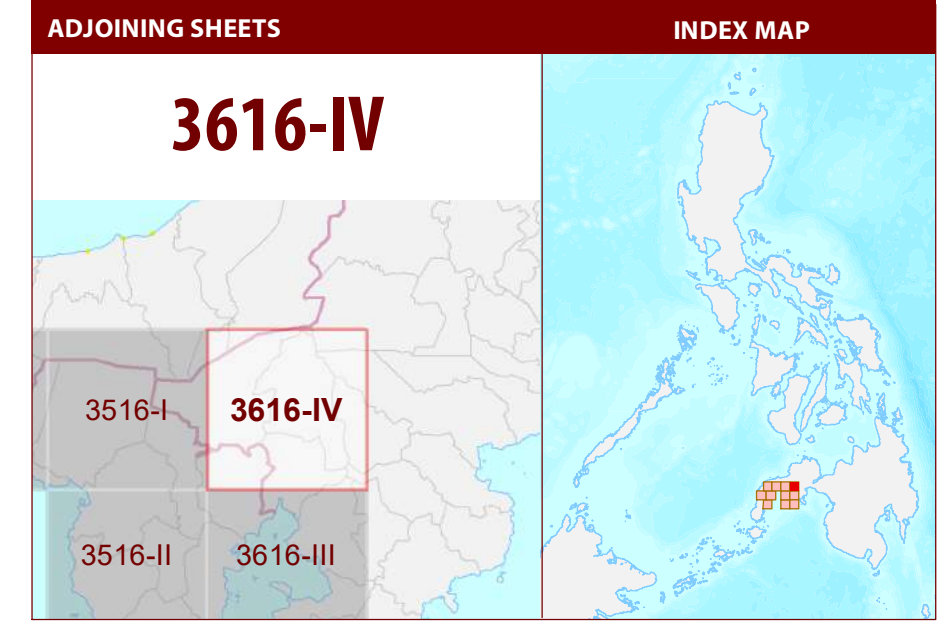
LAND RESOURCES EVALUATION AND SUITABILITY ASSESSMENT OF STRATEGIC PRODUCTION AREAS



LEGEND

- SUITABILITY CLASSES**
- S1 Highly Suitable** - Land having no significant limitations to sustained application of a given use, or only minor limitations that will not significantly reduce productivity or benefits and will not raise inputs above an acceptable level.
 - S2 Moderately Suitable** - Land having limitations which in aggregate are moderately severe for sustained application of a given use; the limitations will reduce productivity or benefits and increase required inputs to the extent that the overall advantage to be gained from the use, although still attractive, will be appreciably inferior to that expected on class S1 land.
 - S3 Marginally Suitable** - Land having limitations which in aggregate are severe for sustained application of a given use and will so reduce productivity or benefits, or increase required inputs, that this expenditure will be only marginally justified.
- Not Suitable/ Not Relevant**
- OTHER SIGNS**
- NGP Areas
 - Cacao
 - Land limitation
 - Land use

- CONVENTIONAL SIGNS**
- | | | |
|--------------|-----------------|-----------------------|
| ROADS | BOUNDARY | HYDROLOGY |
| Expressway | Region | Sea / Shoreline |
| Trunk line | Province | Lakes / Rivers |
| Primary | District | PLACES |
| Secondary | Municipality | ★ Capital City / City |
| Tertiary | Barangay | ● Capital Town / Town |
- LAND USE**
- Built-up
 - Fishpond
 - Mangrove



MISCELLANEOUS INFORMATION

SOURCES OF INFORMATION : Topographic information taken from NAMRIA Topographic Map at 1:50,000 scale. Land resources information from the Agricultural Land Management and Evaluation Division (ALMED), Soils Survey Division (SSD) and Laboratory Services Division (LSD) of BSWM. Rice areas obtained from the Land Use System (FAO, 2015) and Philippine Rice Information System (PRISM) (IRRI, 2015). Data analysis and compilation through the Land Resources Evaluation and Suitability Assessment of Strategic Production Areas for Major Commodities Project implemented by BSWM (2017).

Project Leader : BERNARDO B. PASCUA
 GIS and Cartography : IRWIN K. SAMALCA

Funding Agency : Department of Agriculture - Bureau of Agricultural Research (DA-BAR)
 Collaborating Agencies : Philippine Council on Agriculture and Fisheries (PCAF)
 : Department of Agriculture and Fisheries - ARMM, Department of Agriculture Regional Field Office of Region IX, X, XI, XII and XIII (Caraga)
 : Local Government Unit (LGU) of covered provinces and municipalities

Map produced by the Geomatics and Soil Information Technology Division, Bureau of Soils and Water Management (BSWM). Users noting errors or omissions in this publication are requested to inform the Bureau of Soils and Water Management.

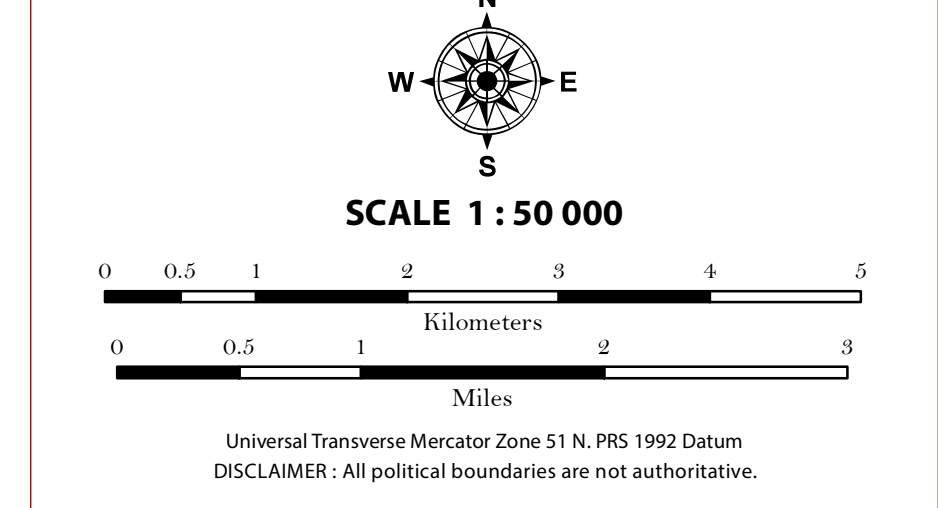
This publication is licensed under a Creative Commons Attribution 4.0 International License. Unless otherwise noted, copyright and any other intellectual property rights, in this publication is owned by the Philippine Government. This publication should be attributed as:
 BSWM, 2019. Land Suitability Map Series for Rubber of the PROVINCE OF ZAMBOANGA SIBUGAY (50,000 Scale). CC BY NC SA 4.0.

REPUBLIC OF THE PHILIPPINES
 DEPARTMENT OF AGRICULTURE
 BUREAU OF SOILS AND WATER MANAGEMENT
 SRDC Bldg, Elliptical Road Cor. Visayas Avenue, Diliman, Quezon City 1101
 Tel/Fax No. : (+632) 332-9534 E-mail : bswmcenter@da.gov.ph



LAND SUITABILITY MAP RUBBER

LAND RESOURCES EVALUATION AND SUITABILITY ASSESSMENT OF STRATEGIC PRODUCTION AREAS



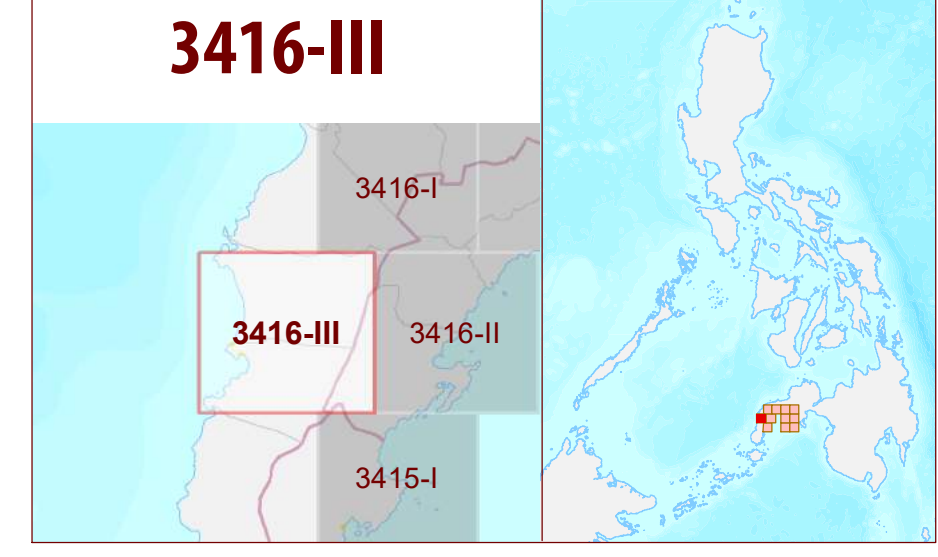
LEGEND

- SUITABILITY CLASSES**
- S1 Highly Suitable** - Land having no significant limitations to sustained application of a given use, or only minor limitations that will not significantly reduce productivity or benefits and will not raise inputs above an acceptable level.
 - S2 Moderately Suitable** - Land having limitations which in aggregate are moderately severe for sustained application of a given use; the limitations will reduce productivity or benefits and increase required inputs to the extent that the overall advantage to be gained from the use, although still attractive, will be appreciably inferior to that expected on class S1 land.
 - S3 Marginally Suitable** - Land having limitations which in aggregate are severe for sustained application of a given use and will so reduce productivity or benefits, or increase required inputs, that this expenditure will be only marginally justified.
- Not Suitable/ Not Relevant**
- OTHER SIGNS**
- NGP Areas
 - Cacao
 - Land limitation
 - Land use

CONVENTIONAL SIGNS

- | | | |
|-----------------|-----------------|-----------------------|
| ROADS | BOUNDARY | HYDROLOGY |
| Expressway | Region | Sea / Shoreline |
| Trunk line | Province | Lakes / Rivers |
| Primary | District | PLACES |
| Secondary | Municipality | ★ Capital City / City |
| Tertiary | Barangay | ● Capital Town / Town |
| LAND USE | | |
| Built-up | Fishpond | Mangrove |

ADJOINING SHEETS



MISCELLANEOUS INFORMATION

SOURCES OF INFORMATION: Topographic information taken from NAMRIA Topographic Map at 1:50,000 scale. Land resources information from the Agricultural Land Management and Evaluation Division (ALMED), Soils Survey Division (SSD) and Laboratory Services Division (LSD) of BSWM. Rice areas obtained from the Land Use System (FAO, 2015) and Philippine Rice Information System (PRISM) (IRRI, 2015). Data analysis and compilation through the Land Resources Evaluation and Suitability Assessment of Strategic Production Areas for Major Commodities Project implemented by BSWM (2017).

Project Leader : BERNARDO B. PASCUA
 GIS and Cartography : IRWIN K. SAMALCA

Funding Agency : Department of Agriculture - Bureau of Agricultural Research (DA-BAR)
 Collaborating Agencies : Philippine Council on Agriculture and Fisheries (PCAF)
 : Department of Agriculture and Fisheries - ARMM, Department of Agriculture Regional Field Office of Region IX, X, XI, XII and XIII (Caraga)
 : Local Government Unit (LGU) of covered provinces and municipalities

Map produced by the Geomatics and Soil Information Technology Division, Bureau of Soils and Water Management (BSWM). Users noting errors or omissions in this publication are requested to inform the Bureau of Soils and Water Management.

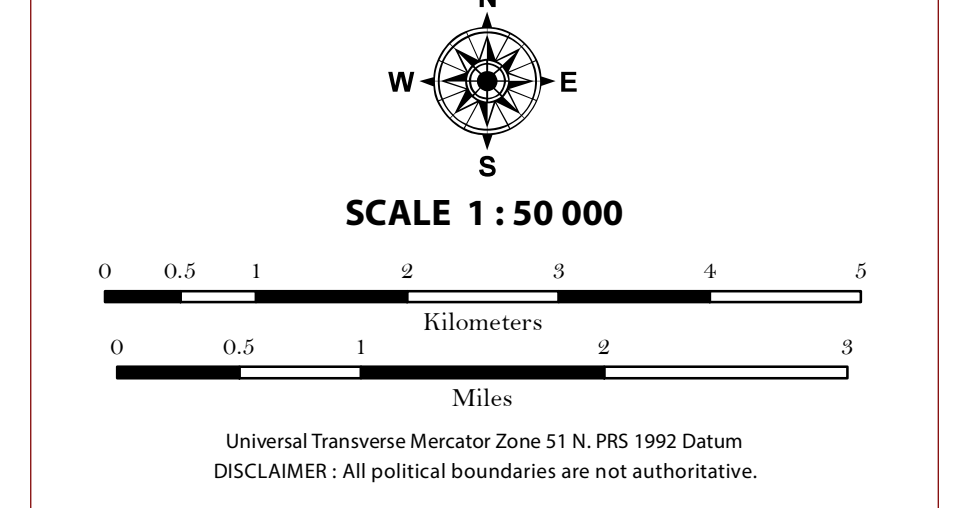
This publication is licensed under a Creative Commons Attribution 4.0 International License. Unless otherwise noted, copyright and any other intellectual property rights, in this publication is owned by the Philippine Government. This publication should be attributed as:
 BSWM, 2019. Land Suitability Map Series for Rubber of the PROVINCE OF ZAMBOANGA SIBUGAY (50,000 Scale). CC BY NC SA 4.0.

REPUBLIC OF THE PHILIPPINES
 DEPARTMENT OF AGRICULTURE
 BUREAU OF SOILS AND WATER MANAGEMENT
 SRDC Bldg., Elliptical Road Cor. Visayas Avenue, Diliman, Quezon City 1101
 Tel/Fax No.:(+632) 332-9534 E-mail: bswmcenter@yahoo.com



LAND SUITABILITY MAP RUBBER

LAND RESOURCES EVALUATION AND SUITABILITY ASSESSMENT OF STRATEGIC PRODUCTION AREAS



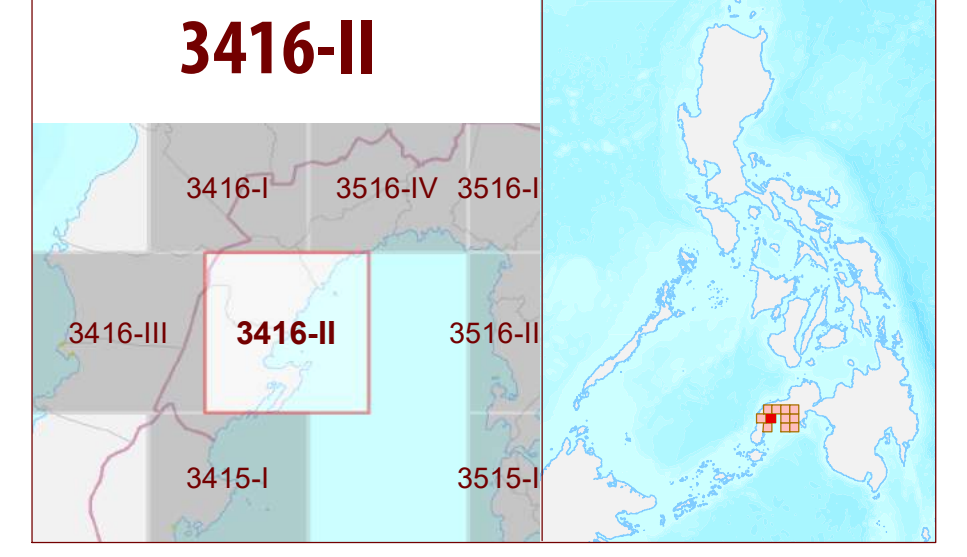
LEGEND

- SUITABILITY CLASSES**
- S1 Highly Suitable** - Land having no significant limitations to sustained application of a given use, or only minor limitations that will not significantly reduce productivity or benefits and will not raise inputs above an acceptable level.
 - S2 Moderately Suitable** - Land having limitations which in aggregate are moderately severe for sustained application of a given use; the limitations will reduce productivity or benefits and increase required inputs to the extent that the overall advantage to be gained from the use, although still attractive, will be appreciably inferior to that expected on class S1 land.
 - S3 Marginally Suitable** - Land having limitations which in aggregate are severe for sustained application of a given use and will so reduce productivity or benefits, or increase required inputs, that this expenditure will be only marginally justified.
- Not Suitable/ Not Relevant**
- OTHER SIGNS**
- NGP Areas
 - Cacao
 - Land limitation
 - Land use

CONVENTIONAL SIGNS

- ROADS**
- Expressway
 - Trunk line
 - Primary
 - Secondary
 - Tertiary
- BOUNDARY**
- Region
 - Province
 - District
 - Municipality
 - Barangay
- HYDROLOGY**
- Sea / Shoreline
 - Lakes / Rivers
- PLACES**
- Municipality
 - Capital City / City
 - Capital Town / Town
- LAND USE**
- Built-up
 - Fishpond
 - Mangrove

ADJOINING SHEETS



MISCELLANEOUS INFORMATION

SOURCES OF INFORMATION : Topographic information taken from NAMRIA Topographic Map at 1:50,000 scale. Land resources information from the Agricultural Land Management and Evaluation Division (ALMED), Soils Survey Division (SSD) and Laboratory Services Division (LSD) of BSWM. Rice areas obtained from the Land Use System (FAO, 2015) and Philippine Rice Information System (PRISM) (IRRI, 2015). Data analysis and compilation through the Land Resources Evaluation and Suitability Assessment of Strategic Production Areas for Major Commodities Project implemented by BSWM (2017).

Project Leader : BERNARDO B. PASCUA
GIS and Cartography : IRWIN K. SAMALCA

Funding Agency : Department of Agriculture - Bureau of Agricultural Research (DA-BAR)
Collaborating Agencies : Philippine Council on Agriculture and Fisheries (PCAF)
: Department of Agriculture and Fisheries - ARMM, Department of Agriculture Regional Field Office of Region IX, X, XI, XII and XIII (Caraga)
: Local Government Unit (LGU) of covered provinces and municipalities

Map produced by the Geomatics and Soil Information Technology Division, Bureau of Soils and Water Management (BSWM). Users noting errors or omissions in this publication are requested to inform the Bureau of Soils and Water Management.

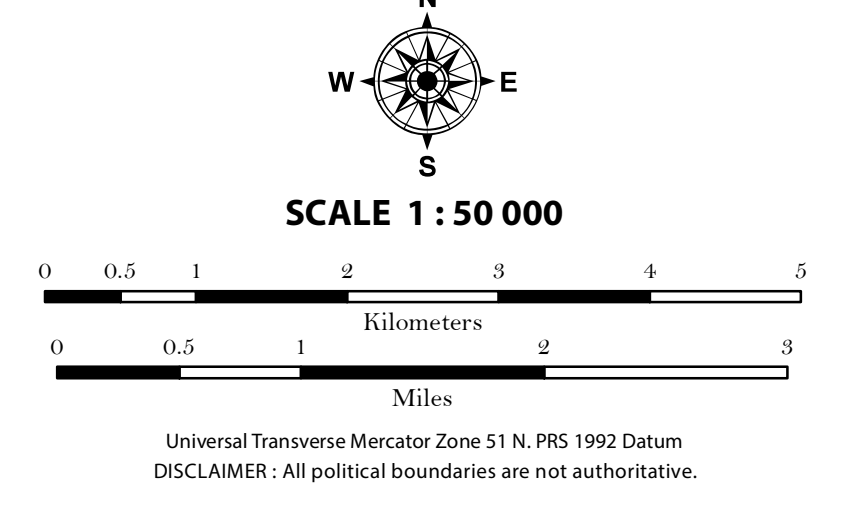
This publication is licensed under a Creative Commons Attribution 4.0 International License. Unless otherwise noted, copyright and any other intellectual property rights, in this publication is owned by the Philippine Government. This publication should be attributed as:
BSWM, 2019. Land Suitability Map Series for Rubber of the PROVINCE OF ZAMBOANGA SIBUGAY (50,000 Scale) - CC BY-NC-SA 4.0.

REPUBLIC OF THE PHILIPPINES
DEPARTMENT OF AGRICULTURE
BUREAU OF SOILS AND WATER MANAGEMENT
SRDC Bldg, Elliptical Road Cor. Visayas Avenue, Diliman, Quezon City 1101
Tel/Fax No.: (+632) 332-9534 E-mail: bswmcenter@da.gov.ph



LAND SUITABILITY MAP RUBBER

LAND RESOURCES EVALUATION AND SUITABILITY ASSESSMENT OF STRATEGIC PRODUCTION AREAS



LEGEND

SUITABILITY CLASSES

- S1 Highly Suitable** - Land having no significant limitations to sustained application of a given use, or only minor limitations that will not significantly reduce productivity or benefits and will not raise inputs above an acceptable level.
- S2 Moderately Suitable** - Land having limitations which in aggregate are moderately severe for sustained application of a given use; the limitations will reduce productivity or benefits and increase required inputs to the extent that the overall advantage to be gained from the use, although still attractive, will be appreciably inferior to that expected on class S1 land.
- S3 Marginally Suitable** - Land having limitations which in aggregate are severe for sustained application of a given use and will so reduce productivity or benefits, or increase required inputs, that this expenditure will be only marginally justified.
- Not Suitable/ Not Relevant**

OTHER SIGNS

- NGP Areas
- Cacao
- Land limitation
- Land use

CONVENTIONAL SIGNS

ROADS	BOUNDARY	HYDROLOGY
Expressway	Region	Sea / Shoreline
Trunk line	Province	Lakes / Rivers
Primary	District	PLACES
Secondary	Municipality	★ Capital City / City
Tertiary	Barangay	● Capital Town / Town
LAND USE		
Built-up	Fishpond	Mangrove

ADJOINING SHEETS

INDEX MAP

3516-II

MISCELLANEOUS INFORMATION

SOURCES OF INFORMATION: Topographic information taken from NAMRIA Topographic Map at 1:50,000 scale. Land resources information from the Agricultural Land Management and Evaluation Division (ALMED), Soils Survey Division (SSD) and Laboratory Services Division (LSD) of BSWM. Rice areas obtained from the Land Use System (FAO, 2015) and Philippine Rice Information System (PRISM) (IRRI, 2015). Data analysis and compilation through the Land Resources Evaluation and Suitability Assessment of Strategic Production Areas for Major Commodities Project implemented by BSWM (2017).

Project Leader : BERNARDO B. PASCUA
GIS and Cartography : IRWIN K. SAMALCA

Funding Agency : Department of Agriculture - Bureau of Agricultural Research (DA-BAR)
Collaborating Agencies : Philippine Council on Agriculture and Fisheries (PCAF)
: Department of Agriculture and Fisheries - ARMM, Department of Agriculture Regional Field Office of Region IX, X, XII and XIII (Caraga)
: Local Government Unit (LGU) of covered provinces and municipalities

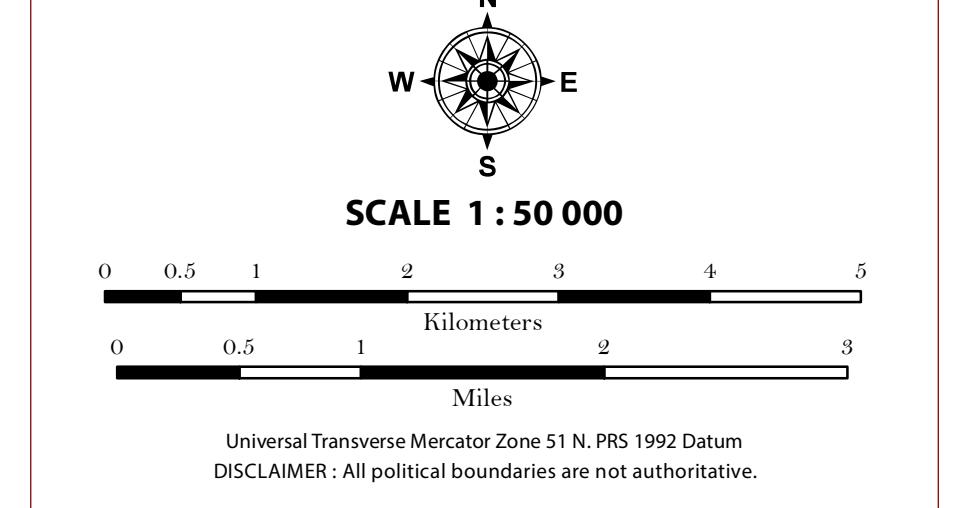
Map produced by the Geomatics and Soil Information Technology Division, Bureau of Soils and Water Management (BSWM).
Users noting errors or omissions in this publication are requested to inform the Bureau of Soils and Water Management.

This publication is licensed under a Creative Commons Attribution 4.0 International License. Unless otherwise noted, copyright and any other intellectual property rights in this publication are owned by the Philippine Government. This publication should be attributed as:
BSWM, 2019. Land Suitability Map Series for Rubber of the PROVINCE OF ZAMBOANGA SIBUGAY (50,000 Scale). CC BY NC SA 4.0.



LAND SUITABILITY MAP RUBBER

LAND RESOURCES EVALUATION AND SUITABILITY ASSESSMENT OF STRATEGIC PRODUCTION AREAS



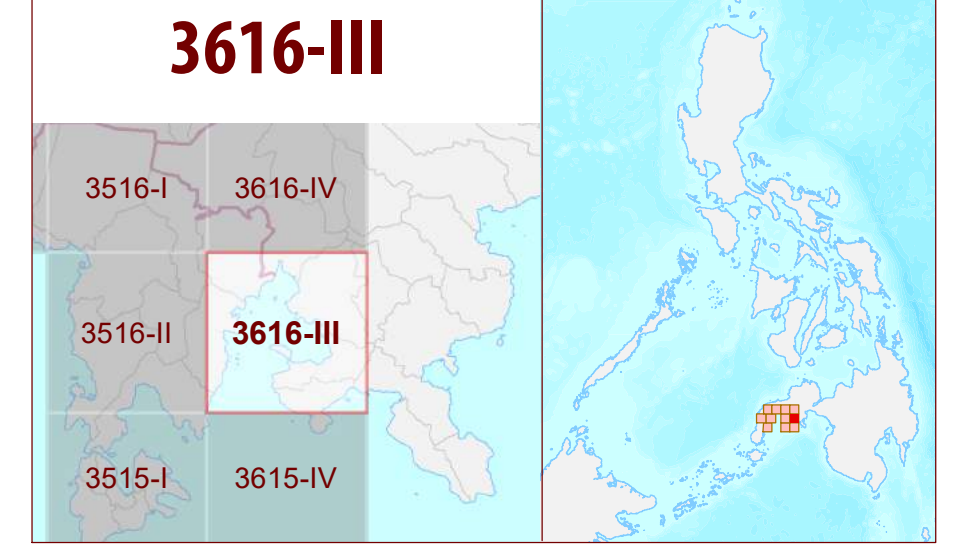
LEGEND

- SUITABILITY CLASSES**
- S1 Highly Suitable** - Land having no significant limitations to sustained application of a given use, or only minor limitations that will not significantly reduce productivity or benefits and will not raise inputs above an acceptable level.
 - S2 Moderately Suitable** - Land having limitations which in aggregate are moderately severe for sustained application of a given use; the limitations will reduce productivity or benefits and increase required inputs to the extent that the overall advantage to be gained from the use, although still attractive, will be appreciably inferior to that expected on class S1 land.
 - S3 Marginally Suitable** - Land having limitations which in aggregate are severe for sustained application of a given use and will so reduce productivity or benefits, or increase required inputs, that this expenditure will be only marginally justified.
- Not Suitable/ Not Relevant**
- OTHER SIGNS**
- NGP Areas
 - Cacao
 - Land limitation
 - Land use

CONVENTIONAL SIGNS

- ROADS**
- Expressway
 - Trunk line
 - Primary
 - Secondary
 - Tertiary
- BOUNDARY**
- Region
 - Province
 - District
 - Municipality
 - Barangay
- HYDROLOGY**
- Sea / Shoreline
 - Lakes / Rivers
- PLACES**
- Capital City / City
 - Capital Town / Town
- LAND USE**
- Built-up
 - Fishpond
 - Mangrove

ADJOINING SHEETS



MISCELLANEOUS INFORMATION

SOURCES OF INFORMATION : Topographic information taken from NAMRIA Topographic Map at 1:50,000 scale. Land resources information from the Agricultural Land Management and Evaluation Division (ALMED), Soils Survey Division (SSD) and Laboratory Services Division (LSD) of BSWM. Rice areas obtained from the Land Use System (FAO, 2015) and Philippine Rice Information System (PRISM) (IRRI, 2015). Data analysis and compilation through the Land Resources Evaluation and Suitability Assessment of Strategic Production Areas for Major Commodities Project implemented by BSWM (2017).

Project Leader : BERNARDO B. PASCUA
GIS and Cartography : IRWIN K. SAMALCA

Funding Agency : Department of Agriculture - Bureau of Agricultural Research (DA-BAR)
Collaborating Agencies : Philippine Council on Agriculture and Fisheries (PCAF)
: Department of Agriculture and Fisheries - ARMM, Department of Agriculture Regional Field Office of Region IX, X, XI, XII and XIII (Caraga)
: Local Government Unit (LGU) of covered provinces and municipalities

Map produced by the Geomatics and Soil Information Technology Division, Bureau of Soils and Water Management (BSWM).
Users noting errors or omissions in this publication are requested to inform the Bureau of Soils and Water Management.

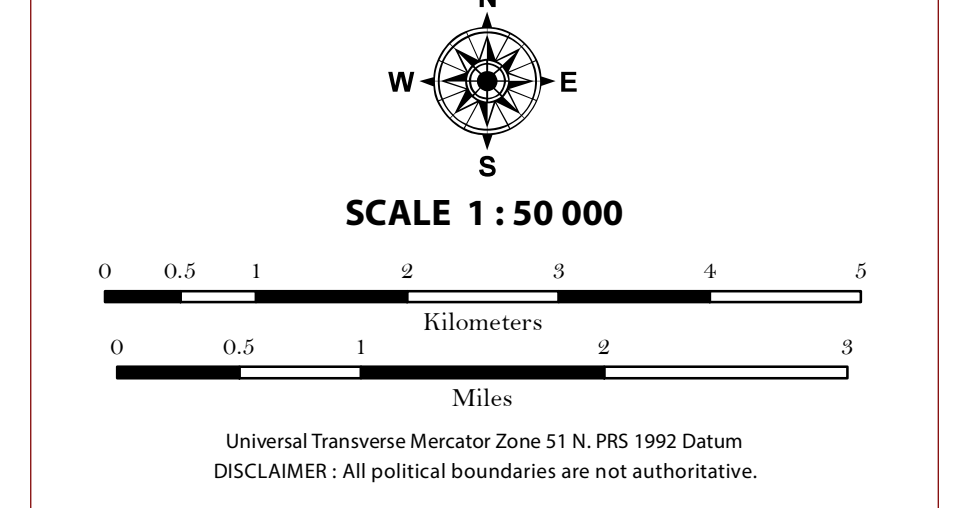
This publication is licensed under a Creative Commons Attribution 4.0 International License. Unless otherwise noted, copyright and any other intellectual property rights, in this publication is owned by the Philippine Government. This publication should be attributed as:
BSWM, 2019. Land Suitability Map Series for Rubber of the PROVINCE OF ZAMBOANGA SIBUGAY (50,000 Scale). CC BY-NC-SA 4.0.

REPUBLIC OF THE PHILIPPINES
DEPARTMENT OF AGRICULTURE
BUREAU OF SOILS AND WATER MANAGEMENT
SRDC Bldg., Elliptical Road Cor. Visayas Avenue, Diliman, Quezon City 1101
Tel/Fax No.: +(632) 332-9534 E-mail: bswmcenter@da.gov.ph



LAND SUITABILITY MAP RUBBER

LAND RESOURCES EVALUATION AND SUITABILITY ASSESSMENT OF STRATEGIC PRODUCTION AREAS



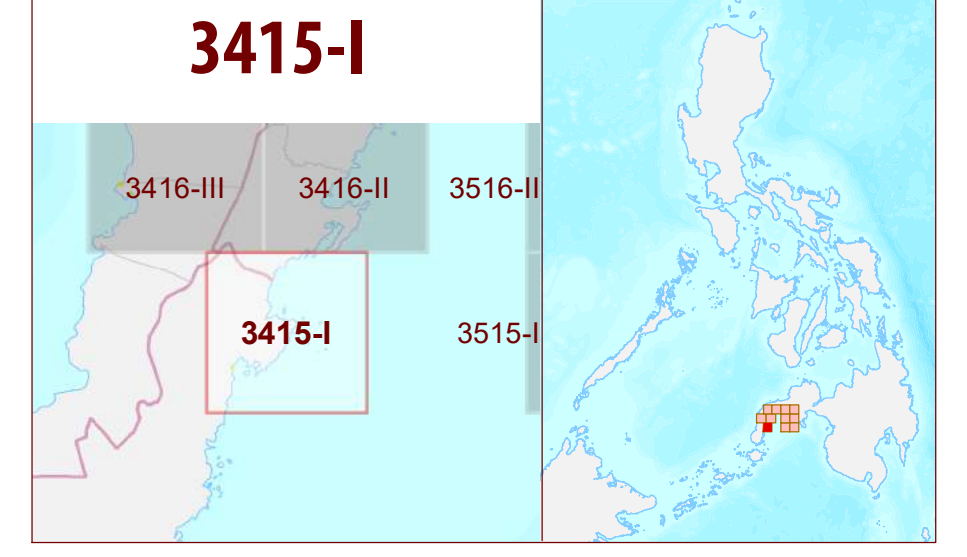
LEGEND

- SUITABILITY CLASSES**
- S1 Highly Suitable** - Land having no significant limitations to sustained application of a given use, or only minor limitations that will not significantly reduce productivity or benefits and will not raise inputs above an acceptable level.
 - S2 Moderately Suitable** - Land having limitations which in aggregate are moderately severe for sustained application of a given use; the limitations will reduce productivity or benefits and increase required inputs to the extent that the overall advantage to be gained from the use, although still attractive, will be appreciably inferior to that expected on class S1 land.
 - S3 Marginally Suitable** - Land having limitations which in aggregate are severe for sustained application of a given use and will so reduce productivity or benefits, or increase required inputs, that this expenditure will be only marginally justified.
- Not Suitable/ Not Relevant**
- OTHER SIGNS**
- NGP Areas
 - Cacao
 - Land limitation
 - Land use

CONVENTIONAL SIGNS

- ROADS**
- Expressway
 - Trunk line
 - Primary
 - Secondary
 - Tertiary
- BOUNDARY**
- Region
 - Province
 - District
 - Municipality
 - Barangay
- HYDROLOGY**
- Sea / Shoreline
 - Lakes / Rivers
- PLACES**
- Capital City / City
 - Capital Town / Town
- LAND USE**
- Built-up
 - Fishpond
 - Mangrove

ADJOINING SHEETS



MISCELLANEOUS INFORMATION

SOURCES OF INFORMATION : Topographic information taken from NAMRIA Topographic Map at 1:50,000 scale. Land resources information from the Agricultural Land Management and Evaluation Division (ALMED), Soils Survey Division (SSD) and Laboratory Services Division (LSD) of BSWM. Rice areas obtained from the Land Use System (FAO, 2015) and Philippine Rice Information System (PRISM) (IRRI, 2015). Data analysis and compilation through the Land Resources Evaluation and Suitability Assessment of Strategic Production Areas for Major Commodities Project implemented by BSWM (2017).

Project Leader : BERNARDO B. PASCUA
 GIS and Cartography : IRWIN K. SAMALCA

Funding Agency : Department of Agriculture - Bureau of Agricultural Research (DA-BAR)
 Collaborating Agencies : Philippine Council on Agriculture and Fisheries (PCAF)
 : Department of Agriculture and Fisheries - ARMM, Department of Agriculture Regional Field Office of Region IX, X, XI, XII and XIII (Caraga)
 : Local Government Unit (LGU) of covered provinces and municipalities

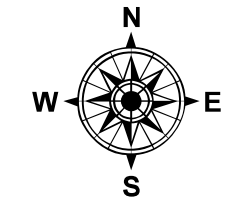
Map produced by the Geomatics and Soil Information Technology Division, Bureau of Soils and Water Management (BSWM).
 Users noting errors or omissions in this publication are requested to inform the Bureau of Soils and Water Management.

This publication is licensed under a Creative Commons Attribution 4.0 International License. Unless otherwise noted, copyright and any other intellectual property rights, in this publication is owned by the Philippine Government. This publication should be attributed as:
 BSWM, 2019. Land Suitability Map Series for Rubber of the PROVINCE OF ZAMBOANGA SIBUGAY (50,000 Scale). CC BY NC SA 4.0.

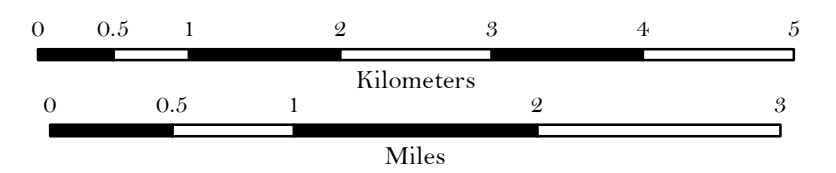


**LAND SUITABILITY MAP
RUBBER**

**LAND RESOURCES EVALUATION AND SUITABILITY
ASSESSMENT OF STRATEGIC PRODUCTION AREAS**



SCALE 1 : 50 000



Universal Transverse Mercator Zone 51 N, PRS 1992 Datum
DISCLAIMER: All political boundaries are not authoritative.

LEGEND

SUITABILITY CLASSES

- S1 Highly Suitable** - Land having no significant limitations to sustained application of a given use, or only minor limitations that will not significantly reduce productivity or benefits and will not raise inputs above an acceptable level.
- S2 Moderately Suitable** - Land having limitations which in aggregate are moderately severe for sustained application of a given use; the limitations will reduce productivity or benefits and increase required inputs to the extent that the overall advantage to be gained from the use, although still attractive, will be appreciably inferior to that expected on class S1 land.
- S3 Marginally Suitable** - Land having limitations which in aggregate are severe for sustained application of a given use and will so reduce productivity or benefits, or increase required inputs, that this expenditure will be only marginally justified.

Not Suitable/ Not Relevant

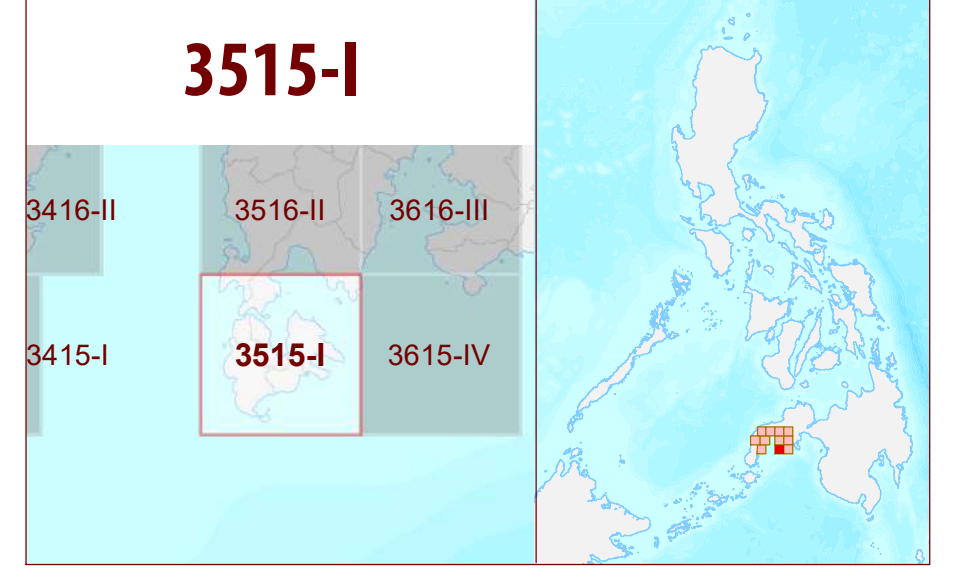
OTHER SIGNS

- NGP Areas
- Cacao
- Land limitation
- Land use

CONVENTIONAL SIGNS

ROADS	BOUNDARY	HYDROLOGY
Expressway	Region	Sea / Shoreline
Trunk line	Province	Lakes / Rivers
Primary	District	PLACES
Secondary	Municipality	★ Capital City / City
Tertiary	Barangay	● Capital Town / Town
LAND USE		
Built-up	Fishpond	Mangrove

ADJOINING SHEETS **INDEX MAP**



MISCELLANEOUS INFORMATION

SOURCES OF INFORMATION : Topographic information taken from NAMRIA Topographic Map at 1:50,000 scale. Land resources information from the Agricultural Land Management and Evaluation Division (ALMED), Soils Survey Division (SSD) and Laboratory Services Division (LSD) of BSWM. Rice areas obtained from the Land Use System (FAO, 2015) and Philippine Rice Information System (PRISM) (IRRI, 2015). Data analysis and compilation through the Land Resources Evaluation and Suitability Assessment of Strategic Production Areas for Major Commodities Project implemented by BSWM (2017).

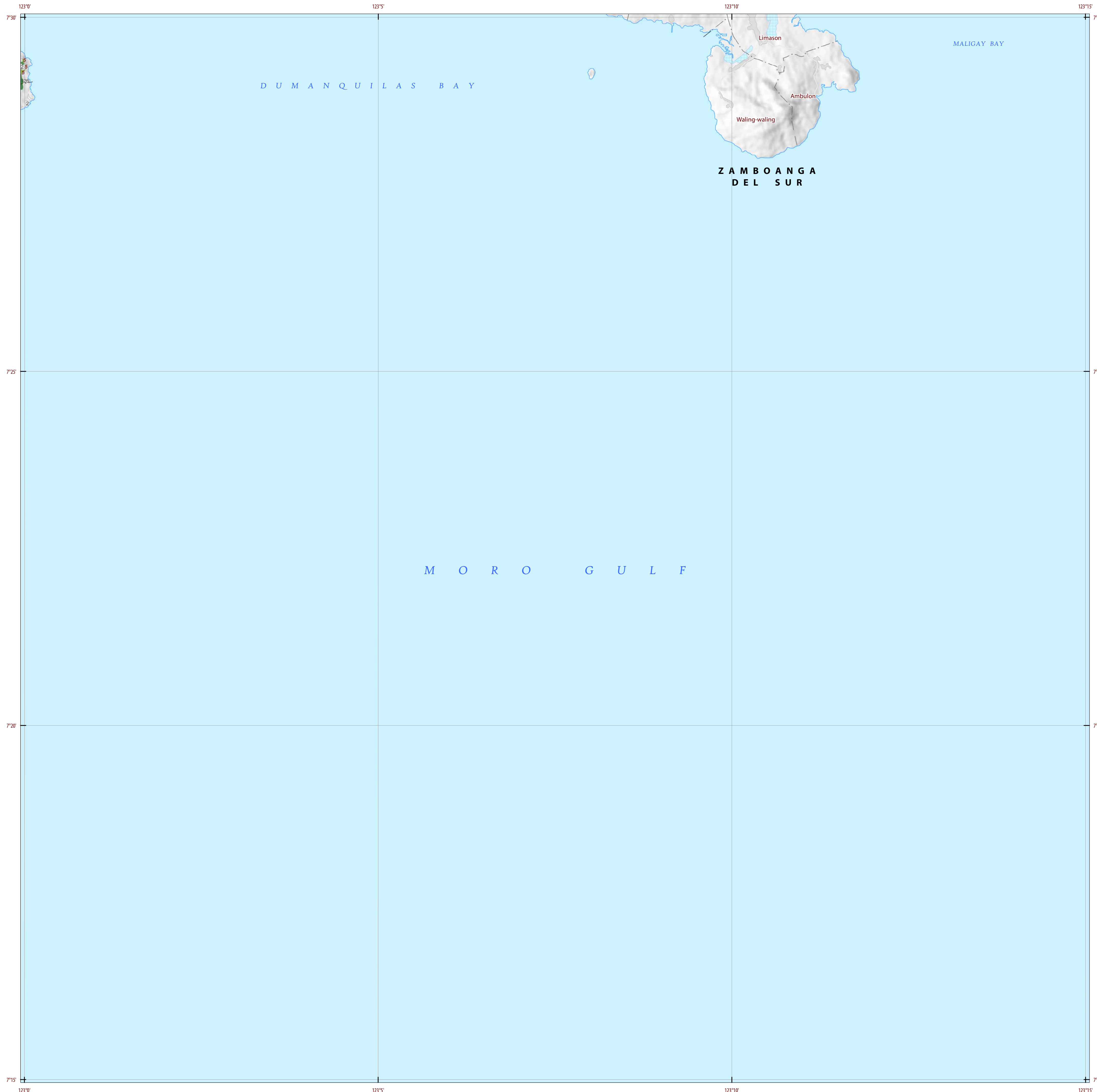
Project Leader : BERNARDO B. PASCUA
GIS and Cartography : IRWIN K. SAMALCA

Funding Agency : Department of Agriculture - Bureau of Agricultural Research (DA-BAR)
Collaborating Agencies : Philippine Council on Agriculture and Fisheries (PCAF)
: Department of Agriculture and Fisheries - ARMM, Department of Agriculture Regional Field Office of Region IX, X, XI, XII and XIII (Caraga)
: Local Government Unit (LGU) of covered provinces and municipalities

Map produced by the Geomatics and Soil Information Technology Division, Bureau of Soils and Water Management (BSWM).
Users noting errors or omissions in this publication are requested to inform the Bureau of Soils and Water Management.

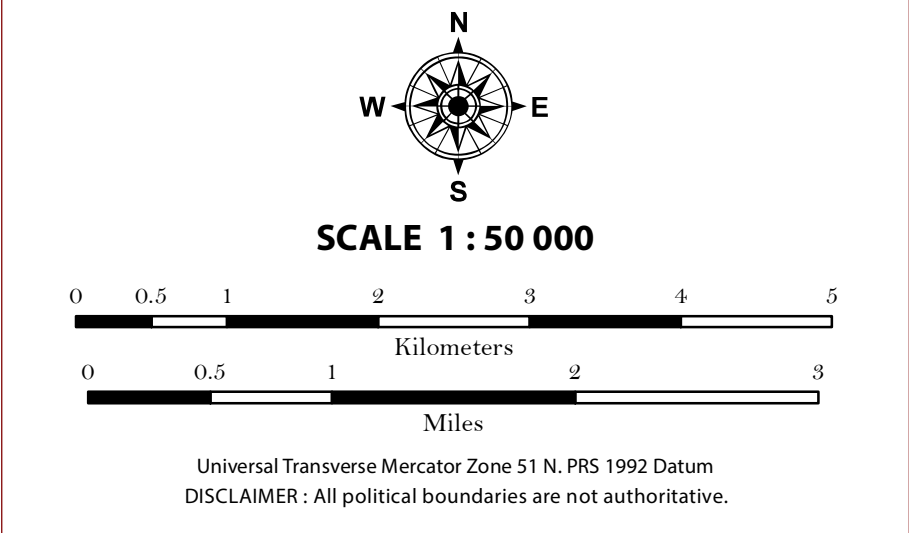
This publication is licensed under a Creative Commons Attribution 4.0 International License. Unless otherwise noted, copyright and any other intellectual property rights, in this publication is owned by the Philippine Government. This publication should be attributed as:
BSWM, 2019. Land Suitability Map Series for Rubber of the PROVINCE OF ZAMBOANGA SIBUGAY (50,000 Scale) - CC BY NC SA 4.0.

**REPUBLIC OF THE PHILIPPINES
DEPARTMENT OF AGRICULTURE
BUREAU OF SOILS AND WATER MANAGEMENT**
SRDC Bldg, Elliptical Road Cor. Visayas Avenue, Diliman, Quezon City 1101
Tel/Fax No.:(+632) 332-9534 E-mail: bswmcenter@yahoo.com



LAND SUITABILITY MAP RUBBER

LAND RESOURCES EVALUATION AND SUITABILITY ASSESSMENT OF STRATEGIC PRODUCTION AREAS



LEGEND

SUITABILITY CLASSES

- S1 Highly Suitable** - Land having no significant limitations to sustained application of a given use, or only minor limitations that will not significantly reduce productivity or benefits and will not raise inputs above an acceptable level.
- S2 Moderately Suitable** - Land having limitations which in aggregate are moderately severe for sustained application of a given use; the limitations will reduce productivity or benefits and increase required inputs to the extent that the overall advantage to be gained from the use, although still attractive, will be appreciably inferior to that expected on class S1 land.
- S3 Marginally Suitable** - Land having limitations which in aggregate are severe for sustained application of a given use and will so reduce productivity or benefits, or increase required inputs, that this expenditure will be only marginally justified.
- Not Suitable/ Not Relevant**

OTHER SIGNS

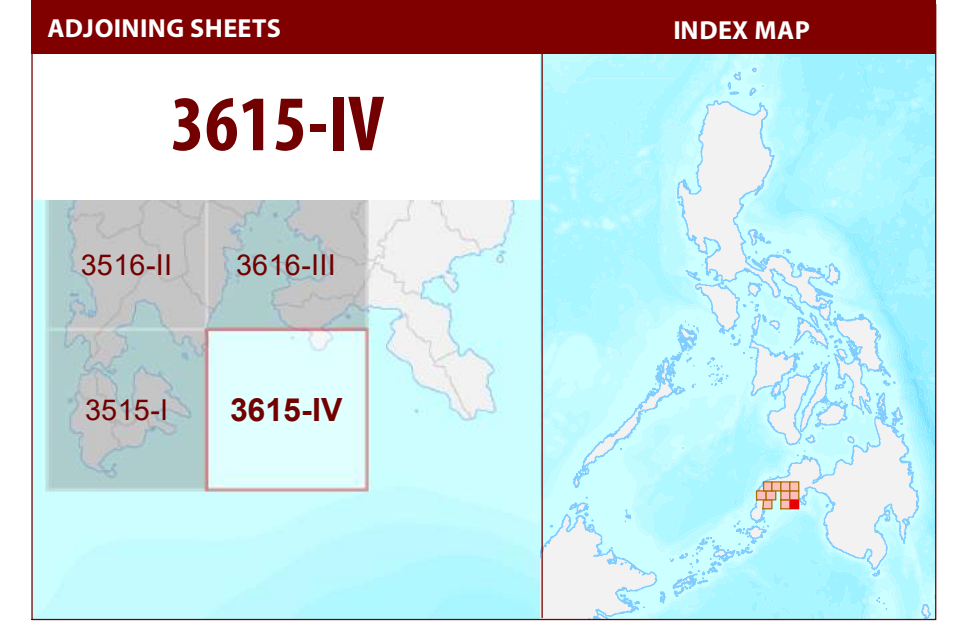
- NGP Areas
- Cacao
- Land limitation
- Land use

CONVENTIONAL SIGNS

ROADS	BOUNDARY	HYDROLOGY
Expressway	Region	Sea / Shoreline
Trunk line	Province	Lakes / Rivers
Primary	District	PLACES
Secondary	Municipality	Capital City / City
Tertiary	Barangay	Capital Town / Town

LAND USE

- Built-up
- Fishpond
- Mangrove



MISCELLANEOUS INFORMATION

SOURCES OF INFORMATION : Topographic information taken from NAMRIA Topographic Map at 1:50,000 scale. Land resources information from the Agricultural Land Management and Evaluation Division (ALMED), Soils Survey Division (SSD) and Laboratory Services Division (LSD) of BSWM. Rice areas obtained from the Land Use System (FAO, 2015) and Philippine Rice Information System (PRISM) (IRRI, 2015). Data analysis and compilation through the **Land Resources Evaluation and Suitability Assessment of Strategic Production Areas for Major Commodities Project** implemented by BSWM (2017).

Project Leader : BERNARDO B. PASCUA
 GIS and Cartography : IRWIN K. SAMALCA

Funding Agency : Department of Agriculture - Bureau of Agricultural Research (DA-BAR)
 Collaborating Agencies : Philippine Council on Agriculture and Fisheries (PCAF)
 : Department of Agriculture and Fisheries - ARMM, Department of Agriculture Regional Field Office of Region IX, X, XI, XII and XIII (Caraga)
 : Local Government Unit (LGU) of covered provinces and municipalities

Map produced by the Geomatics and Soil Information Technology Division, Bureau of Soils and Water Management (BSWM).
 Users noting errors or omissions in this publication are requested to inform the Bureau of Soils and Water Management.

This publication is licensed under a Creative Commons Attribution 4.0 International License. Unless otherwise noted, copyright and any other intellectual property rights, in this publication is owned by the Philippine Government. This publication should be attributed as:
 BSWM, 2019. *Land Suitability Map Series for Rubber of the PROVINCE OF ZAMBOANGA SIBUGAY (50,000 Scale)*. CC BY NC SA 4.0.

REPUBLIC OF THE PHILIPPINES
DEPARTMENT OF AGRICULTURE
BUREAU OF SOILS AND WATER MANAGEMENT
 SRDC Bldg, Elliptical Road Cor. Visayas Avenue, Diliman, Quezon City 1101
 Tel/Fax No.:(+632) 332-9534 E-mail: bswmcenter@da.gov.ph

PROVINCE OF ZAMBOANGA SIBUGAY Sheet 11 of 11 Sheet No. 3615-IV