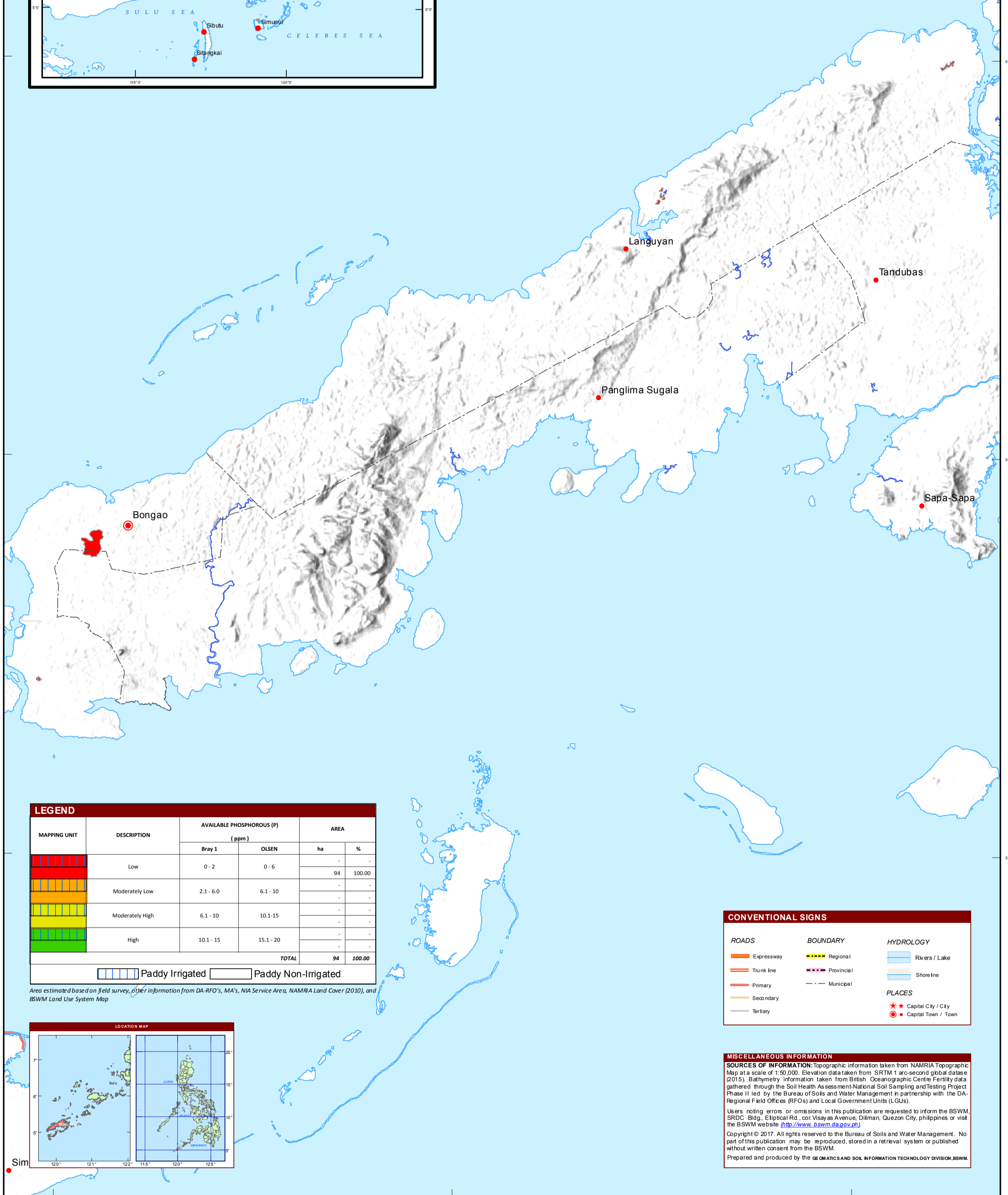


REPUBLIC OF THE PHILIPPINES
DEPARTMENT OF AGRICULTURE
BUREAU OF SOILS AND WATER MANAGEMENT
Elliptical Road Cor. Visayas Ave., Diliman, Quezon City

NUTRIENT STATUS MAP : PHOSPHOROUS
(Key Rice Areas)
PROVINCE OF TAWI-TAWI

SCALE 1:135,000

Projection : Transverse Mercator
Datum : PRS 1992
DISCLAIMER : All political boundaries are not authoritative

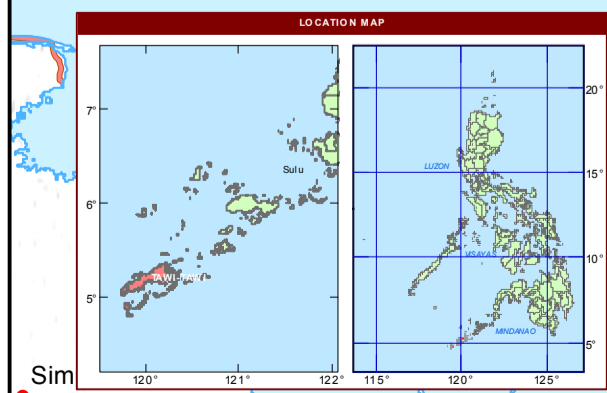


LEGEND

MAPPING UNIT	DESCRIPTION	AVAILABLE PHOSPHOROUS (P) (ppm)		AREA	
		Bray 1	OLSEN	ha	%
[Red]	Low	0 - 2	0 - 6	-	-
[Orange]	Moderately Low	2.1 - 6.0	6.1 - 10	94	100.00
[Yellow]	Moderately High	6.1 - 10	10.1 - 15	-	-
[Green]	High	10.1 - 15	15.1 - 20	-	-
TOTAL				94	100.00

Paddy Irrigated
 Paddy Non-Irrigated

Area estimated based on field survey, other information from DA-RFO's, MA's, NIA Service Area, NAMRIA Land Cover (2010), and BSWM Land Use System Map



CONVENTIONAL SIGNS

ROADS	BOUNDARY	HYDROLOGY
Expressway	Regional	Rivers / Lake
Trunk line	Provincial	Shoreline
Primary	Municipal	PLACES
Secondary		★ Capital City / City
Tertiary		● Capital Town / Town

MISCELLANEOUS INFORMATION

SOURCES OF INFORMATION: Topographic information taken from NAMRIA Topographic Map at a scale of 1:50,000. Elevation data taken from SRTM 1 arc-second global dataset (2015). Bathymetry information taken from British Oceanographic Centre Fertility data gathered through the Soil Health Assessment-National Soil Sampling and Testing Project Phase II led by the Bureau of Soils and Water Management in partnership with the DA-Regional Field Offices (RFOs) and Local Government Units (LGUs).

Users noting errors or omissions in this publication are requested to inform the BSWM, SRDC Bldg., Elliptical Rd., cor. Visayas Avenue, Diliman, Quezon City, Philippines or visit the BSWM website (<http://www.bswm.dag.gov.ph>).

Copyright © 2017. All rights reserved to the Bureau of Soils and Water Management. No part of this publication may be reproduced, stored in a retrieval system or published without written consent from the BSWM.

Prepared and produced by the GEOMATICS AND SOIL INFORMATION TECHNOLOGY DIVISION, BSWM.