
REPUBLIC OF THE PHILIPPINES
DEPARTMENT OF AGRICULTURE
BUREAU OF SOILS AND WATER MANAGEMENT
 Elliptical Road Cor. Visayas Ave., Diliman, Quezon City

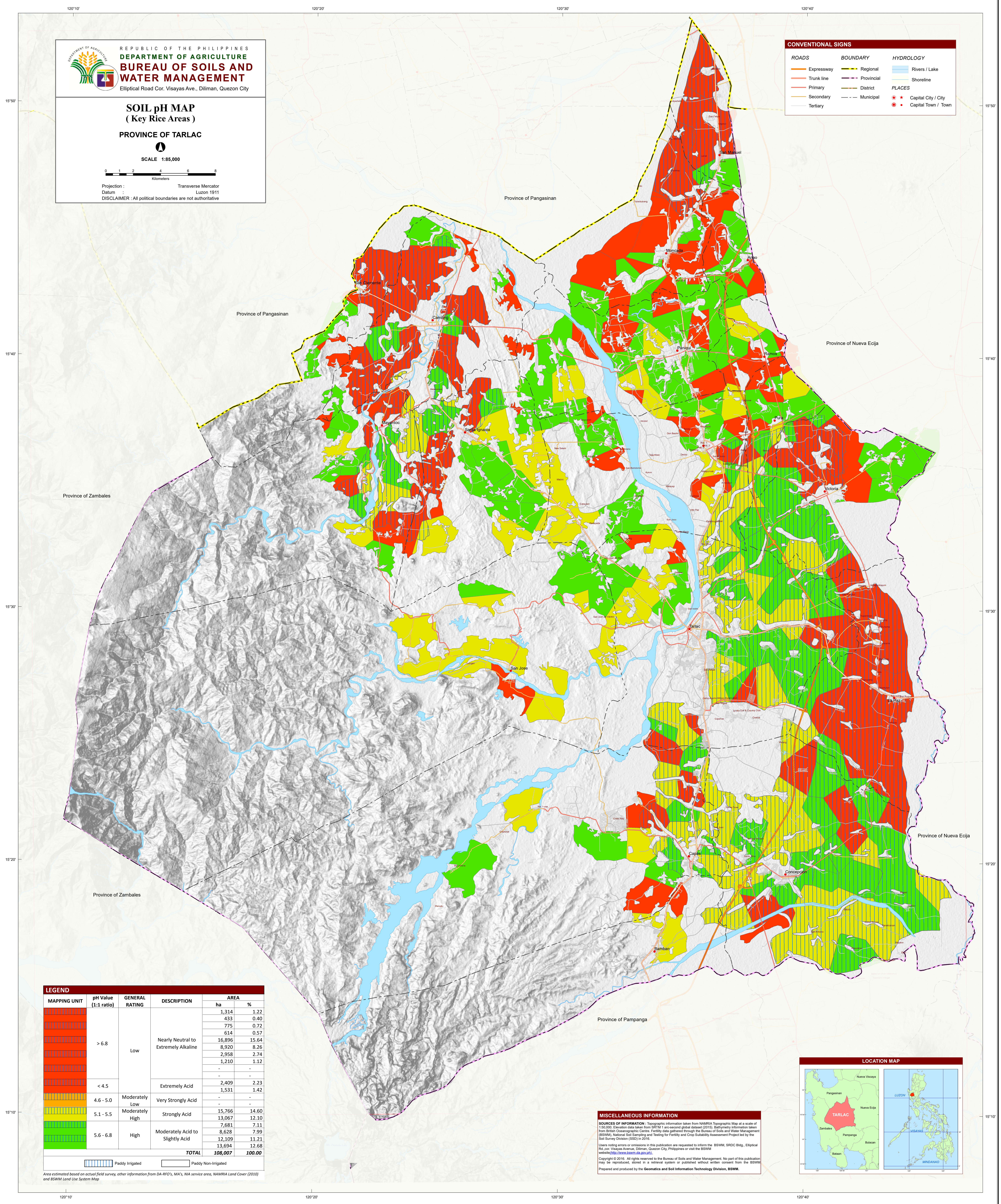
SOIL pH MAP
(Key Rice Areas)
PROVINCE OF TARLAC

SCALE 1:85,000

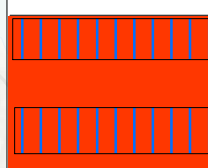
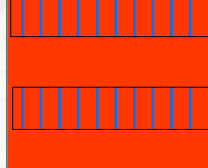
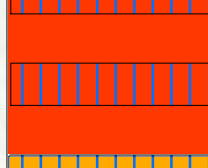
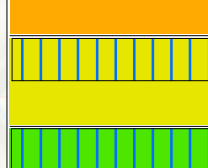
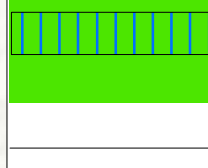
Projection : Transverse Mercator
 Datum : Luzon 1911
 DISCLAIMER : All political boundaries are not authoritative


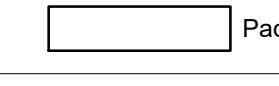
CONVENTIONAL SIGNS

ROADS	BOUNDARY	HYDROLOGY
Expressway	Regional	Rivers / Lake
Trunk line	Provincial	Shoreline
Primary	District	PLACES
Secondary	Municipal	Capital City / City
Tertiary		Capital Town / Town



LEGEND

MAPPING UNIT	pH Value (1:1 ratio)	GENERAL RATING	DESCRIPTION	AREA	
				ha	%
	> 6.8	Low	Nearly Neutral to Extremely Alkaline	1,314	1.22
				433	0.40
				775	0.72
				614	0.57
				16,896	15.64
				8,920	8.26
	4.6 - 5.0	Moderately Low	Very Strongly Acid	2,958	2.74
				1,210	1.12
	< 4.5	Moderately High	Extremely Acid	2,409	2.23
				1,531	1.42
	5.1 - 5.5	High	Moderately Acid to Slightly Acid	15,766	14.60
				13,067	12.10
	5.6 - 6.8	High	Moderately Acid to Slightly Acid	7,681	7.11
				8,628	7.99
				12,109	11.21
				13,594	12.68
TOTAL				108,007	100.00

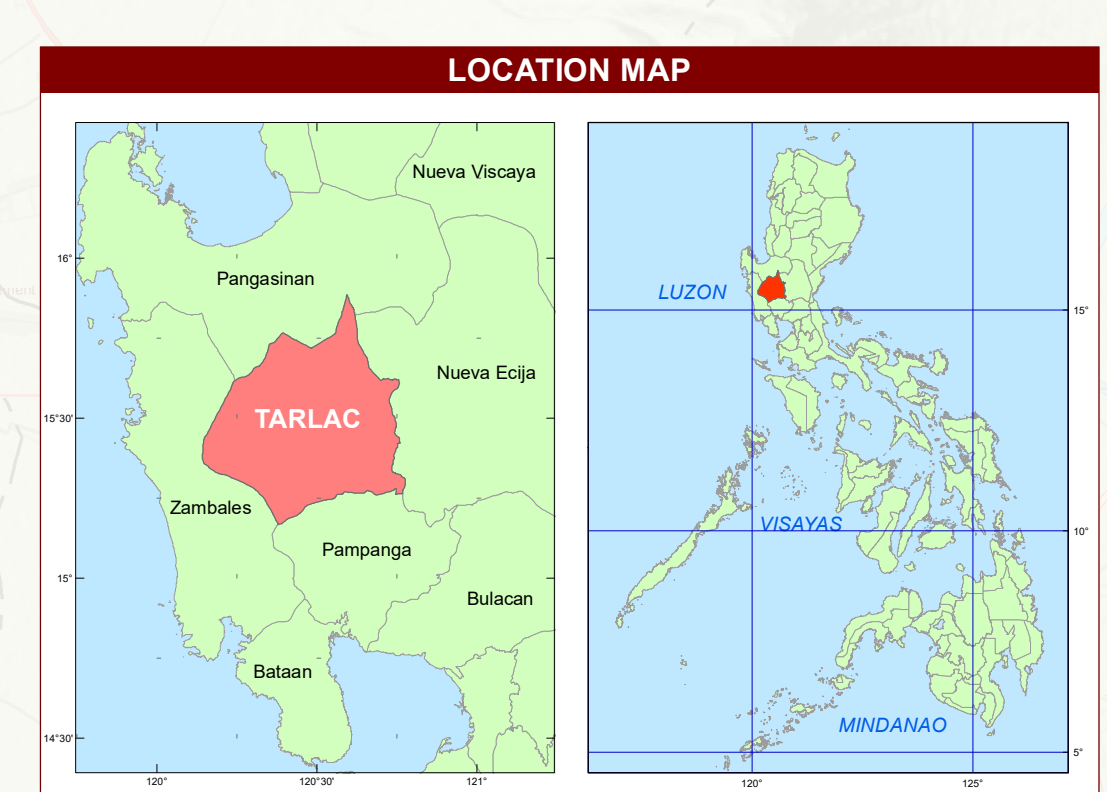
 Paddy Irrigated
 Paddy Non-Irrigated

MISCELLANEOUS INFORMATION

SOURCES OF INFORMATION: Topographic information taken from NAMRIA Topographic Map at a scale of 1:50,000. Elevation data taken from SRTM 1 arc-second global dataset (2015). Bathymetry information taken from Bathymetric Charting Centre. Fertility data gathered through the Bureau of Soils and Water Management (BSWM) National Soil Sampling and Testing for Fertility and Crop Suitability Assessment Project led by the Soil Survey Division (SSD) in 2016.

Users noting errors or omissions in this publication are requested to inform the BSWM, SRDC Bldg., Elliptical Rd. cor. Visayas Avenue, Diliman, Quezon City, Philippines or visit the BSWM website (www.bswm.da.gov.ph).

Copyright © 2016. All rights reserved to the Bureau of Soils and Water Management. No part of this publication may be reproduced, stored in a retrieval system or published without written consent from the BSWM. Prepared and produced by the Geomatics and Soil Information Technology Division, BSWM.



Area estimated based on actual field survey, other information from DA-RFO's, MA's, NIA service area, NAMRIA Land Cover (2010) and BSWM Land Use System Map