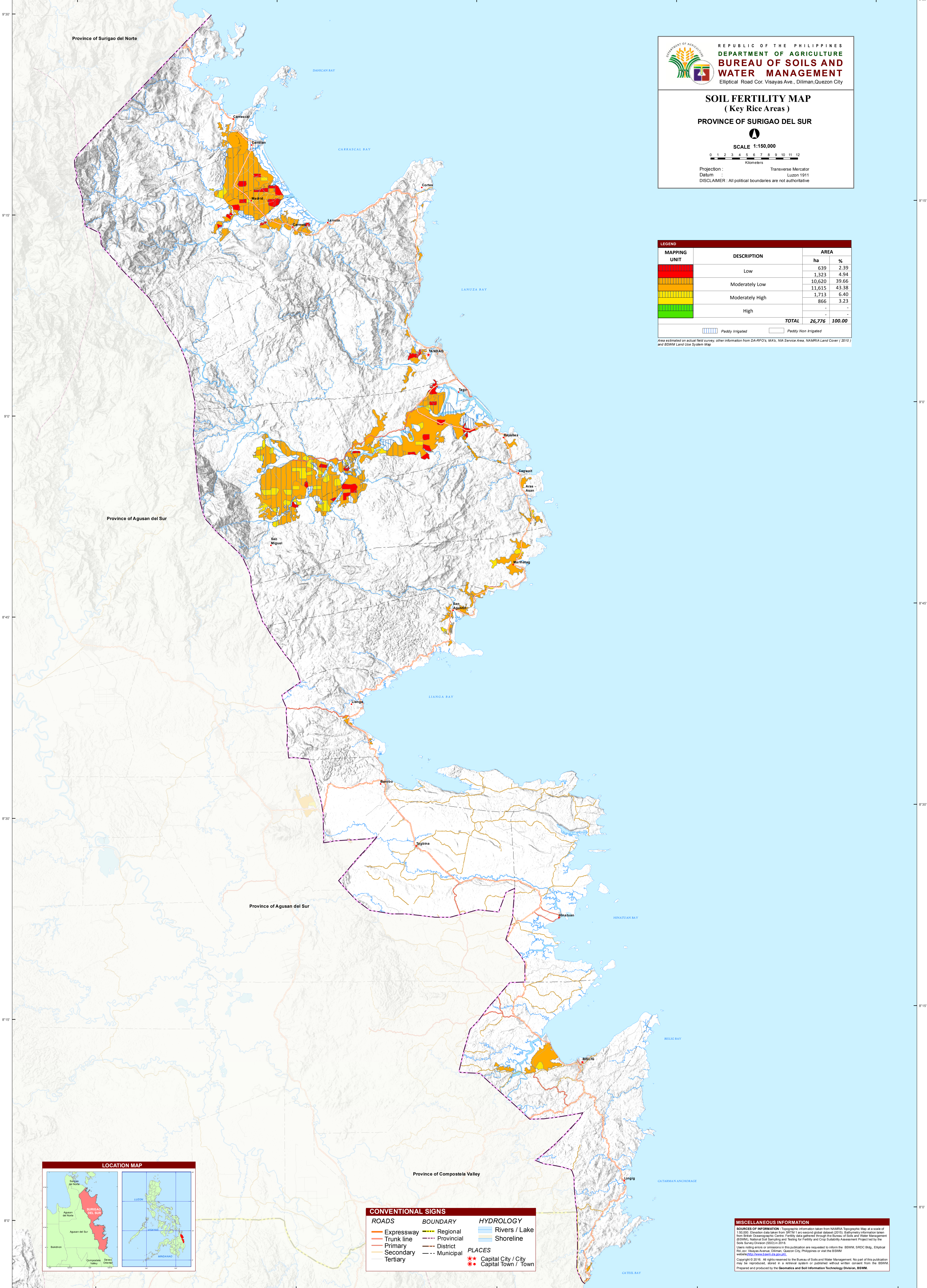



125°45' 126°0' 126°15' 126°30' 126°45'




REPUBLIC OF THE PHILIPPINES
DEPARTMENT OF AGRICULTURE
BUREAU OF SOILS AND WATER MANAGEMENT
 Elliptical Road Cor. Visayas Ave., Diliman, Quezon City



SOIL FERTILITY MAP
(Key Rice Areas)
PROVINCE OF SURIGAO DEL SUR

SCALE 1:150,000
 0 1 2 3 4 5 6 7 8 9 10 11 12
 Kilometers

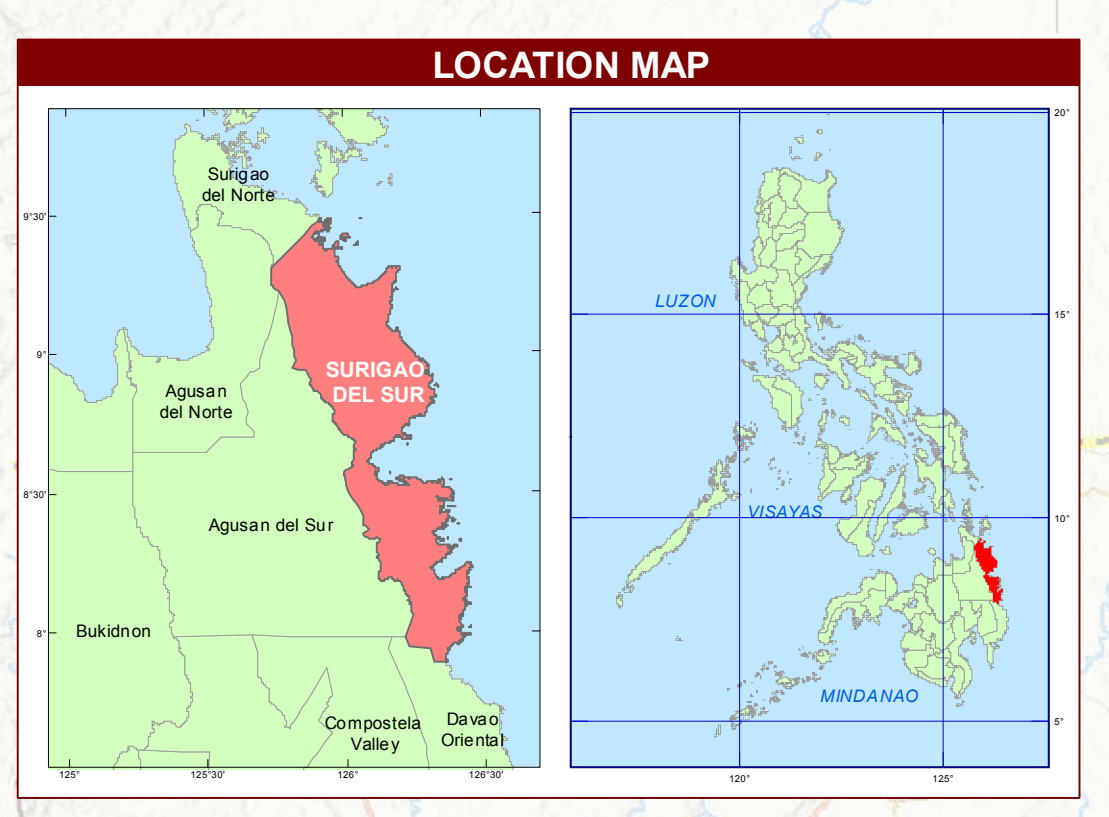
Projection : Transverse Mercator
 Datum : Luzon 1911
 DISCLAIMER : All political boundaries are not authoritative

LEGEND

MAPPING UNIT	DESCRIPTION	AREA	
		ha	%
[Red Box]	Low	639	2.39
		1,323	4.94
[Orange Box]	Moderately Low	10,620	39.66
		11,615	43.38
[Yellow Box]	Moderately High	1,713	6.40
		866	3.23
[Green Box]	High	-	-
TOTAL		26,776	100.00

 Paddy Irrigated
  Paddy Non Irrigated

Area estimated on actual field survey; other information from DA-RFO's, MAV, NA Service Area, NAMRIA Land Cover (2010) and BSWM Land Use System Map



CONVENTIONAL SIGNS

ROADS	BOUNDARY	HYDROLOGY
Expressway	Regional	Rivers / Lake
Trunk line	Provincial	Shoreline
Primary	District	
Secondary	Municipal	
Tertiary		
	PLACES	
	★ Capital City / City	
	● Capital Town / Town	

MISCELLANEOUS INFORMATION

SOURCES OF INFORMATION: Topographic information taken from NAMRIA Topographic Map at a scale of 1:50,000. Elevation data taken from SRTM30+ arc-second global dataset (2010). Bathymetry information taken from SIO, Oceanographic Data. Fertility data gathered through the Bureau of Soils and Water Management (BSWM), National Soil Sampling and Testing for Fertility and Crop Suitability Assessment Project by the Soil Survey Division (SSD) in 2016.

Users noting errors or omissions in this publication are requested to inform the BSWM, ERDC Bldg., Elliptical Road Cor. Visayas Avenue, Diliman, Quezon City, Philippines or visit the BSWM website: www.bswm.gov.ph.

Copyright © 2016. All rights reserved to the Bureau of Soils and Water Management. No part of this publication may be reproduced, stored in a retrieval system or published without written consent from the BSWM. Prepared and produced by the Geomatics and Soil Information Technology Division, BSWM.

125°45' 126°0' 126°15' 126°30' 126°45'