
**REPUBLIC OF THE PHILIPPINES**  
**DEPARTMENT OF AGRICULTURE**  
**BUREAU OF SOILS AND WATER MANAGEMENT**  
 Elliptical Road Cor. Visayas Ave., Diliman, Quezon City

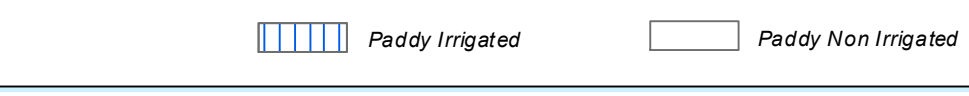
**NUTRIENT STATUS MAP: PHOSPHORUS**  
**(Key Rice Areas)**  
**PROVINCE OF SURIGAO DEL SUR**

SCALE 1:150,000  
 0 1 2 3 4 5 6 7 8 9 10 11 12  
 Kilometers

Projection : Transverse Mercator  
 Datum : Luzon 1911  
 DISCLAIMER : All political boundaries are not authoritative

**LEGEND**

MAPPING UNIT	DESCRIPTION	AVAILABLE PHOSPHORUS ( P ) (ppm)		AREA	
		OLSEN	Bray 1	ha	%
Low	0-2	0-10	7,092	26.49	
			8,131	30.37	
Moderately Low	2.1-6.0	10.1-15	1,394	5.21	
			1,208	4.51	
Moderately High	6.1-10	15.1-20	3,842	14.35	
			4,272	15.95	
High	10.1-15	20.1-30	644	2.41	
			193	0.72	
<b>TOTAL</b>			<b>26,776</b>	<b>100.00</b>	


 Paddy Irrigated      Paddy Non Irrigated

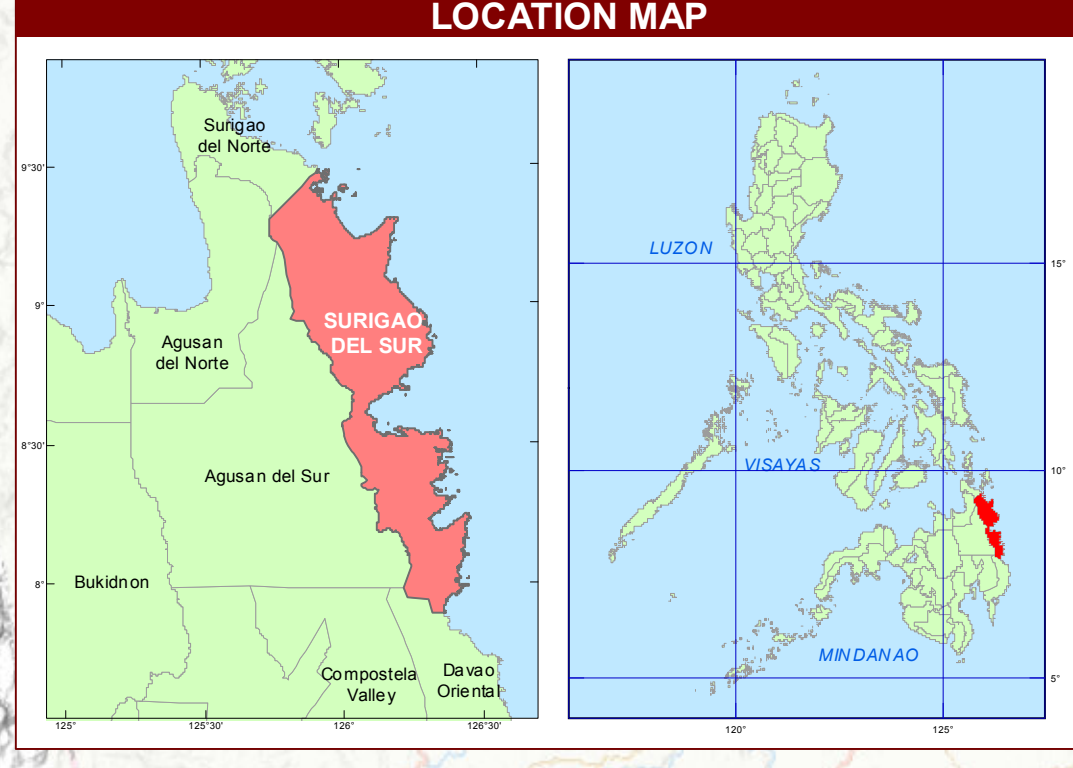
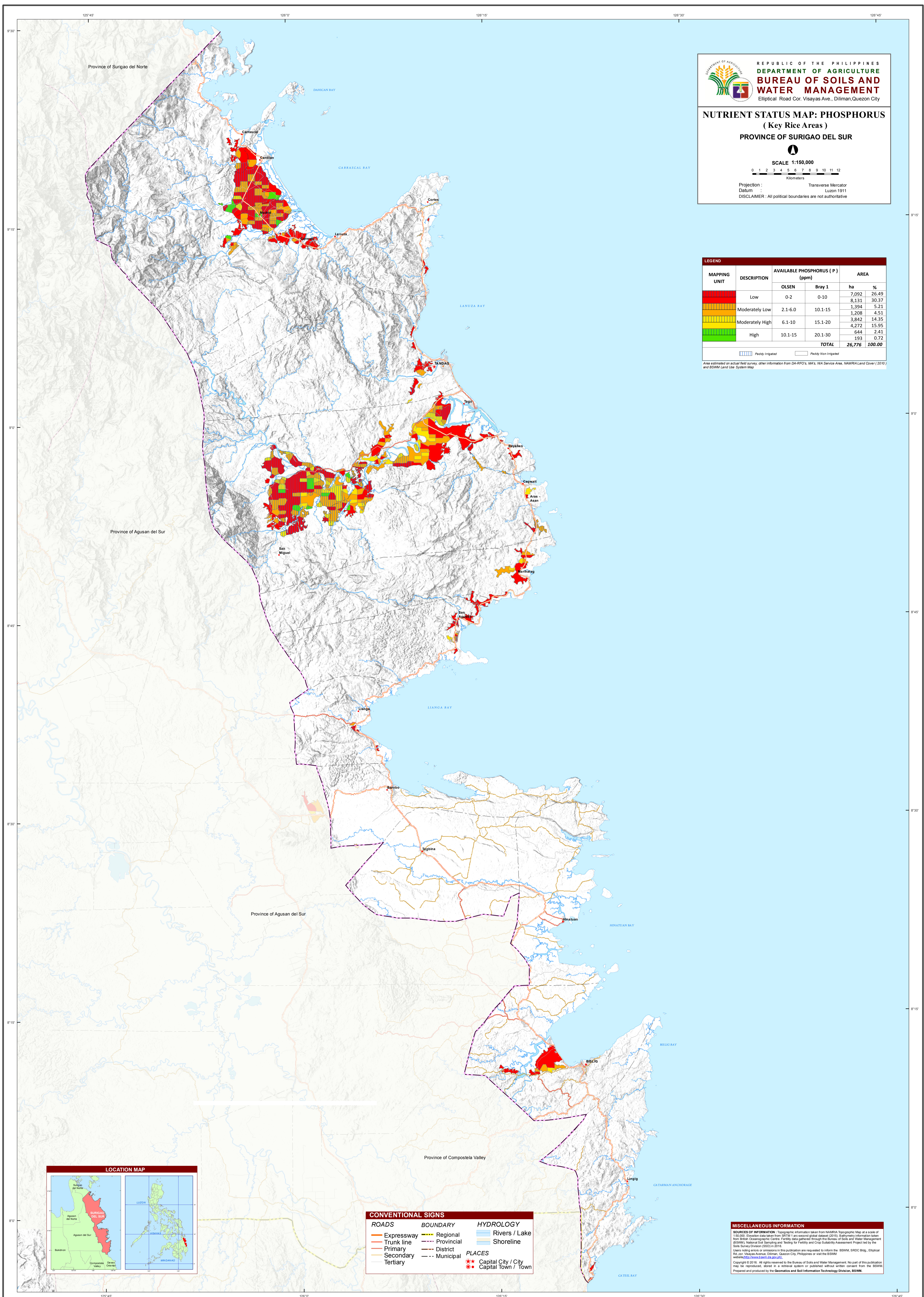
Area estimated on actual field survey, other information from DA-RFO's, MA's, NA Service Area, NAMRIA Land Cover (2010) and BSWM Land Use System Map

**MISCELLANEOUS INFORMATION**

SOURCES OF INFORMATION : Topographic information taken from NAMRIA Topographic Map at a scale of 1:50,000. Elevation data taken from SRTM 1 arc-second global dataset (2010). Bathymetry information taken from 90m Grid Oceanographic Data. Field data gathered through the Bureau of Soils and Water Management (BSWM) National Soil Sampling and Testing for Fertility and Crop Sustainability Assessment Project led by the Soil Survey Division (SSD) in 2016.

Users noting errors or omissions in this publication are requested to inform the BSWM, SRDC Bldg., Elliptical Rd. Cor. Visayas Avenue, Diliman, Quezon City, Philippines or visit the BSWM website: [www.bswm.gov.ph](http://www.bswm.gov.ph)

Copyright © 2016. All rights reserved to the Bureau of Soils and Water Management. No part of this publication may be reproduced, stored in a retrieval system or published without written consent from the BSWM. Prepared and produced by the Geomatics and Soil Information Technology Division, BSWM.



**CONVENTIONAL SIGNS**

Expressway	Regional	Rivers / Lake
Trunk line	Provincial	Shoreline
Primary	District	
Secondary	Municipal	
Tertiary		

**PLACES**  
 Capital City / City  
 Capital Town / Town