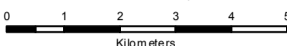
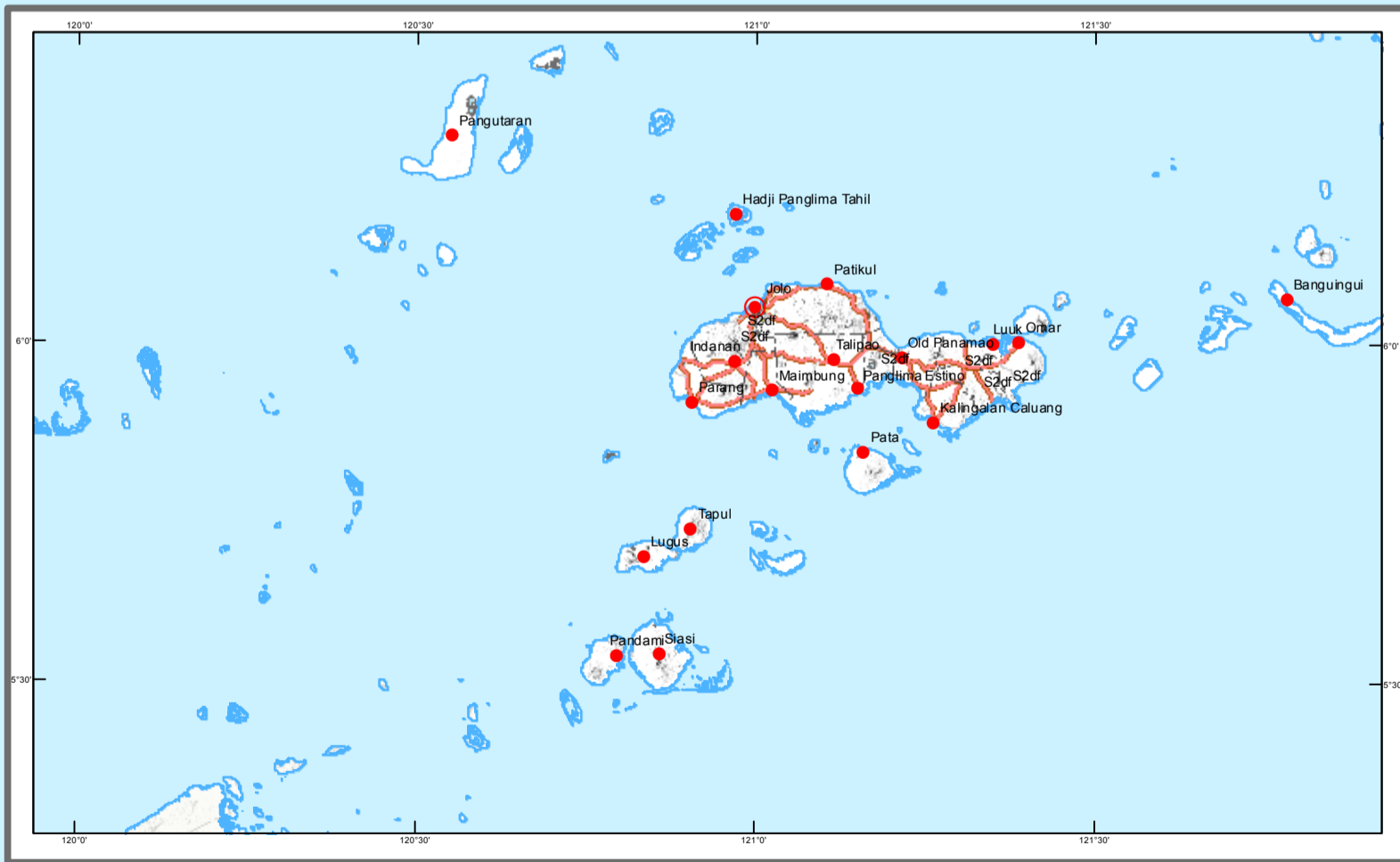

REPUBLIC OF THE PHILIPPINES
DEPARTMENT OF AGRICULTURE
BUREAU OF SOILS AND WATER MANAGEMENT
 Elliptical Road Cor. Visayas Ave., Diliman, Quezon City

NUTRIENT STATUS MAP : PHOSPHOROUS
(Key Rice Areas)
PROVINCE OF SULU

SCALE 1:135,000


Projection : Transverse Mercator
 Datum : PRS 1992
 DISCLAIMER : All political boundaries are not authoritative



LEGEND

| MAPPING UNIT | DESCRIPTION | AVAILABLE PHOSPHOROUS (P) (ppm) | | AREA | |
|--------------|-----------------|------------------------------------|-----------|------|--------|
| | | Bray 1 | OLSEN | ha | % |
| | Low | 0 - 2 | 0 - 6 | - | - |
| | Moderately Low | 2.1 - 6.0 | 6.1 - 10 | - | - |
| | Moderately High | 6.1 - 10 | 10.1 - 15 | - | - |
| | High | 10.1 - 15 | 15.1 - 20 | - | - |
| TOTAL | | | | 120 | 100.00 |

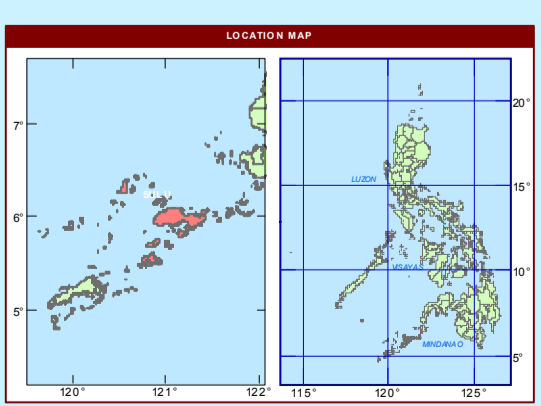
Paddy Irrigated
 Paddy Non-Irrigated

Area estimated based on field survey, other information from DA-RDO's, MA's, NIA Service Area, NAMRIA Land Cover (2010), and BSWM Land Use System Map.

CONVENTIONAL SIGNS

| ROADS | BOUNDARY | HYDROLOGY |
|------------|------------|---------------|
| Expressway | Regional | Rivers / Lake |
| Trunk line | Provincial | Shoreline |
| Primary | Municipal | |
| Secondary | | |
| Tertiary | | |

PLACES
 Capital City / Cty
 Capital Town / Town



MISCELLANEOUS INFORMATION

SOURCES OF INFORMATION: Topographic information taken from NAMRIA Topographic Map at a scale of 1:50,000. Elevation data taken from SRTM 1 arc-second global dataset (2015). Bathymetry information taken from British Oceanographic Centre Fertility data gathered through the Soil Health Assessment-National Soil Sampling and Testing Project Phase II led by the Bureau of Soils and Water Management in partnership with the DA-Regional Field Offices (RFOs) and Local Government Units (LGUs).

Users noting errors or omissions in this publication are requested to inform the BSWM, SRDC Bldg., Elliptical Rd., cor. Visayas Avenue, Diliman, Quezon City, Philippines or visit the BSWM website (<http://www.bswm.dag.gov.ph>).

Copyright © 2017. All rights reserved to the Bureau of Soils and Water Management. No part of this publication may be reproduced, stored in a retrieval system or published without written consent from the BSWM.

Prepared and produced by the **GEOMATICS AND SOIL INFORMATION TECHNOLOGY DIVISION, BSWM.**