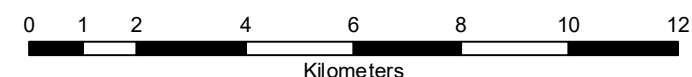


**NUTRIENT STATUS MAP : NITROGEN**  
**( Key Rice Areas )**

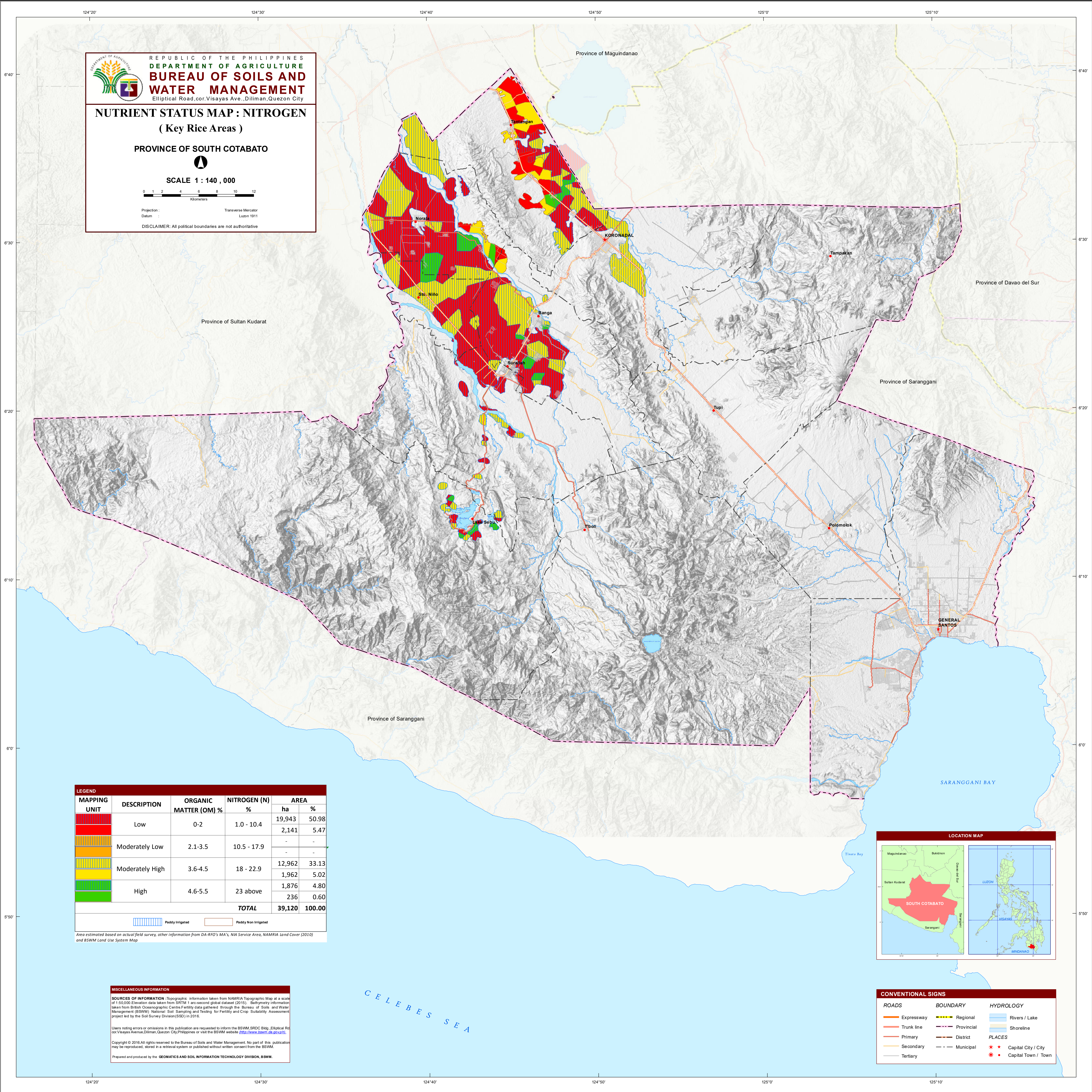
**PROVINCE OF SOUTH COTABATO**



**SCALE 1 : 140 , 000**



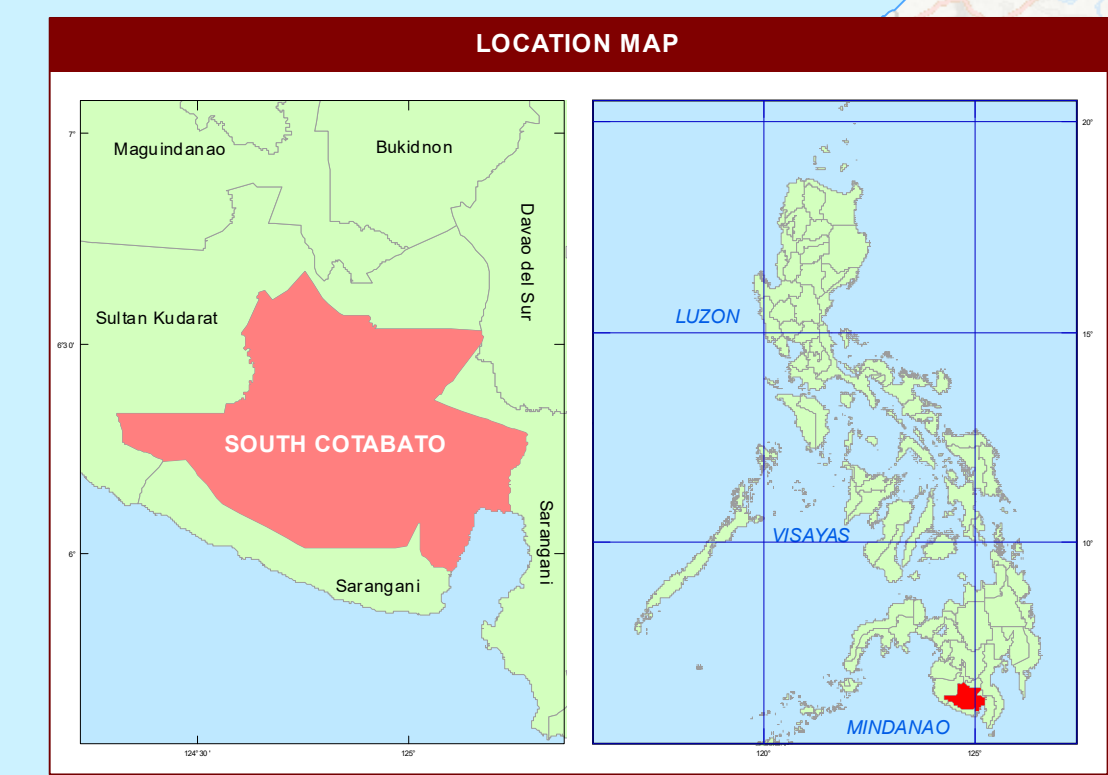
Projection : Transverse Mercator  
 Datum : Luzon 1911  
 DISCLAIMER: All political boundaries are not authoritative



LEGEND					
MAPPING UNIT	DESCRIPTION	ORGANIC MATTER (OM) %	NITROGEN (N) %	AREA	
Low		0-2	1.0 - 10.4	19,943	50.98
				2,141	5.47
Moderately Low		2.1-3.5	10.5 - 17.9	-	-
				-	-
Moderately High		3.6-4.5	18 - 22.9	12,962	33.13
				1,962	5.02
High		4.6-5.5	23 above	1,876	4.80
				236	0.60
<b>TOTAL</b>				<b>39,120</b>	<b>100.00</b>

Area estimated based on actual field survey, other information from DA-RFO's MA's, NIA Service Area, NAMRIA Land Cover (2010) and BSWM Land Use System Map

**MISCELLANEOUS INFORMATION**  
**SOURCES OF INFORMATION** : Topographic information taken from NAMRIA Topographic Map at a scale of 1:50,000. Elevation data taken from SRTM 1 arc-second global dataset (2015). Bathymetry information taken from British Oceanographic Centre Fertility data gathered through the Bureau of Soils and Water Management (BSWM) National Soil Sampling and Testing for Fertility and Crop Suitability Assessment project led by the Soil Survey Division (SSD) in 2016.  
 Users noting errors or omissions in this publication are requested to inform the BSWM SRDC Bldg, Elliptical Road, Visayas Avenue, Diliman, Quezon City, Philippines or visit the BSWM website (<http://www.bsww.gov.ph>).  
 Copyright © 2016. All rights reserved to the Bureau of Soils and Water Management. No part of this publication may be reproduced, stored in a retrieval system or published without written consent from the BSWM.  
 Prepared and produced by the **GEOMATICS AND SOIL INFORMATION TECHNOLOGY DIVISION, BSWM.**



CONVENTIONAL SIGNS		
ROADS	BOUNDARY	HYDROLOGY
Expressway	Regional	Rivers / Lake
Trunk line	Provincial	Shoreline
Primary	District	PLACES
Secondary	Municipal	Capital City / City
Tertiary		Capital Town / Town