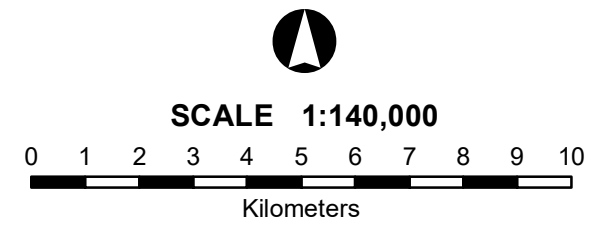




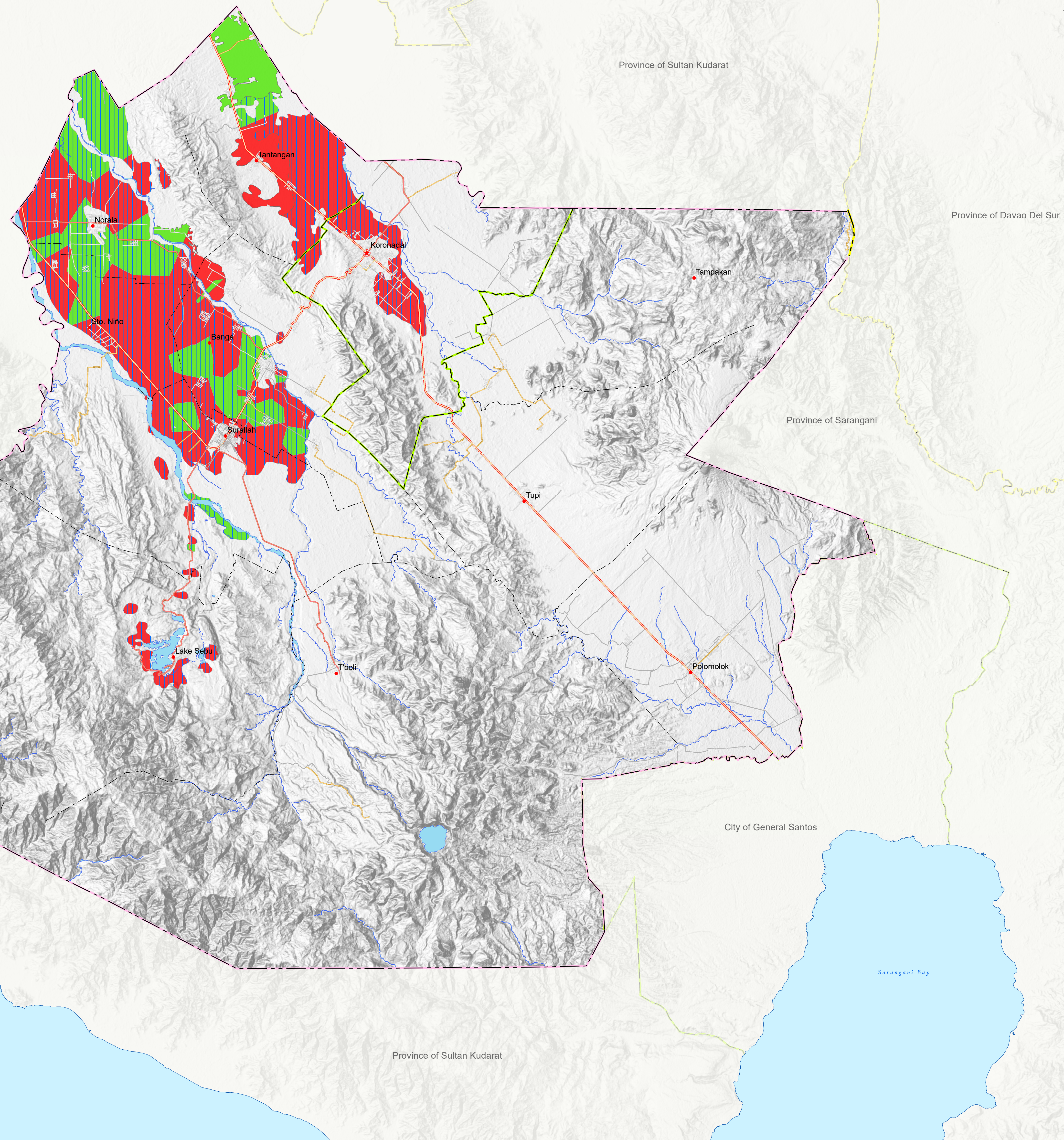
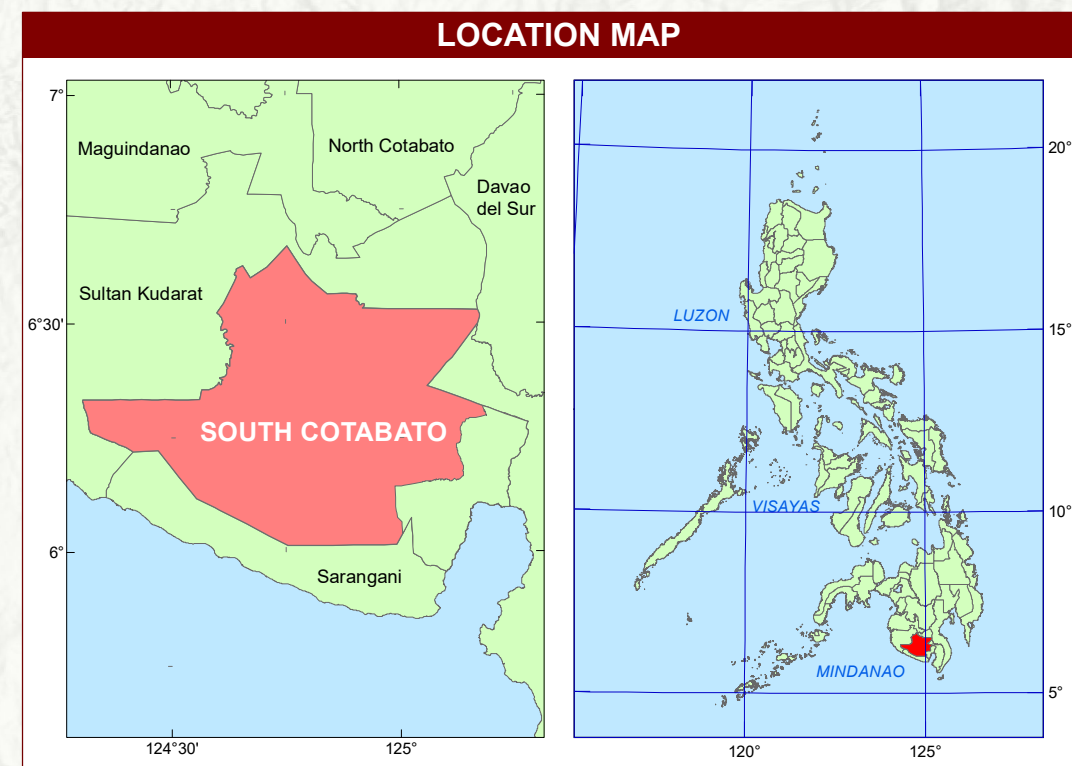
REPUBLIC OF THE PHILIPPINES  
 DEPARTMENT OF AGRICULTURE  
**BUREAU OF SOILS AND WATER MANAGEMENT**  
 Elliptical Road Cor. Visayas Ave., Diliman, Quezon City

**NUTRIENT STATUS MAP : MAGNESIUM**  
 ( Key Rice Areas )

PROVINCE OF SOUTH COTABATO



Projection : Transverse Mercator  
 Datum : PRS 1992  
 DISCLAIMER : All political boundaries are not authoritative



MAPPING UNIT	DESCRIPTION	Exchangeable Mg, cmol/kg	AREA	
			ha	%
	Sufficient	>1.0	10,553	26.98
			2,294	5.86
	Deficient	1.0 and below	24,229	61.94
			2,044	5.22
<b>TOTAL</b>			<b>39,120</b>	<b>100.00</b>

Paddy Irrigated      Paddy Non - irrigated

CONVENTIONAL SIGNS		
	<b>ROADS</b>	
	Expressway	
	Trunk line	
	Primary	
	Secondary	
	Tertiary	
	Residential	
	<b>BOUNDARY</b>	
	Regional	
	Provincial	
	City	
	Municipal	
	<b>HYDROLOGY</b>	
	Rivers / Lake	
	Shoreline	
	<b>PLACES</b>	
	Capital City / City	
	Capital Town / Town	

**MISCELLANEOUS INFORMATION**

**SOURCES OF INFORMATION :** Topographic information taken from NAMRIA Topographic Map at a scale of 1:50,000. Elevation data taken from SRTM 1 arc-second global dataset (2015). Bathymetry information taken from British Oceanographic Centre. Magnesium status data gathered through the Soil Health Assessment National Soil Sampling and Testing Project Phase I led by the Bureau of Soils and Water Management in partnership with the DA-Regional Field Offices (RFOs) and Local Government Units (LGUs) in 2016.

Users noting errors or omissions in this publication are requested to inform the BSWM, SRDC Building, Elliptical Road, corner Visayas Avenue, Diliman, Quezon City, Philippines or visit the BSWM website (<http://www.bswm.da.gov.ph/>).

Copyright © 2018. All rights reserved to the Bureau of Soils and Water Management. No part of this publication may be reproduced, stored in a retrieval system or published without written consent from the BSWM.

Prepared and produced by the Geomatics and Soil Information Technology Division, BSWM.