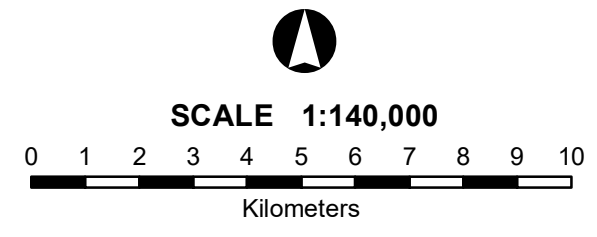




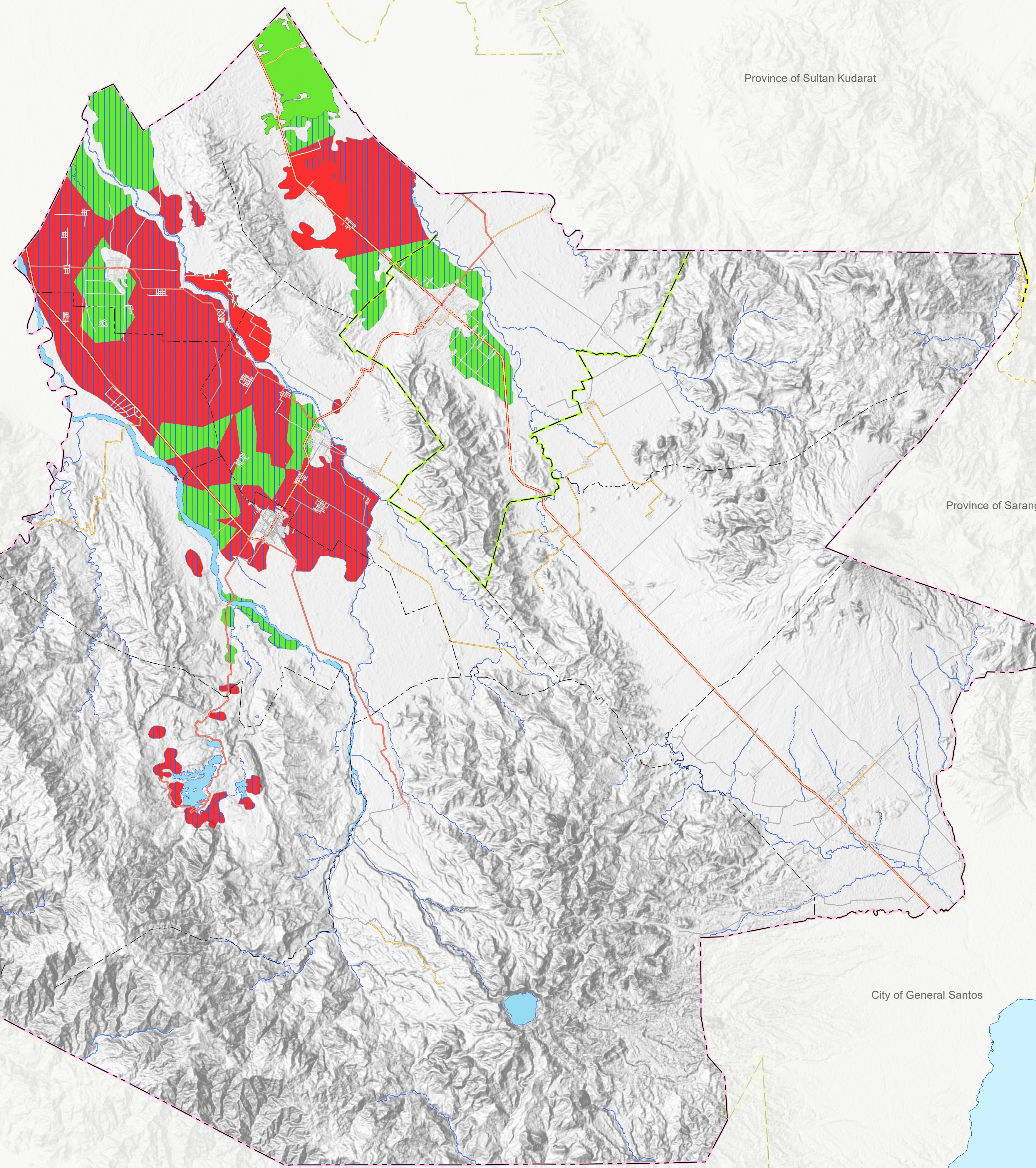
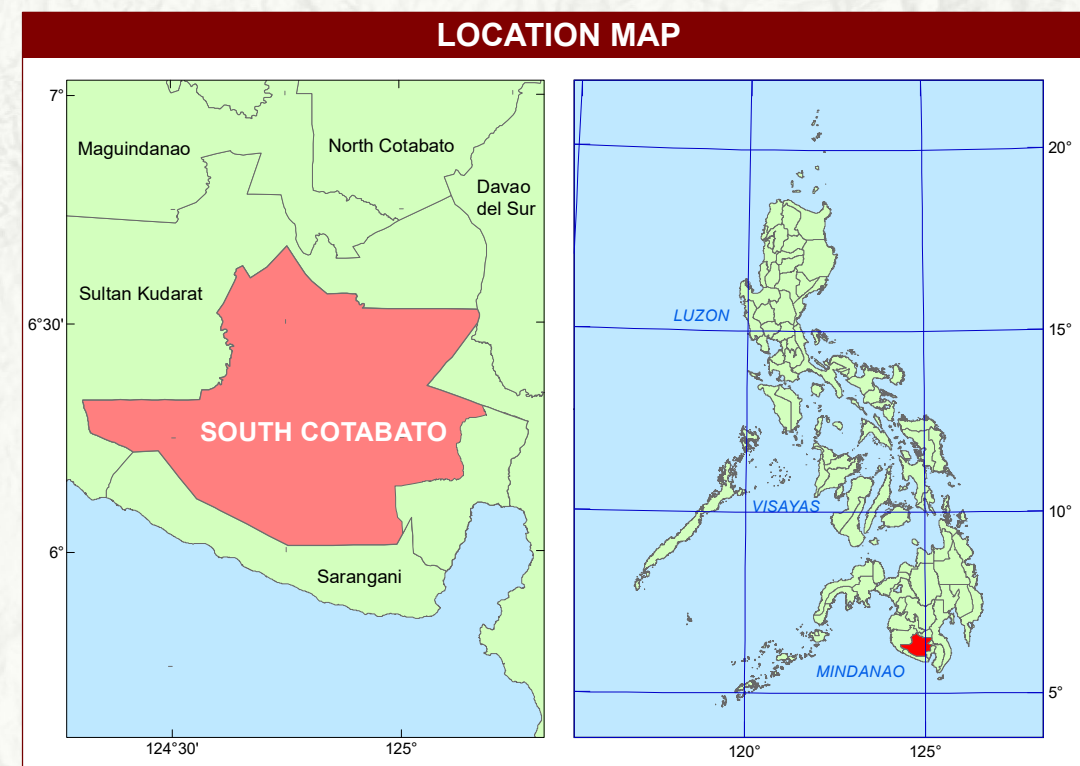
REPUBLIC OF THE PHILIPPINES
 DEPARTMENT OF AGRICULTURE
BUREAU OF SOILS AND WATER MANAGEMENT
 Elliptical Road Cor. Visayas Ave., Diliman, Quezon City

**NUTRIENT STATUS MAP : CALCIUM
 (Key Rice Areas)**

PROVINCE OF SOUTH COTABATO



Projection : Transverse Mercator
 Datum : PRS 1992
 DISCLAIMER : All political boundaries are not authoritative



MAPPING UNIT	DESCRIPTION	Exchangeable Ca, cmol/kg	AREA	
			ha	%
	Sufficient	>2.0	11,460	29.29
			2,020	5.16
	Deficient	2 and below	23,322	59.62
			2,318	5.93
TOTAL			39,120	100.00

Area estimated based on actual field survey, other information from DA-RFO's, MA's NIA Service Area, NAMRIA Land Cover (2010) and BSWM Land Use System Map.

CONVENTIONAL SIGNS		
ROADS	BOUNDARY	HYDROLOGY
Expressway	Regional	Rivers / Lake
Trunk line	Provincial	Shoreline
Primary	City	PLACES
Secondary	Municipal	Capital City / City
Tertiary		Capital Town / Town
Residential		

MISCELLANEOUS INFORMATION

SOURCES OF INFORMATION : Topographic information taken from NAMRIA Topographic Map at a scale of 1:50,000. Elevation data taken from SRTM 1 arc-second global dataset (2010). Bathymetry information taken from British Oceanographic Centre. Calcium status data gathered through the Soil Health Assessment - National Soil Sampling and Testing Project Phase 1 led by the Bureau of Soils and Water Management in partnership with the DA-Regional Field Offices (RFOs) and Local Government Units (LGUs) in 2016.

Users noting errors or omissions in this publication are requested to inform the BSWM SRDC Building, Elliptical Road, corner Visayas Avenue, Diliman, Quezon City, Philippines or visit the BSWM website (<http://www.bswm.da.gov.ph/>).

Copyright © 2018. All rights reserved to the Bureau of Soils and Water Management. No part of this publication may be reproduced, stored in a retrieval system or published without written consent from the BSWM.

Prepared and produced by the Geomatics and Soil Information Technology Division, BSWM.