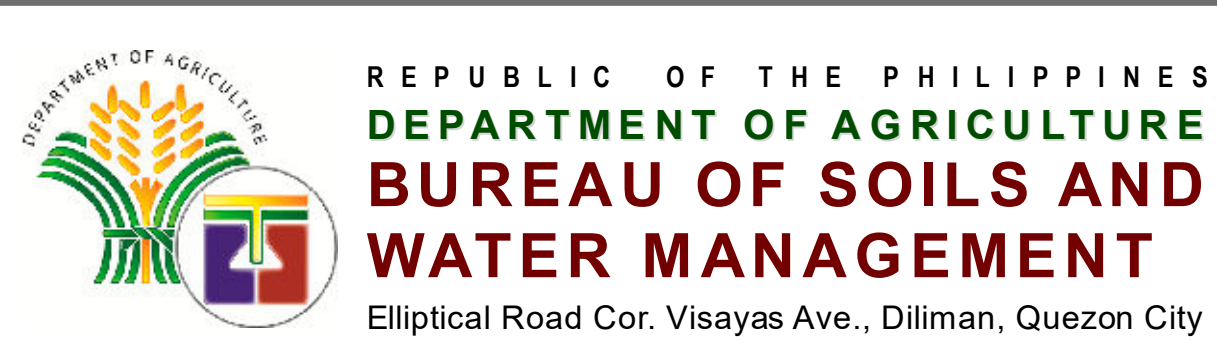
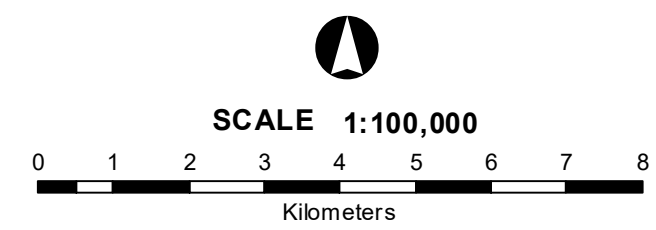


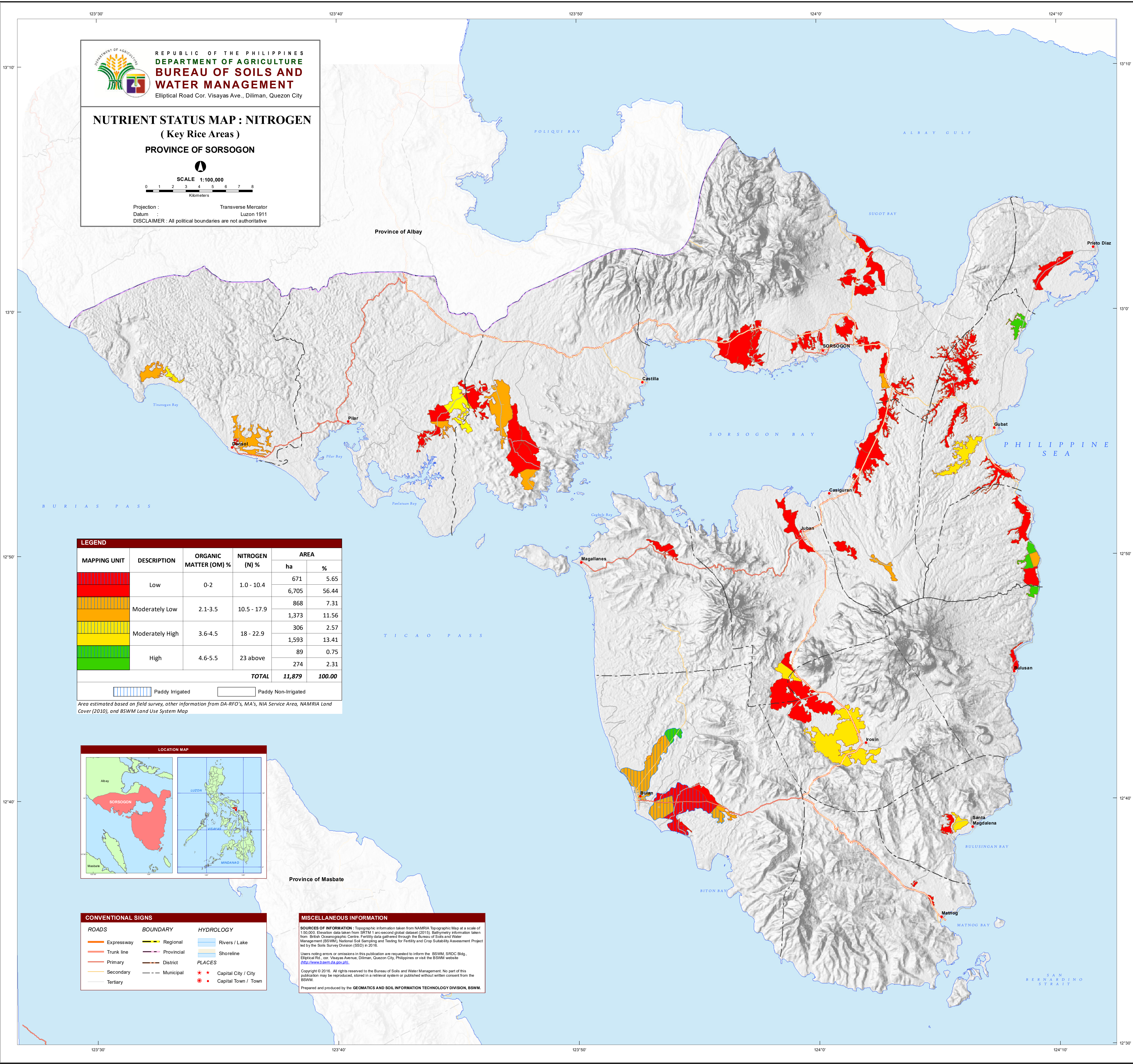
123°30' 123°40' 123°50' 124°0' 124°10'



NUTRIENT STATUS MAP : NITROGEN
(Key Rice Areas)
PROVINCE OF SORSOGON



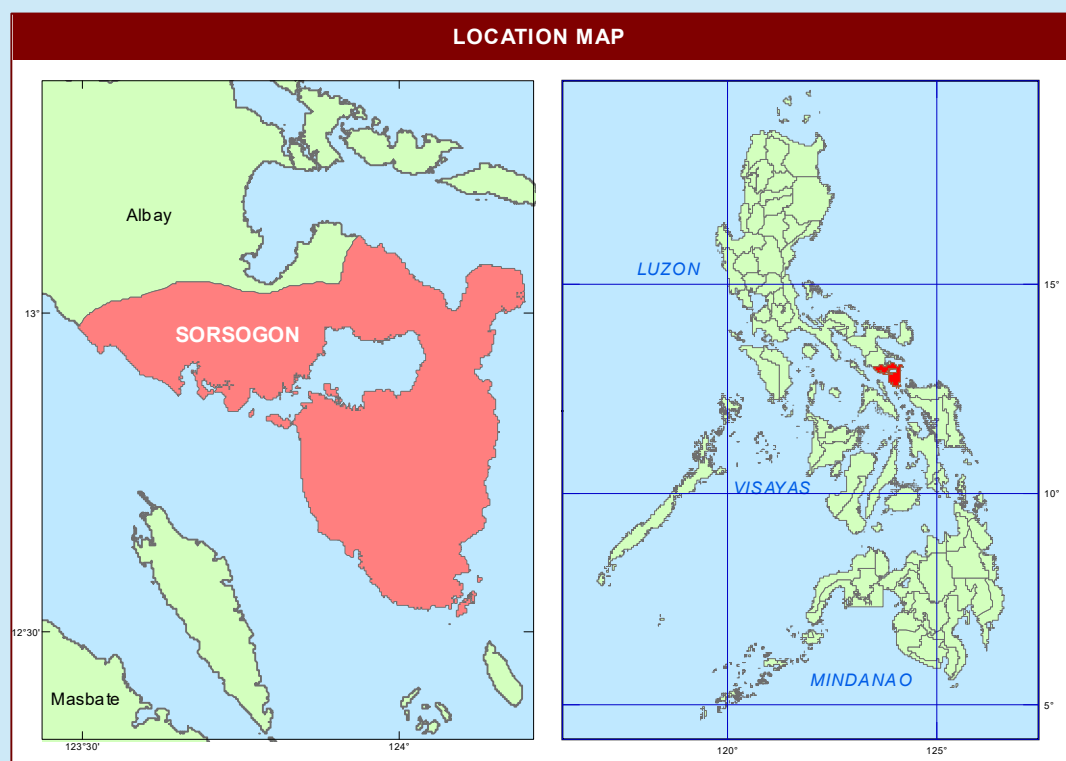
Projection : Transverse Mercator
Datum : Luzon 1911
DISCLAIMER : All political boundaries are not authoritative



MAPPING UNIT	DESCRIPTION	ORGANIC MATTER (OM) %	NITROGEN (N) %	AREA	
				ha	%
Low		0-2	1.0 - 10.4	671	5.65
				6,705	56.44
Moderately Low		2.1-3.5	10.5 - 17.9	868	7.31
				1,373	11.56
Moderately High		3.6-4.5	18 - 22.9	306	2.57
				1,593	13.41
High		4.6-5.5	23 above	89	0.75
				274	2.31
TOTAL				11,879	100.00

Paddy Irrigated Paddy Non-Irrigated

Area estimated based on field survey, other information from DA-RFO's, MA's, NIA Service Area, NAMRIA Land Cover (2010), and BSWM Land Use System Map



CONVENTIONAL SIGNS		
ROADS	BOUNDARY	HYDROLOGY
Expressway	Regional	Rivers / Lake
Trunk line	Provincial	Shoreline
Primary	District	PLACES
Secondary	Municipal	Capital City / City
Tertiary		Capital Town / Town

MISCELLANEOUS INFORMATION

SOURCES OF INFORMATION : Topographic information taken from NAMRIA Topographic Map at a scale of 1:50,000. Elevation data taken from SRTM 1 arc-second global dataset (2015). Bathymetry information taken from British Oceanographic Centre. Fertility data gathered through the Bureau of Soils and Water Management (BSWM), National Soil Sampling and Testing for Fertility and Crop Suitability Assessment Project led by the Soils Survey Division (SSD) in 2016.

Users noting errors or omissions in this publication are requested to inform the BSWM, SRDC Bldg., Elliptical Rd., cor. Visayas Avenue, Diliman, Quezon City, Philippines or visit the BSWM website: <http://www.bswm.da.gov.ph>.

Copyright © 2016. All rights reserved to the Bureau of Soils and Water Management. No part of this publication may be reproduced, stored in a retrieval system or published without written consent from the BSWM.

Prepared and produced by the **GEOMATICS AND SOIL INFORMATION TECHNOLOGY DIVISION, BSWM.**

123°30' 123°40' 123°50' 124°0' 124°10'