
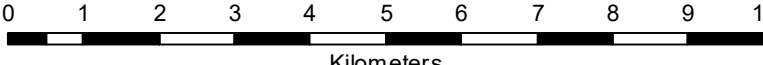
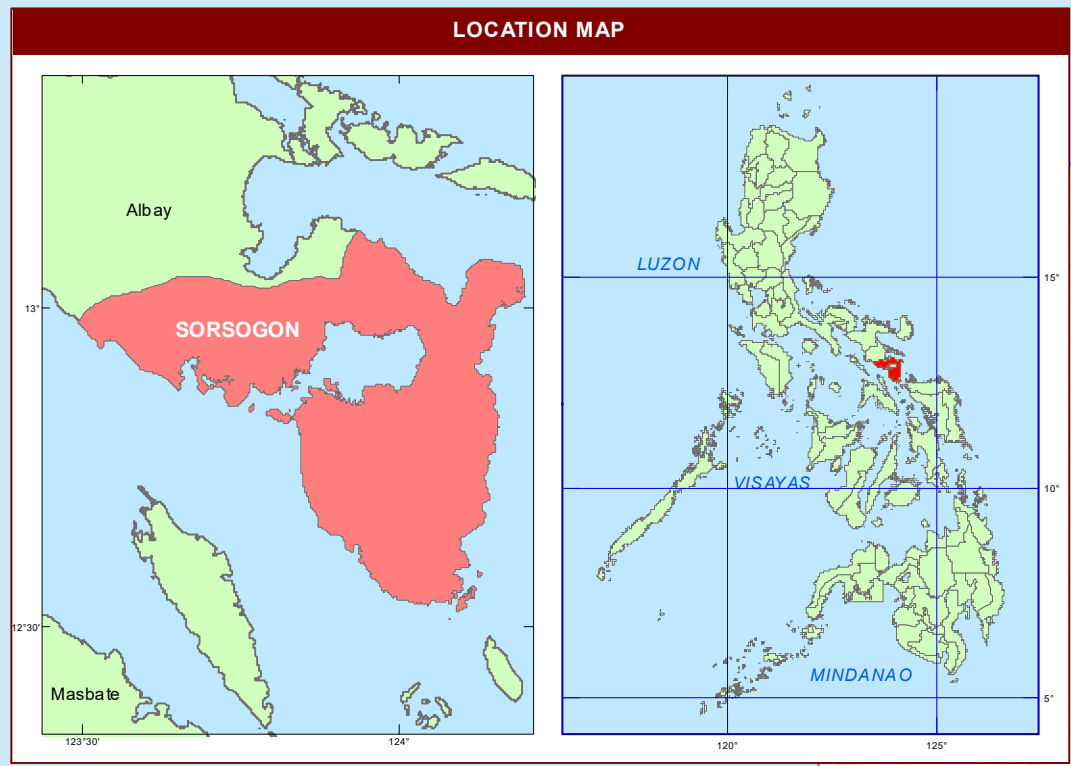


REPUBLIC OF THE PHILIPPINES  
DEPARTMENT OF AGRICULTURE  
**BUREAU OF SOILS AND  
WATER MANAGEMENT**  
Elliptical Road Cor. Visayas Ave., Diliman, Quezon City

**FERTILIZER GUIDE MAP**  
**( Key Rice Areas )**  
**PROVINCE OF SORSOGON**  
  
**SCALE 1:100,000**  
  
Projection : Transverse Mercator  
Datum : Luzon 1911  
DISCLAIMER : All political boundaries are not authoritative



CONVENTIONAL SIGNS		
<b>ROADS</b>	<b>BOUNDARY</b>	<b>HYDROLOGY</b>
Expressway	Regional	Rivers / Lake
Trunk line	Provincial	Shoreline
Primary	District	<b>PLACES</b>
Secondary	Municipal	Capital City / City
Tertiary		Capital Town / Town

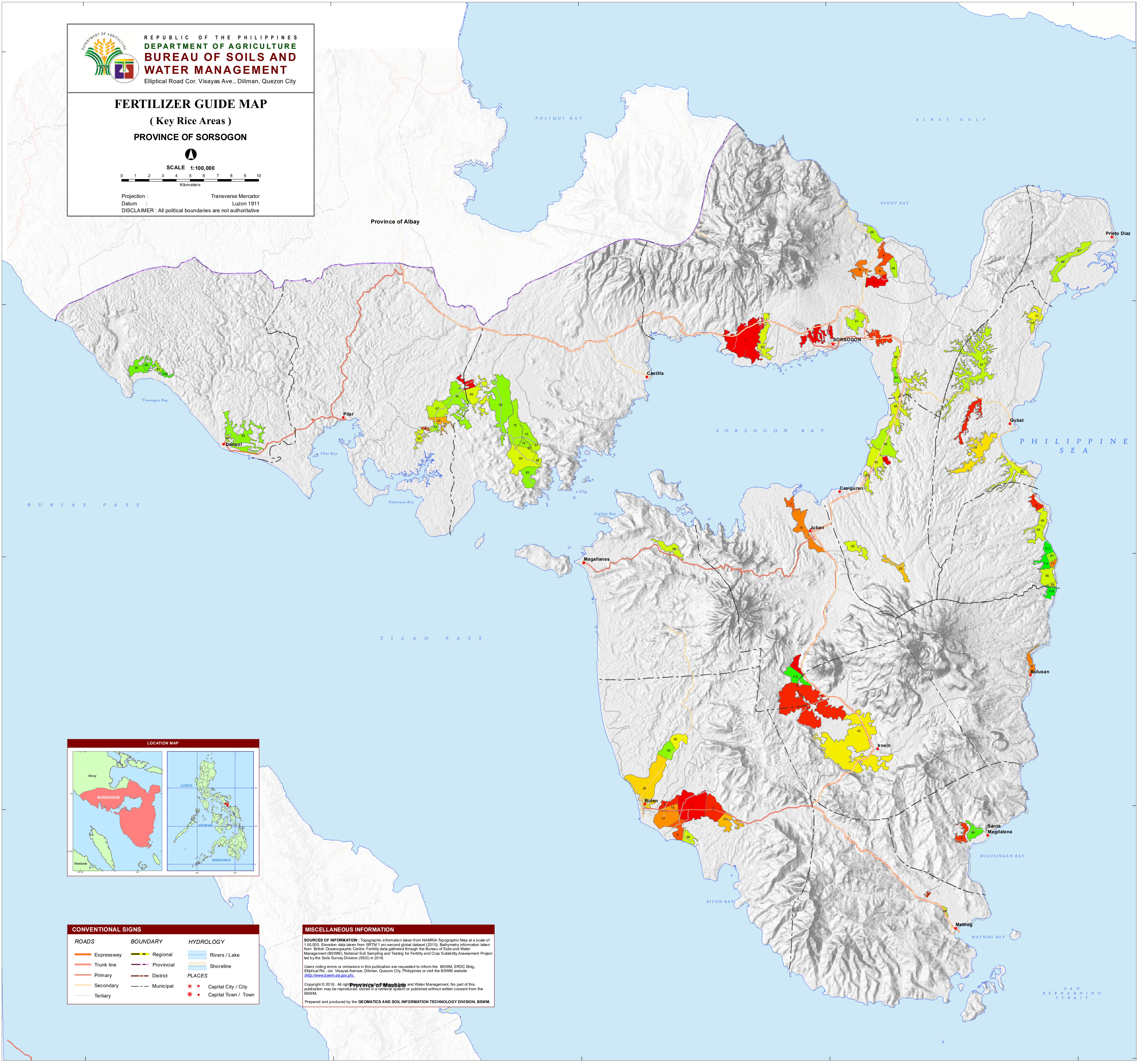
**MISCELLANEOUS INFORMATION**

**SOURCES OF INFORMATION :** Topographic information taken from NAMRIA Topographic Map at a scale of 1:50,000. Elevation data taken from SRTM 1 arc-second global dataset (2015). Bathymetry information taken from British Oceanographic Centre. Fertility data gathered through the Bureau of Soils and Water Management (BSWM) National Soil Sampling and Testing for Fertility and Crop Suitability Assessment Project led by the Soils Survey Division (SSD) in 2016.

Users noting errors or omissions in this publication are requested to inform the BSWM, SRDC Bldg., Elliptical Rd., cor. Visayas Avenue, Diliman, Quezon City, Philippines or visit the BSWM website (<http://www.bswm.da.gov.ph>).

Copyright © 2016. All rights reserved. No part of this publication may be reproduced, stored in a retrieval system or published without written consent from the BSWM.

Prepared and produced by the **GEOMATICS AND SOIL INFORMATION TECHNOLOGY DIVISION, BSWM.**





DESCRIPTION			
TEXTURE	N	P	K
L - Light	L - Low		
	ML - Moderately Low		
M - Medium	MH - Moderately High		
H - Heavy	H - High		

Fertilizer Recommendation Guide for Rice			
1st Application - After last harrowing - Basal	(14-14-14)	Complete	
2nd Application - 10 - 14 DAT (days after transplanting) - Topdress	(46-0-0)	Urea	
3rd Application - 20 - 25 DAT (days after transplanting) - Topdress	(16-20-0)	Ammaphas	
	(0-18-0)	Solaphos	
	(0-0-60)	Muriate of Potos	