

LAND SUITABILITY MAP

CACAO

LAND RESOURCES EVALUATION AND SUITABILITY ASSESSMENT OF STRATEGIC PRODUCTION AREAS

GENERAL SANTOS CITY

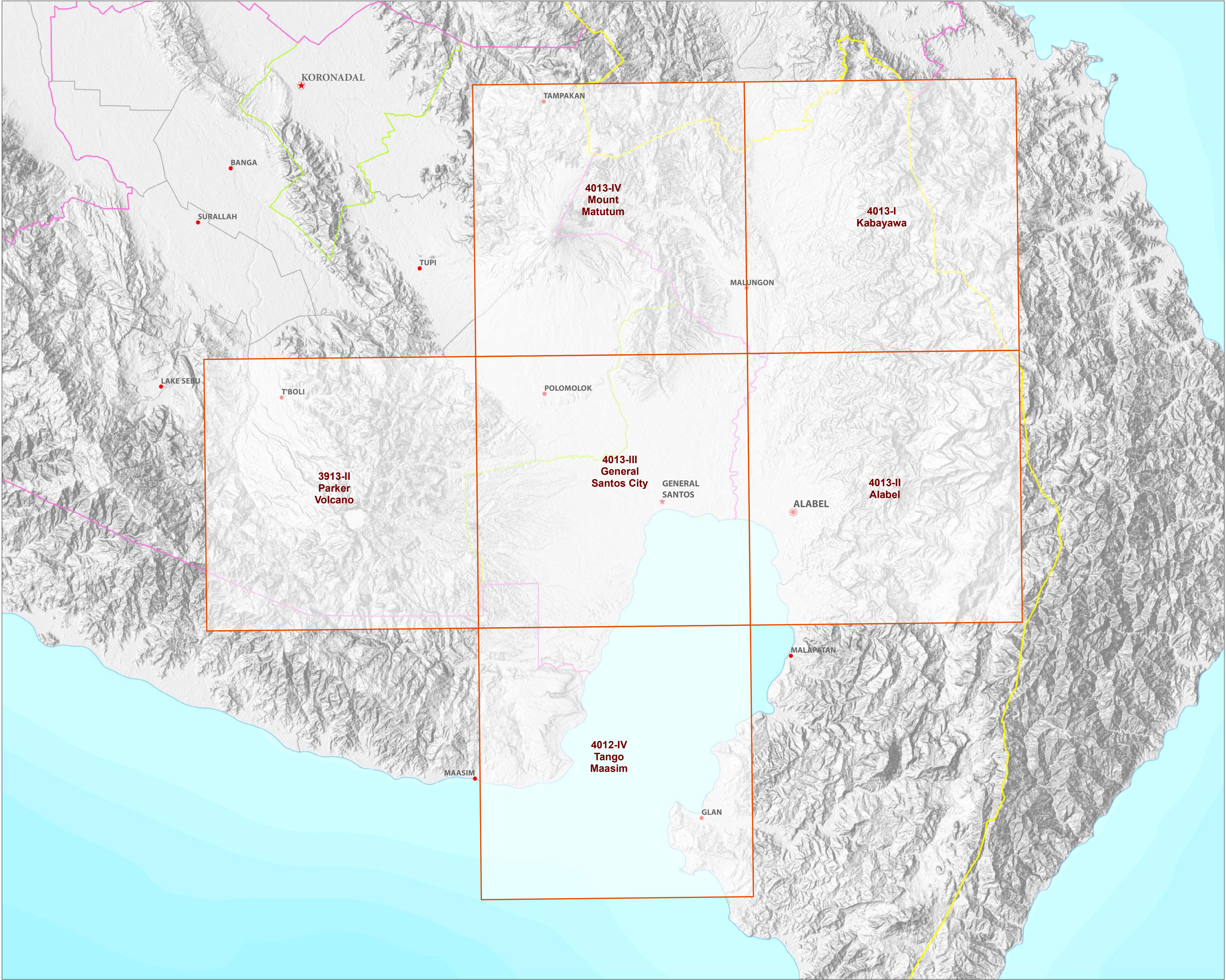


REPUBLIC OF THE PHILIPPINES
DEPARTMENT OF AGRICULTURE
BUREAU OF SOILS AND WATER MANAGEMENT

SRDC Bldg., Elliptical Road Cor. Visayas Avenue, Diliman, Quezon City 1101
Tel/Fax No.: (+632) 332-9534 E-mail: bswmclientcenter@yahoo.com

MAP INDEX

LAND RESOURCES EVALUATION AND SUITABILITY ASSESSMENT OF STRATEGIC PRODUCTION AREAS GENERAL SANTOS CITY



LEGEND

Places

- ★ Capital City
- ★ City
- ⊙ Capital Town
- Town

Administrative Boundary

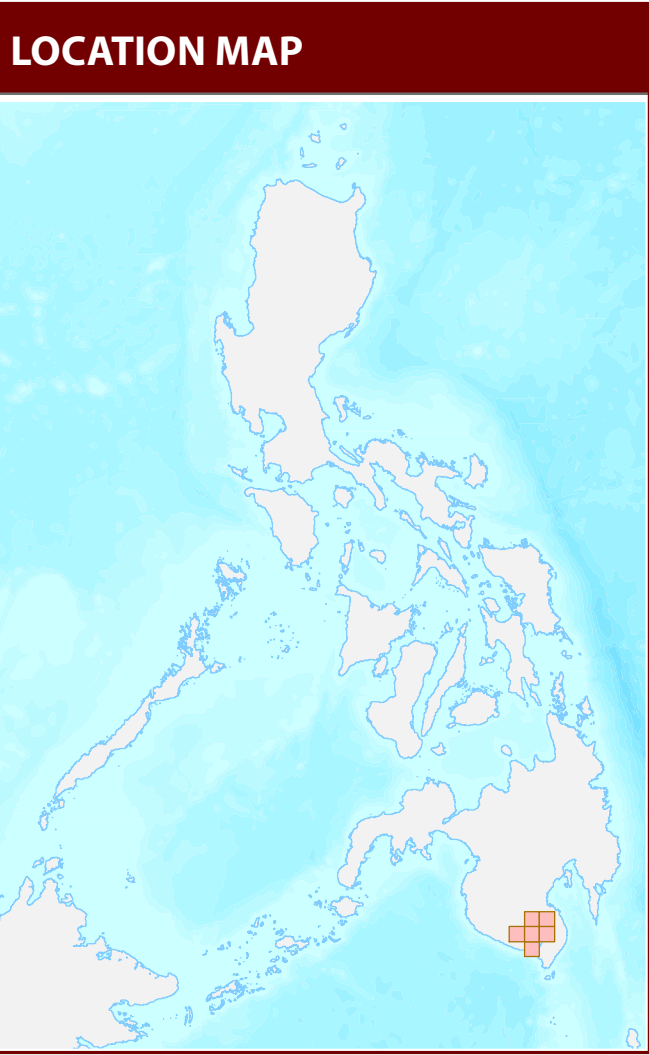
- Regional
- Provincial
- City
- Municipal

Map Index

- Index grid

Topographic Relief

Bathymetry



MISCELLANEOUS INFORMATION

Land suitability information produced by the Bureau of Soils and Water Management (BSWM) through the **Land Resources Evaluation and Suitability Assessment of Strategic Production Areas for Major Commodities Project** duly supported by the Philippine Council on Agriculture and Fisheries (PCA-F) and funded by the Bureau of Agricultural Research (BAR).

Map produced by the Geomatics and Soil Information Technology Division, Bureau of Soils and Water Management (BSWM).

Users noting errors or omissions in this publication are requested to inform the Bureau of Soils and Water Management.

Unless otherwise noted, copyright and any other intellectual property rights is owned by the Philippine Government.

REPUBLIC OF THE PHILIPPINES
DEPARTMENT OF AGRICULTURE
BUREAU OF SOILS AND WATER MANAGEMENT
SRDC Bldg., Elliptical Road Cor. Visayas Avenue,
Diliman, Quezon City 1101 Philippines
Tel/Fax No.: (+632) 332-9534 E-mail: bswm.clientcenter@yahoo.com

LAND SUITABILITY MAP FOR CACAO

LAND RESOURCES EVALUATION AND SUITABILITY ASSESSMENT OF STRATEGIC PRODUCTION AREAS GENERAL SANTOS CITY, REGION XII

EXTENT OF SUITABILITY FOR CACAO PRODUCTION BY MUNICIPALITY

MUNICIPALITY	EXISTING CACAO (Ha)			TOTAL EXISTING AREA (Ha)	EXPANSION AREA (Ha)						CONFLICT RESOLUTION AREA (Ha)						TOTAL POTENTIAL EXPANSION AREA (Ha)
					Coconut		Shrubland, unmanaged*		Grassland, unmanaged*		Corn		Pineapple		Other crops		
	S1	S2	S3		S1	S2	S1	S2	S1	S2	S1	S2	S1	S2			
GENERAL SANTOS CITY	-	-	-	-	2,785	51	593	29	4001	3,388	7,296	1,826	99	12	3	20,084	
TOTAL	-	-	-	-	2,785	51	593	29	4001	3,388	7,296	1,826	99	12	3	20,084	

Note: Delivery of cacao planting materials must be started on the onset of rainy season.
*establishment of shade trees prior to planting of cacao.

SUITABILITY CLASSES:

<div></div> Highly Suitable (S1) Land having no significant limitation to sustained application of a given use, or only minor limitations that will not significantly reduce productivity or benefits and will not raise inputs above an acceptable level.	<div></div> Marginally Suitable (S3) Land having limitations which in aggregate are severe for sustained application of a given use and will so reduce productivity or benefits, or increase required inputs, that this expenditure will be only marginally justified.
<div></div> Moderately Suitable (S2) Land having limitation which in aggregate are moderately severe for sustained application of a given use; the limitation will reduce productivity or benefits and increase required inputs to the extent that the overall advantage to be gained from the use, although still attractive, will be appreciably inferior to that expected on class S1 land.	<div></div> Not Suitable / Not Relevant Land having limitations which may be surmountable in time but which cannot be corrected with existing knowledge at currently acceptable cost; the limitations are so severe as to preclude successful sustained use of the land in the given manner. Existing forest, shrubland greater than 18% slope, irrigated paddy rice and miscellaneous land types such as built up areas, roads, etc are considered as not relevant.

AGRONOMIC REQUIREMENT OF CACAO PRODUCTION

LAND UTILIZATION TYPE	SUITABILITY RATING	SLOPE (%)	SOIL DEPTH (cm)	SOIL TEXTURE	SOIL DRAINAGE	SOIL REACTION (pH)	INHERENT FERTILITY	FLOODING CLASS	EROSION CLASS	ROCK OUTCROPS	ELEVATION (masl)	ANNUAL RAINFALL (mm)	CLIMATIC TYPE
Cacao	S1	<8	>100	CL, SiCL, SCL, SC, SiC, C, HC	WD,MWD	5.6 -7.2	high	none-slight	none-slight	none-few	<1000	2001-4500	I, III, IV
	S2	8 - 30	50 - 100	FSL, L, SiL	SPD,PD	5.1 - 5.5 7.3 - 7.8	medium	moderate	moderate	common	1000-1500	1000-2000	I, II
	S3	>30	<50	S, LS, CSL, SL	VPD,ED	<5.0 - > 7.9	low	severe	severe	many	>1500	<1000 >4500	

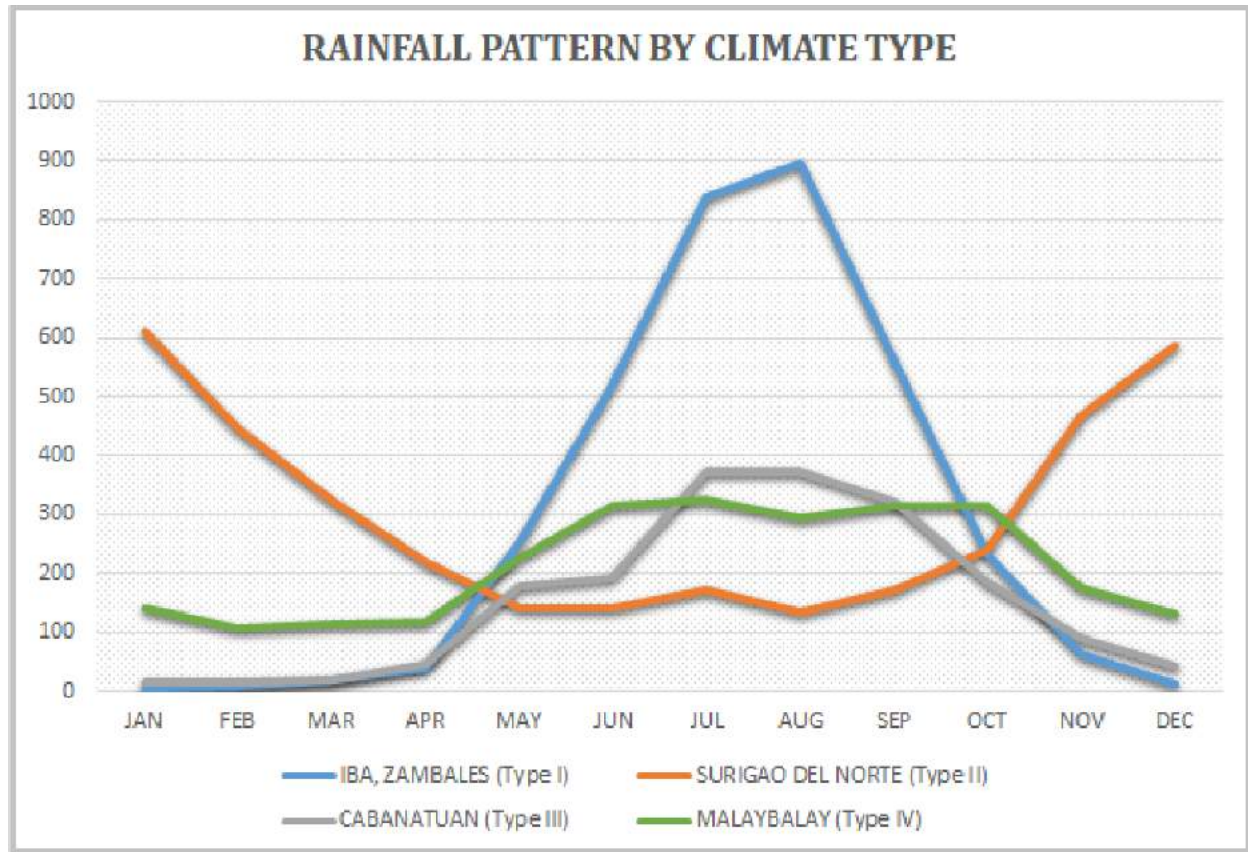
SLOPE (%) 0 - 3 - level to gently sloping 3 - 8 - gently sloping to undulating 8 - 18 - undulating to rolling 18 - 30 - rolling to moderately steep 30 - 50 - steep >50 - very steep	SOIL DRAINAGE ED - excessively drained WD - well drained MWD - moderately well drained SPD - somewhat poorly drained PD - poorly drained VPD - very poorly drained	SOIL REACTION (pH) < 4.5 - extremely acid 4.5 - 5.0 - very strongly acid 5.1 - 5.5 - strongly acid 5.6 - 6.0 - medium acid 6.1 - 6.5 - slightly acid 6.6 - 7.2 - neutral 7.3 - 7.8 - mildly alkaline 7.9 - 8.4 - moderately alkaline > 8.5 - strongly alkaline	SOIL TEXTURE Coarse S - sand LS - loamy sand CSL - coarse sandy loam SL - sandy loam Medium FSL - fine sandy loam L - loam SiL - silt loam CL - clay loam SiCL - silty clay loam SCL - sandy clay loam Fine SC - sandy clay SiC - silty clay C - clay HC - heavy clay
---	---	--	--

LAND LIMITATIONS DESCRIPTION AND COMBINATIONS

ELEVATION EI2 - 1000m - 1500m EI3 - > 1500m	SOIL DRAINAGE D2 - Somewhat poorly drained to poorly drained D3 - Very poorly drained or excessively drained	SOIL DEPTH Sh2 - Moderately deep (50 - 100cm) Sh3 - Very shallow to shallow (< 50cm)	SOIL EROSION E2 - Moderate erosion E3 - Severe erosion
SLOPE/TOPOGRAPHY T2 - Undulating to moderately steep T3 - Steep to very steep	SOIL TEXTURE Tc - Coarse texture	ROCK OUTCROPS Rc2 - Common Rc3 - Many	FLOODING F2 - Moderate seasonal flooding F3 - Severe seasonal flooding

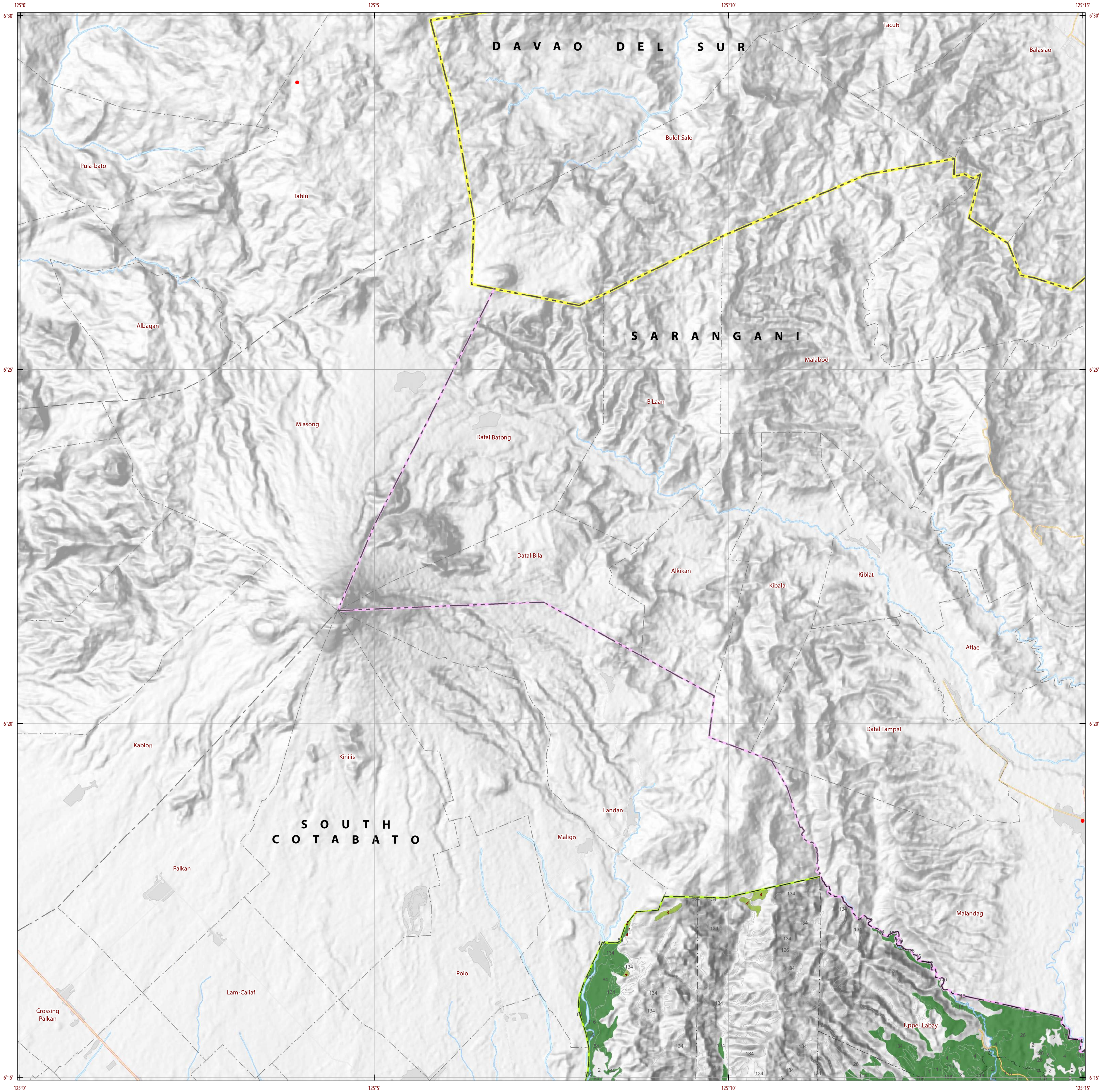
CODE	LIMITATION	CODE	LIMITATION	CODE	LIMITATION
1	E2-Sh2-Rc2	11	T2-E3-Sh2-Rc3	21	T3-E3-Sh3-Rc3
2	EI2	12	T2-EI2	22	T3-EI2-E3-Sh3-Rc3
3	EI2-Rc2	13	T2-EI2-E3-Sh2-Rc2	23	T3-EI3
4	EI2-Sh2-Rc2	14	T3	24	Tc
5	F2-D2	15	T3-E3		
6	F3-D2	16	T3-E3-Sh3-Rc2		
7	Sh2-Rc2	17	T3-E3-Sh3-Rc3		
8	T2	18	T3-EI2		
9	T2-E3	19	T3-EI2-E3-Sh3-Rc2		
10	T2-E3-Sh2-Rc2	20	T3-E3		

CODE	LANDUSE
4	Corn
51	Cassava
84	Pineapple
85	Mango
116	Coconut
126	Grassland
134	Shrubs, unmanaged



Source: PAGASA 2018, *Climatological Normals (Rainfall)*, Philippine Atmospheric, Geophysical and Astronomical Services Administration (PAGASA), accessed 27 July 2018, <<https://www1.pagasa.dost.gov.ph/index.php/climate/climatological-normals>>.

General Santos City is classified as climatic Type IV.



LAND SUITABILITY MAP CACAO

LAND RESOURCES EVALUATION AND SUITABILITY ASSESSMENT OF STRATEGIC PRODUCTION AREAS



SCALE 1 : 50 000



Universal Transverse Mercator Zone 51 N, PRS 1992 Datum
DISCLAIMER : All political boundaries are not authoritative.

LEGEND

SUITABILITY CLASSES

- S1 Highly Suitable** - Land having no significant limitations to sustained application of a given use, or only minor limitations that will not significantly reduce productivity or benefits and will not raise inputs above an acceptable level.
- S2 Moderately Suitable** - Land having limitations which in aggregate are moderately severe for sustained application of a given use; the limitations will reduce productivity or benefits and increase required inputs to the extent that the overall advantage to be gained from the use, although still attractive, will be appreciably inferior to that expected on class S1 land.
- S3 Marginally Suitable** - Land having limitations which in aggregate are severe for sustained application of a given use and will so reduce productivity or benefits, or increase required inputs, that this expenditure will be only marginally justified.

Not Suitable/ Not Relevant

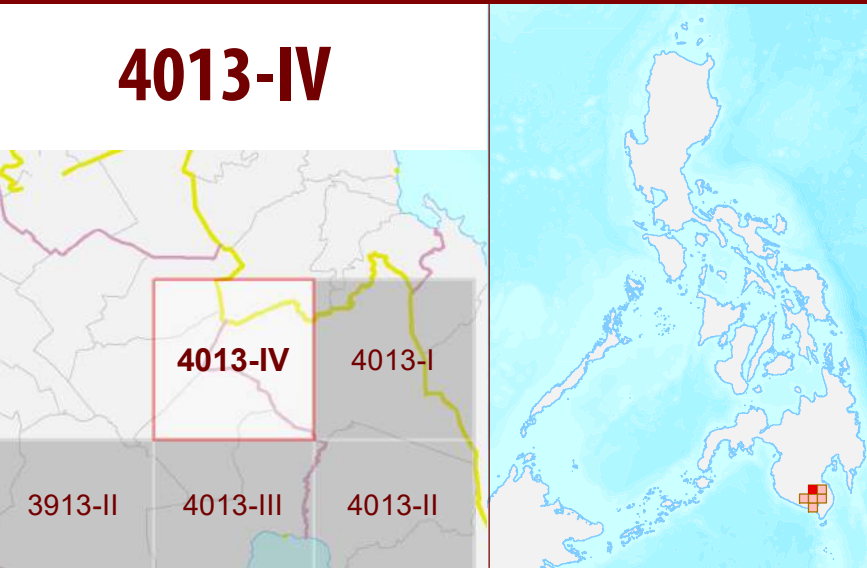
OTHER SIGNS

- NGP Areas
- Cacao
- Land limitation
- Land use

CONVENTIONAL SIGNS

- ROADS**
 - Expressway
 - Trunk line
 - Primary
 - Secondary
 - Tertiary
- BOUNDARY**
 - Region
 - Province
 - District
 - Municipality
 - Barangay
- HYDROLOGY**
 - Sea / Shoreline
 - Lakes / Rivers
- PLACES**
 - Capital City / City
 - Capital Town / Town
- LAND USE**
 - Built-up
 - Fishpond
 - Mangrove

ADJOINING SHEETS



INDEX MAP

MISCELLANEOUS INFORMATION

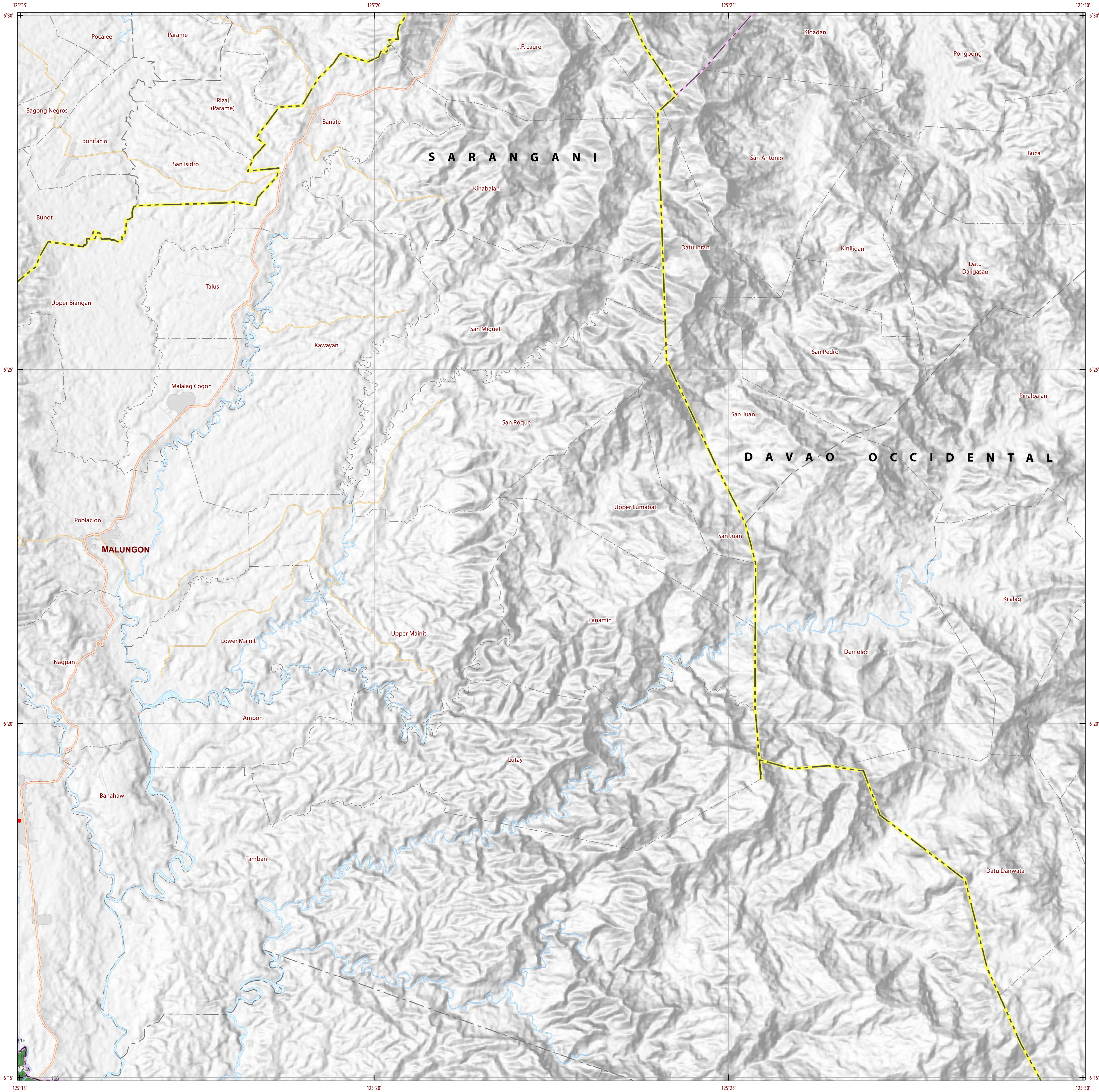
SOURCES OF INFORMATION : Topographic information taken from NAMRIA Topographic Map at 1:50,000 scale. Land resources information from the Agricultural Land Management and Evaluation Division (ALMED), Soils Survey Division (SSD) and Laboratory Services Division (LSD) of BSWM. Rice areas obtained from the Land Use System (FAO, 2015) and Philippine Rice Information System (PRISM) (IRRI, 2015). Data analysis and compilation through the **Land Resources Evaluation and Suitability Assessment of Strategic Production Areas for Major Commodities Project** implemented by BSWM (2017).




Project Leader : BERNARDO B. PASCUA
GIS and Cartography : IRVIN K. SAMALCA
Funding Agency : Department of Agriculture - Bureau of Agricultural Research (DA-BAR)
Collaborating Agencies : Philippine Council on Agriculture and Fisheries (PCAF)
: Department of Agriculture and Fisheries - ARMM, Department of Agriculture Regional Field Office of Region IX, X, XI, XII and XIII (Caraga)
: Local Government Unit (LGU) of covered provinces and municipalities

Map produced by the Geomatics and Soil Information Technology Division, Bureau of Soils and Water Management (BSWM).
Users noting errors or omissions in this publication are requested to inform the Bureau of Soils and Water Management.

This publication is licensed under a Creative Commons Attribution 4.0 International License. Unless otherwise noted, copyright and any other intellectual property rights, in this publication is owned by the Philippine Government. This publication should be attributed as:
BSWM, 2019. *Land Suitability Map Series for Cacao of the GENERAL SANTOS CITY (50,000 Scale)*. CC BY NC SA 4.0.

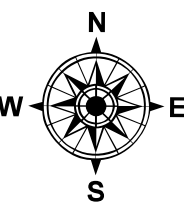
REPUBLIC OF THE PHILIPPINES
DEPARTMENT OF AGRICULTURE
BUREAU OF SOILS AND WATER MANAGEMENT
SRDC Bldg, Elliptical Road Cor. Visayas Avenue, Diliiman, Quezon City 1101
Tel/Fax No.: (+632) 332-9534 E-mail: bswmcenter@da.gov.ph







LAND SUITABILITY MAP
CACAO

LAND RESOURCES EVALUATION AND SUITABILITY
ASSESSMENT OF STRATEGIC PRODUCTION AREAS



SCALE 1 : 50 000



Universal Transverse Mercator Zone 51 N, PRS 1992 Datum
DISCLAIMER : All political boundaries are not authoritative.

SUITABILITY CLASSES

S1

Highly Suitable - Land having no significant limitations to sustained application of a given use, or only minor limitations that will not significantly reduce productivity or benefits and will not raise inputs above an acceptable level.

S2

Moderately Suitable - Land having limitations which in aggregate are moderately severe for sustained application of a given use; the limitations will reduce productivity or benefits and increase required inputs to the extent that the overall advantage to be gained from the use, although still attractive, will be appreciably inferior to that expected on class S1 land.

S3

Marginally Suitable - Land having limitations which in aggregate are severe for sustained application of a given use and will so reduce productivity or benefits, or increase required inputs, that this expenditure will be only marginally justified.

Not Suitable/ Not Relevant

OTHER SIGNS

NGP Areas

Cacao

Land limitation

Land use

CONVENTIONAL SIGNS

ROADS

Expressway

Trunk line

Primary

Secondary

Tertiary

BOUNDARY

Region

Province

District

Municipality

Barangay

HYDROLOGY

Sea / Shoreline

Lakes / Rivers

PLACES

Capital City / City

Capital Town / Town

LAND USE

Built-up

Fishpond

Mangrove

ADJOINING SHEETS

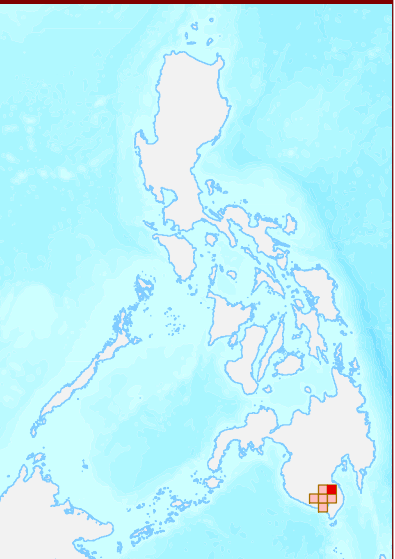
4013-I

4013-IV

4013-II

4013-III

INDEX MAP



MISCELLANEOUS INFORMATION

SOURCES OF INFORMATION

Topographic information taken from NAMRIA Topographic Map at 1:50,000 scale. Land resources information from the Agricultural Land Management and Evaluation Division (ALMED), Soil Survey Division (SSD) and Laboratory Services Division (LSD) of BSWM. Rice areas obtained from the Land Use System (FAO, 2015) and Philippine Rice Information System (PRISM) (IRRI, 2015). Data analysis and compilation through the Land Resources Evaluation and Suitability Assessment of Strategic Production Areas for Major Commodities Project implemented by BSWM (2017).

Project Leader

IRVIN K. SAMALCA

Funding Agency

Department of Agriculture - Bureau of Agricultural Research (DA-BAR)

Collaborating Agencies


Philippine Council on Agriculture and Fisheries (PCAF)

Department of Agriculture and Fisheries - ARMM, Department of Agriculture Regional Field Office of Region IX, X, XI, XII and XIII (Caraga)

Local Government Unit (LGU) of covered provinces and municipalities

Map produced by the Geomatics and Soil Information Technology Division, Bureau of Soils and Water Management (BSWM).

Users noting errors or omissions in this publication are requested to inform the Bureau of Soils and Water Management.



This publication is licensed under a Creative Commons Attribution 4.0 International License. Unless otherwise noted, copyright and any other intellectual property rights, in this publication is owned by the Philippine Government. This publication should be attributed as:
BSWM, 2019. Land Suitability Map Series for Cacao of the GENERAL SANTOS CITY (50,000 Scale) . CC BY NC SA 4.0.

REPUBLIC OF THE PHILIPPINES

DEPARTMENT OF AGRICULTURE

BUREAU OF SOILS AND WATER MANAGEMENT

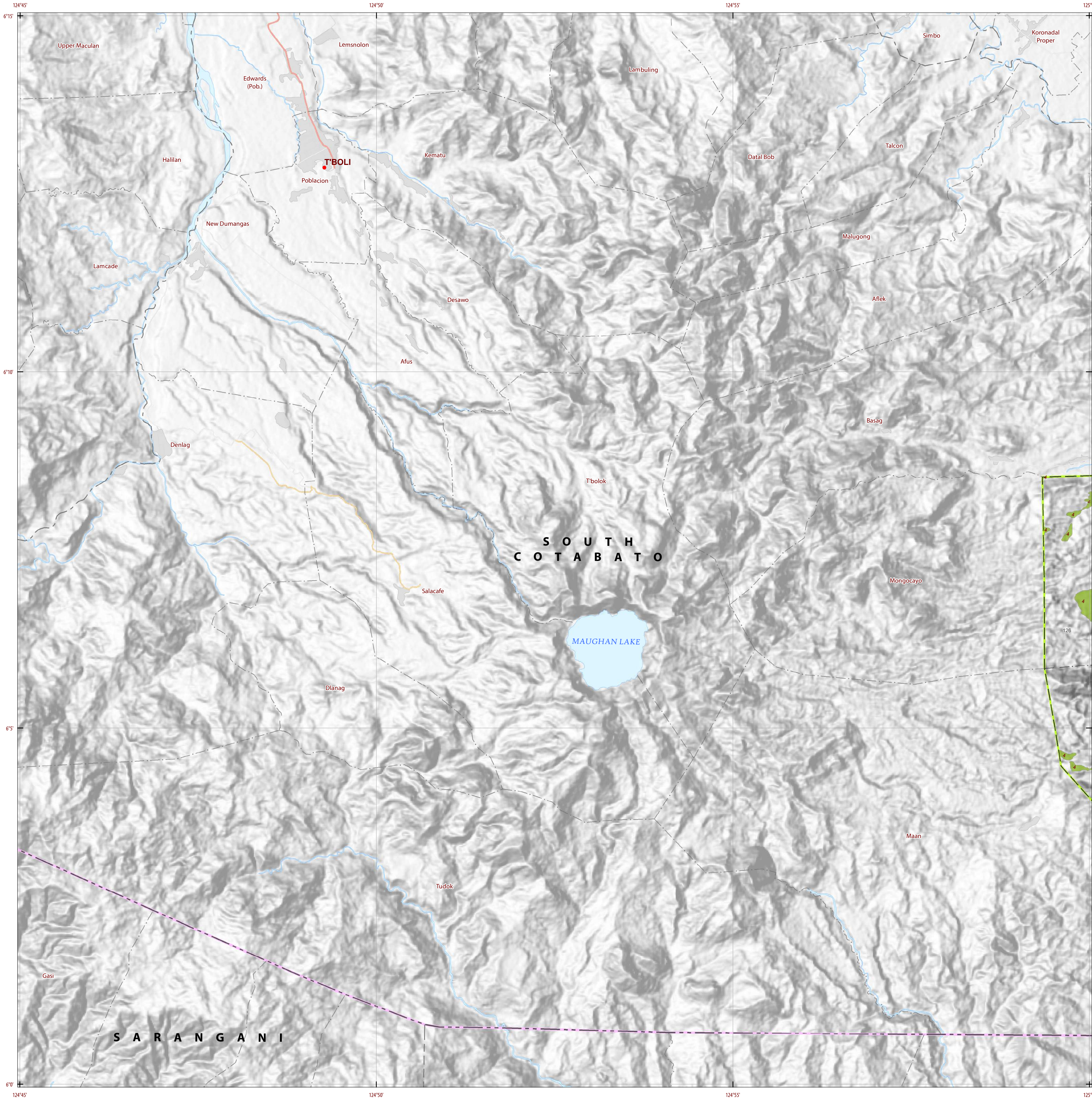
SRDC Bldg., Elliptical Road Cor. Visayas Avenue, Dilliman, Quezon City 1101

Tel/Fax No. : (+632) 332-9534 E-mail: bswmcenter@da.gov.ph

GENERAL SANTOS CITY

Sheet 2 of 6

Sheet No. 4013-I

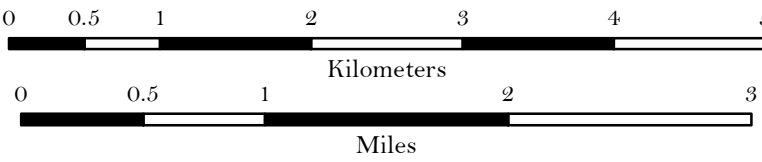


LAND SUITABILITY MAP CACAO

LAND RESOURCES EVALUATION AND SUITABILITY ASSESSMENT OF STRATEGIC PRODUCTION AREAS



SCALE 1 : 50 000



Universal Transverse Mercator Zone 51 N, PRS 1992 Datum
DISCLAIMER : All political boundaries are not authoritative.

LEGEND

SUITABILITY CLASSES

- S1 Highly Suitable** - Land having no significant limitations to sustained application of a given use, or only minor limitations that will not significantly reduce productivity or benefits and will not raise inputs above an acceptable level.
- S2 Moderately Suitable** - Land having limitations which in aggregate are moderately severe for sustained application of a given use; the limitations will reduce productivity or benefits and increase required inputs to the extent that the overall advantage to be gained from the use, although still attractive, will be appreciably inferior to that expected on class S1 land.
- S3 Marginally Suitable** - Land having limitations which in aggregate are severe for sustained application of a given use and will so reduce productivity or benefits, or increase required inputs, that this expenditure will be only marginally justified.

Not Suitable/ Not Relevant

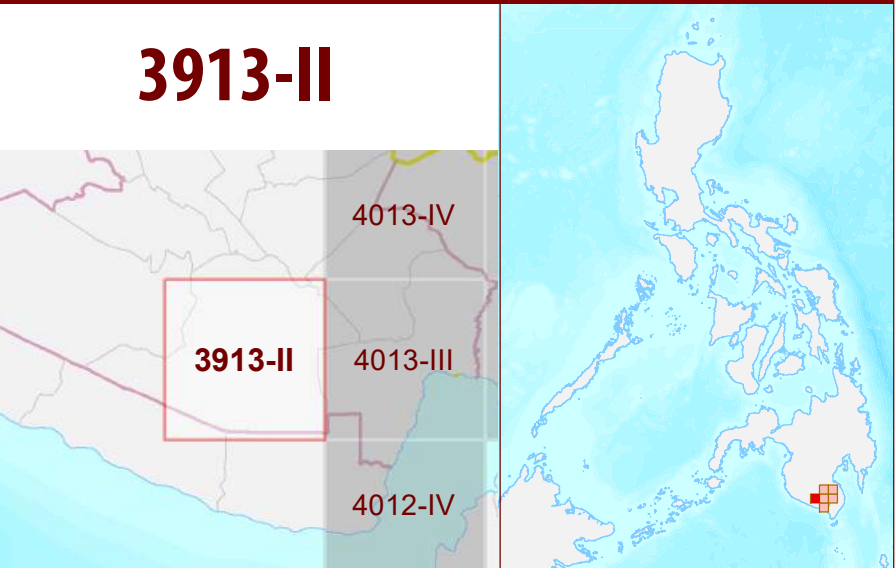
OTHER SIGNS

- NGP Areas
- Cacao
- Land limitation
- Land use

CONVENTIONAL SIGNS

- ROADS**
 - Expressway
 - Trunk line
 - Primary
 - Secondary
 - Tertiary
- BOUNDARY**
 - Region
 - Province
 - District
 - Municipality
 - Barangay
- HYDROLOGY**
 - Sea / Shoreline
 - Lakes / Rivers
- PLACES**
 - Capital City / City
 - Capital Town / Town
- LAND USE**
 - Built-up
 - Fishpond
 - Mangrove

ADJOINING SHEETS



MISCELLANEOUS INFORMATION

SOURCES OF INFORMATION : Topographic information taken from NAMRIA Topographic Map at 1:50,000 scale. Land resources information from the Agricultural Land Management and Evaluation Division (ALMED), Soils Survey Division (SSD) and Laboratory Services Division (LSD) of BSWM. Rice areas obtained from the Land Use System (FAO, 2015) and Philippine Rice Information System (PRISM) (IRRI, 2015). Data analysis and compilation through the **Land Resources Evaluation and Suitability Assessment of Strategic Production Areas for Major Commodities Project** implemented by BSWM (2017).

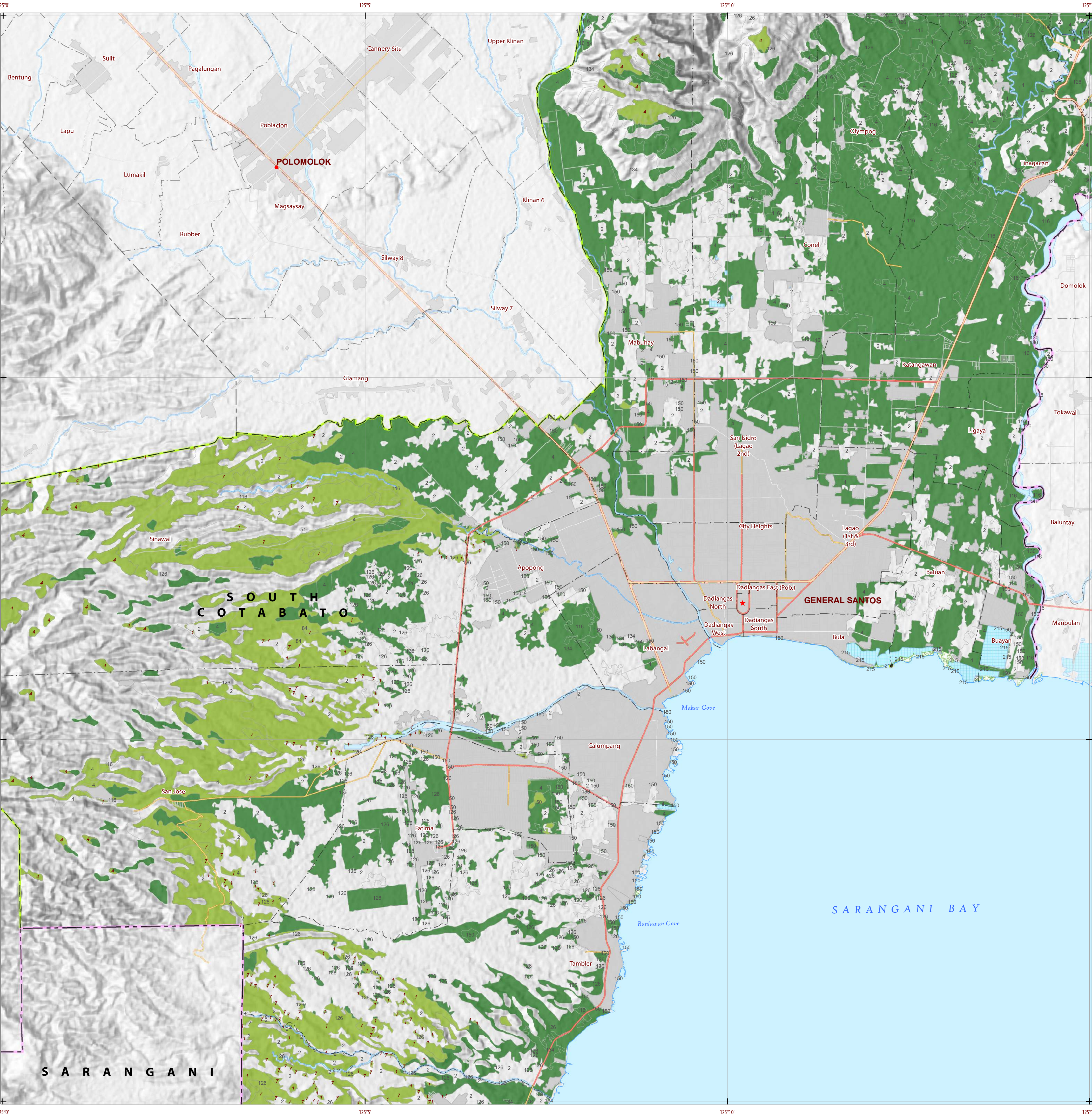
Project Leader : BERNARDO B. PASCUA
GIS and Cartography : IRVIN K. SAMALCA
Funding Agency : Department of Agriculture - Bureau of Agricultural Research (DA-BAR)
Collaborating Agencies : Philippine Council on Agriculture and Fisheries (PCAF)
: Department of Agriculture and Fisheries - ARMM, Department of Agriculture Regional Field Office of Region IX, X, XI, XII and XIII (Caraga)
: Local Government Unit (LGU) of covered provinces and municipalities




Map produced by the Geomatics and Soil Information Technology Division, Bureau of Soils and Water Management (BSWM). Users noting errors or omissions in this publication are requested to inform the Bureau of Soils and Water Management.



This publication is licensed under a Creative Commons Attribution 4.0 International License. Unless otherwise noted, copyright and any other intellectual property rights, in this publication is owned by the Philippine Government. This publication should be attributed as:
BSWM, 2019. *Land Suitability Map Series for Cacao of the GENERAL SANTOS CITY (50,000 Scale)*. CC BY NC SA 4.0.

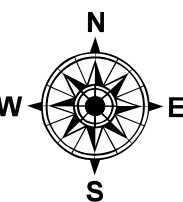
REPUBLIC OF THE PHILIPPINES
DEPARTMENT OF AGRICULTURE
BUREAU OF SOILS AND WATER MANAGEMENT
SRDC Bldg, Elliptical Road Cor. Visayas Avenue, Diliman, Quezon City 1101
Tel/Fax No.: (+632) 332-9534 E-mail: bswmcenter@da.gov.ph







LAND SUITABILITY MAP
CACAO

LAND RESOURCES EVALUATION AND SUITABILITY
ASSESSMENT OF STRATEGIC PRODUCTION AREAS



SCALE 1 : 50 000



Universal Transverse Mercator Zone 51 N, PRS 1992 Datum
DISCLAIMER : All political boundaries are not authoritative.

SUITABILITY CLASSES

S1

Highly Suitable - Land having no significant limitations to sustained application of a given use, or only minor limitations that will not significantly reduce productivity or benefits and will not raise inputs above an acceptable level.

S2

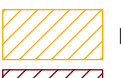
Moderately Suitable - Land having limitations which in aggregate are moderately severe for sustained application of a given use; the limitations will reduce productivity or benefits and increase required inputs to the extent that the overall advantage to be gained from the use, although still attractive, will be appreciably inferior to that expected on class S1 land.

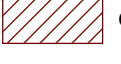
S3


Marginally Suitable - Land having limitations which in aggregate are severe for sustained application of a given use and will so reduce productivity or benefits, or increase required inputs, that this expenditure will be only marginally justified.


Not Suitable/ Not Relevant

OTHER SIGNS

 NGP Areas


 Cacao


 Land limitation


 Land use


CONVENTIONAL SIGNS

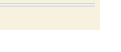
ROADS

 Expressway


 Trunk line

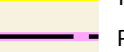
 Primary


 Secondary

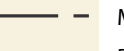
 Tertiary


BOUNDARY

 Region

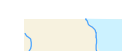
 Province


 District

 Municipality


 Barangay

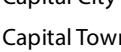
HYDROLOGY

 Sea / Shoreline


 Lakes / Rivers


PLACES


 Capital City / City

 Capital Town / Town

LAND USE

 Built-up

 Fishpond

 Mangrove

ADJOINING SHEETS

4013-III

4013-IV 4013-I

3913-II 4013-II

4012-IV

INDEX MAP

MISCELLANEOUS INFORMATION

SOURCES OF INFORMATION : Topographic information taken from NAMRIA Topographic Map at 1:50,000 scale. Land resources information from the Agricultural Land Management and Evaluation Division (ALMED), Soils Survey Division (SSD) and Laboratory Services Division (LSD) of BSWM. Rice areas obtained from the Land Use System (FAO, 2015) and Philippine Rice Information System (PRISM) (IRRI, 2015). Data analysis and compilation through the Land Resources Evaluation and Suitability Assessment of Strategic Production Areas for Major Commodities Project implemented by BSWM (2017).

Project Leader : BERNARDO B. PASCUA

GIS and Cartography : IRVIN K. SAMALCA

Funding Agency : Department of Agriculture - Bureau of Agricultural Research (DA-BAR)


Collaborating Agencies : Philippine Council on Agriculture and Fisheries (PCAF)

: Department of Agriculture and Fisheries - ARMM, Department of Agriculture Regional Field Office of Region IX, X, XI, XII and XIII (Caraga)

: Local Government Unit (LGU) of covered provinces and municipalities

Map produced by the Geomatics and Soil Information Technology Division, Bureau of Soils and Water Management (BSWM).

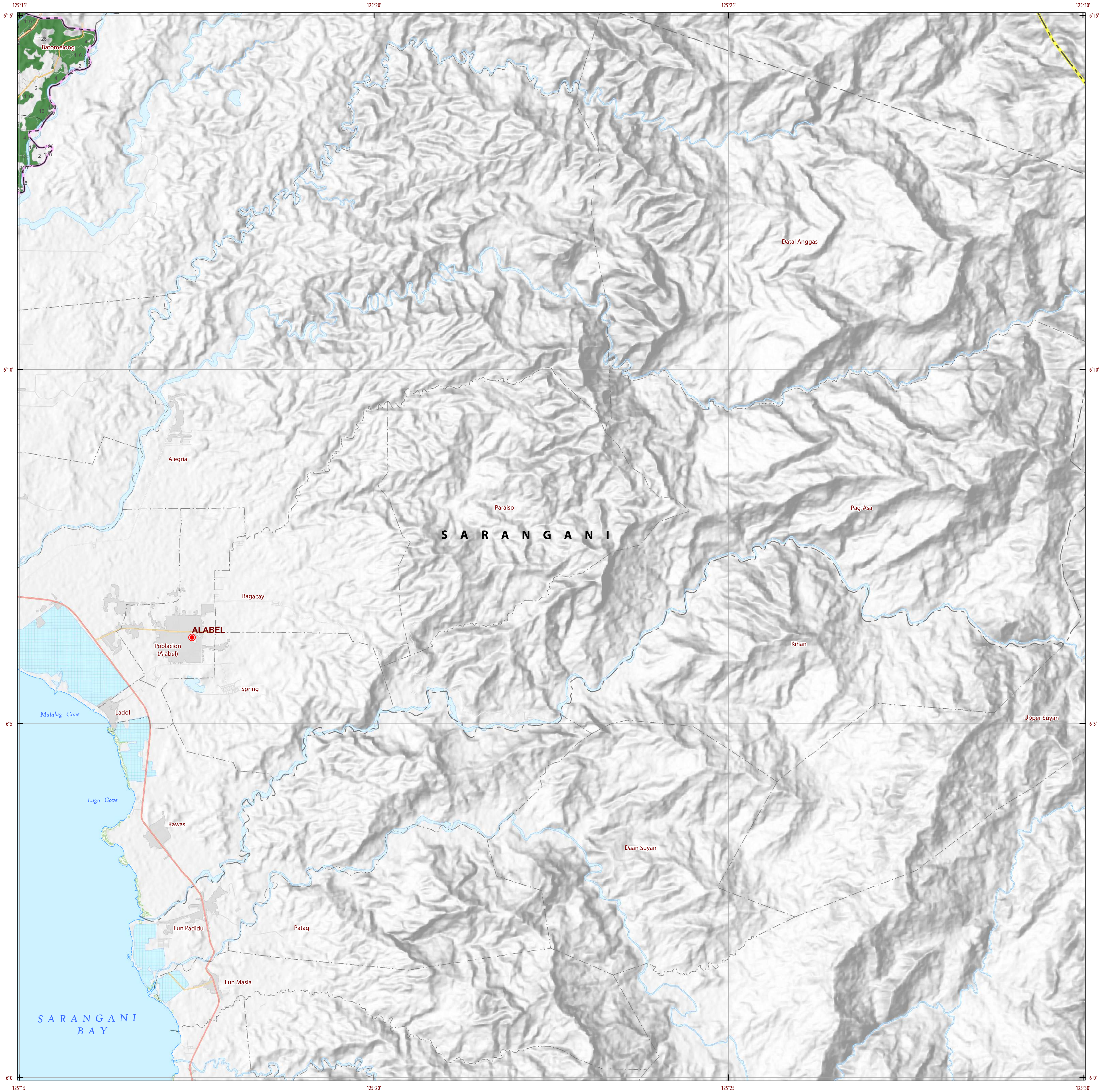
Users noting errors or omissions in this publication are requested to inform the Bureau of Soils and Water Management.

 This publication is licensed under a Creative Commons Attribution 4.0 International License. Unless otherwise noted, copyright and any other intellectual property rights, in this publication is owned by the Philippine Government. This publication should be attributed as : BSWM, 2019. Land Suitability Map Series for Cacao of the GENERAL SANTOS CITY (50,000 Scale) . CC BY NC SA 4.0.

REPUBLIC OF THE PHILIPPINES
DEPARTMENT OF AGRICULTURE
BUREAU OF SOILS AND WATER MANAGEMENT

SRDC Bldg, Elliptical Road Cor. Visayas Avenue, Diliman, Quezon City 1101

Tel/Fax No. : (+632) 332-9534 E-mail : bswmclientcenter@yahoo.com



LAND SUITABILITY MAP CACAO

LAND RESOURCES EVALUATION AND SUITABILITY ASSESSMENT OF STRATEGIC PRODUCTION AREAS



SCALE 1 : 50 000



Universal Transverse Mercator Zone 51 N, PRS 1992 Datum
DISCLAIMER : All political boundaries are not authoritative.

LEGEND

SUITABILITY CLASSES

- S1 Highly Suitable** - Land having no significant limitations to sustained application of a given use, or only minor limitations that will not significantly reduce productivity or benefits and will not raise inputs above an acceptable level.
- S2 Moderately Suitable** - Land having limitations which in aggregate are moderately severe for sustained application of a given use; the limitations will reduce productivity or benefits and increase required inputs to the extent that the overall advantage to be gained from the use, although still attractive, will be appreciably inferior to that expected on class S1 land.
- S3 Marginally Suitable** - Land having limitations which in aggregate are severe for sustained application of a given use and will so reduce productivity or benefits, or increase required inputs, that this expenditure will be only marginally justified.

Not Suitable/ Not Relevant

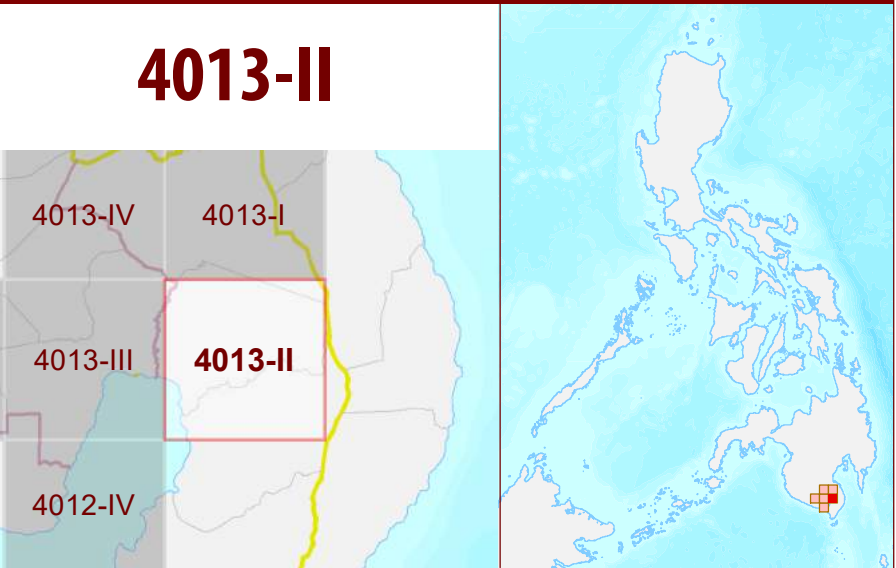
OTHER SIGNS

- NGP Areas
- Cacao
- Land limitation
- Land use

CONVENTIONAL SIGNS

- ROADS**
 - Expressway
 - Trunk line
 - Primary
 - Secondary
 - Tertiary
- BOUNDARY**
 - Region
 - Province
 - District
 - Municipality
 - Barangay
- HYDROLOGY**
 - Sea / Shoreline
 - Lakes / Rivers
- PLACES**
 - Capital City / City
 - Capital Town / Town
- LAND USE**
 - Built-up
 - Fishpond
 - Mangrove

ADJOINING SHEETS



MISCELLANEOUS INFORMATION

SOURCES OF INFORMATION : Topographic information taken from NAMRIA Topographic Map at 1:50,000 scale. Land resources information from the Agricultural Land Management and Evaluation Division (ALMED), Soil Survey Division (SSD) and Laboratory Services Division (LSD) of BSWM. Rice areas obtained from the Land Use System (FAO, 2015) and Philippine Rice Information System (PRISM) (IRRI, 2015). Data analysis and compilation through the **Land Resources Evaluation and Suitability Assessment of Strategic Production Areas for Major Commodities Project** implemented by BSWM (2017).

Project Leader : BERNARDO B. PASCUA
GIS and Cartography : IRVIN K. SAMALCA

Funding Agency : Department of Agriculture - Bureau of Agricultural Research (DA-BAR)
Collaborating Agencies : Philippine Council on Agriculture and Fisheries (PCAF)
Department of Agriculture and Fisheries - ARMM, Department of Agriculture Regional Field Office of Region IX, X, XI, XII and XIII (Caraga)
Local Government Unit (LGU) of covered provinces and municipalities

Map produced by the Geomatics and Soil Information Technology Division, Bureau of Soils and Water Management (BSWM). Users noting errors or omissions in this publication are requested to inform the Bureau of Soils and Water Management.

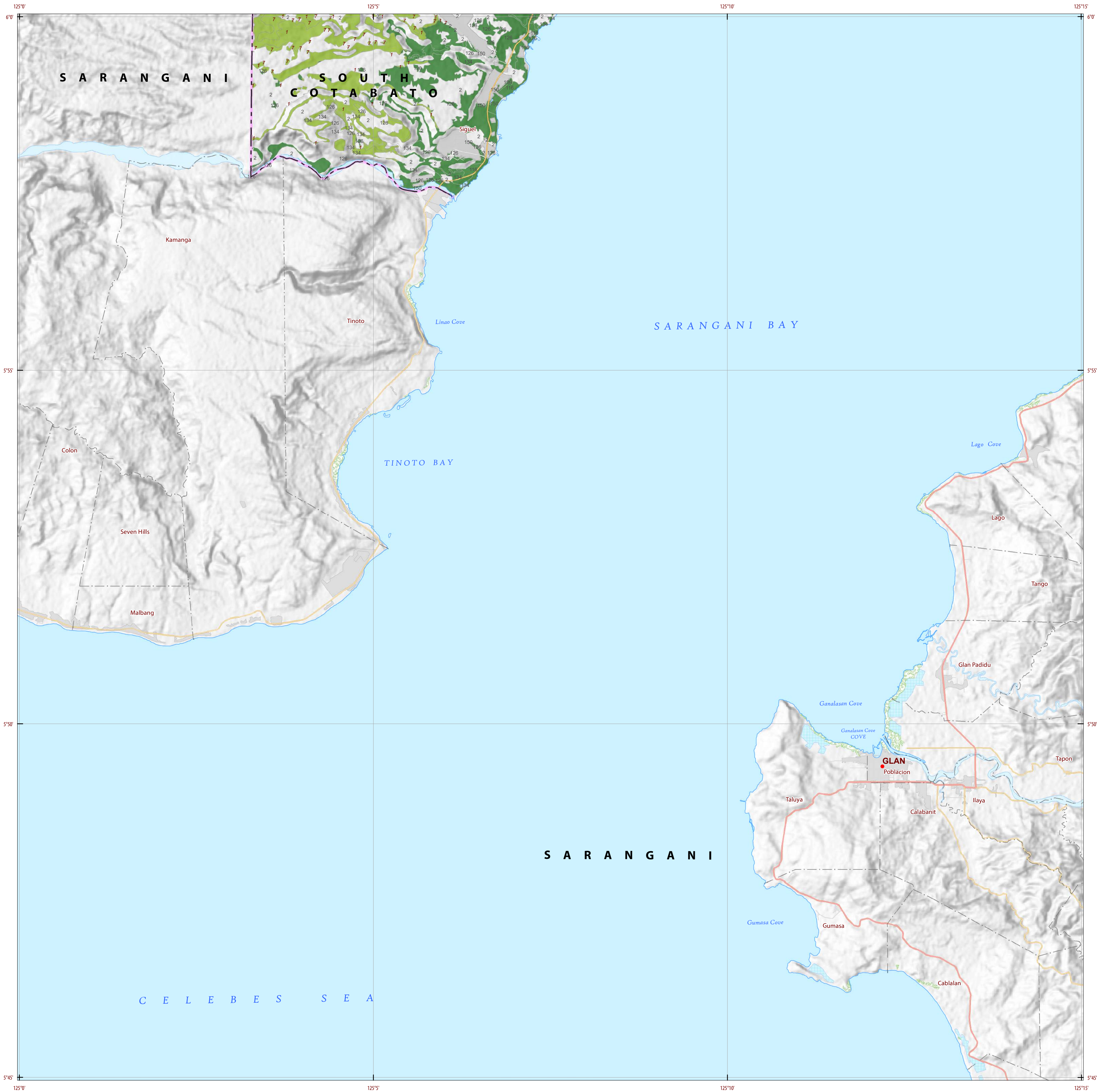
This publication is licensed under a Creative Commons Attribution 4.0 International License. Unless otherwise noted, copyright and any other intellectual property rights, in this publication is owned by the Philippine Government. This publication should be attributed as:
BSWM, 2019. *Land Suitability Map Series for Cacao of the GENERAL SANTOS CITY (50,000 Scale)*. CC BY NC SA 4.0.

REPUBLIC OF THE PHILIPPINES
DEPARTMENT OF AGRICULTURE
BUREAU OF SOILS AND WATER MANAGEMENT
SRDC Bldg, Elliptical Road Cor. Visayas Avenue, Diliman, Quezon City 1101
Tel/Fax No.: (+632) 332-9534 E-mail: bswmclientcenter@da.gov.ph

4012-IV

GENERAL SANTOS CITY

Tango Maasim



LAND SUITABILITY MAP
CACAO

LAND RESOURCES EVALUATION AND SUITABILITY
ASSESSMENT OF STRATEGIC PRODUCTION AREAS



SCALE 1 : 50 000



Universal Transverse Mercator Zone 51 N, PRS 1992 Datum
DISCLAIMER : All political boundaries are not authoritative.

LEGEND

SUITABILITY CLASSES

- S1 Highly Suitable** - Land having no significant limitations to sustained application of a given use, or only minor limitations that will not significantly reduce productivity or benefits and will not raise inputs above an acceptable level.
- S2 Moderately Suitable** - Land having limitations which in aggregate are moderately severe for sustained application of a given use; the limitations will reduce productivity or benefits and increase required inputs to the extent that the overall advantage to be gained from the use, although still attractive, will be appreciably inferior to that expected on class S1 land.
- S3 Marginally Suitable** - Land having limitations which in aggregate are severe for sustained application of a given use and will so reduce productivity or benefits, or increase required inputs, that this expenditure will be only marginally justified.

Not Suitable/ Not Relevant

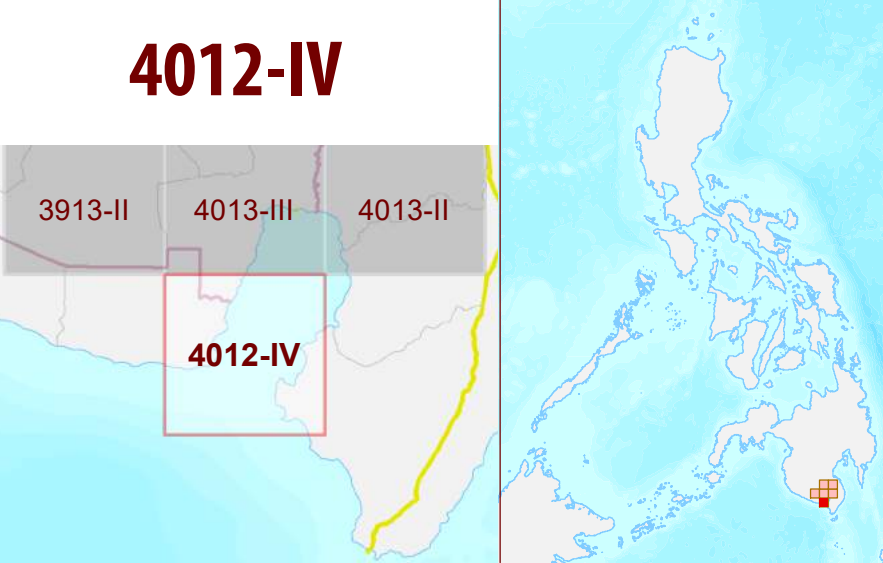
OTHER SIGNS

- NGP Areas
Cacao
Land limitation
Land use

CONVENTIONAL SIGNS

- ROADS**
Expressway
Trunk line
Primary
Secondary
Tertiary
- BOUNDARY**
Region
Province
District
Municipality
Barangay
- HYDROLOGY**
Sea / Shoreline
Lakes / Rivers
- PLACES**
Capital City / City
Capital Town / Town
- LAND USE**
Built-up
Fishpond
Mangrove

ADJOINING SHEETS



MISCELLANEOUS INFORMATION

SOURCES OF INFORMATION : Topographic information taken from NAMRIA Topographic Map at 1:50,000 scale. Land resources information from the Agricultural Land Management and Evaluation Division (ALMED), Soils Survey Division (SSD) and Laboratory Services Division (LSD) of BSWM. Rice areas obtained from the Land Use System (FAO, 2015) and Philippine Rice Information System (PRISM) (IRRI, 2015). Data analysis and compilation through the **Land Resources Evaluation and Suitability Assessment of Strategic Production Areas for Major Commodities Project** implemented by BSWM (2017).

Project Leader : BERNARDO B. PASCUA
GIS and Cartography : IRVIN K. SAMALCA

Funding Agency : Department of Agriculture - Bureau of Agricultural Research (DA-BAR)
Collaborating Agencies : Philippine Council on Agriculture and Fisheries (PCAF)
: Department of Agriculture and Fisheries - ARMM, Department of Agriculture Regional Field Office of Region IX, X, XI, XII and XIII (Caraga)
: Local Government Unit (LGU) of covered provinces and municipalities

Map produced by the Geomatics and Soil Information Technology Division, Bureau of Soils and Water Management (BSWM).
Users noting errors or omissions in this publication are requested to inform the Bureau of Soils and Water Management.



This publication is licensed under a Creative Commons Attribution 4.0 International License. Unless otherwise noted, copyright and any other intellectual property rights, in this publication is owned by the Philippine Government. This publication should be attributed as :
BSWM, 2019. *Land Suitability Map Series for Cacao of the GENERAL SANTOS CITY (50,000 Scale)*. CC BY NC SA 4.0.

REPUBLIC OF THE PHILIPPINES
DEPARTMENT OF AGRICULTURE
BUREAU OF SOILS AND WATER MANAGEMENT
SRDC Bldg, Elliptical Road Cor. Visayas Avenue, Diliman, Quezon City 1101
Tel/Fax No.: (+632) 332-9534 E-mail: bswmcenter@da.gov.ph