

REPUBLIC OF THE PHILIPPINES  
DEPARTMENT OF AGRICULTURE  
**BUREAU OF SOILS AND  
WATER MANAGEMENT**  
Elliptical Road Cor. Visayas Ave., Diliman, Quezon City

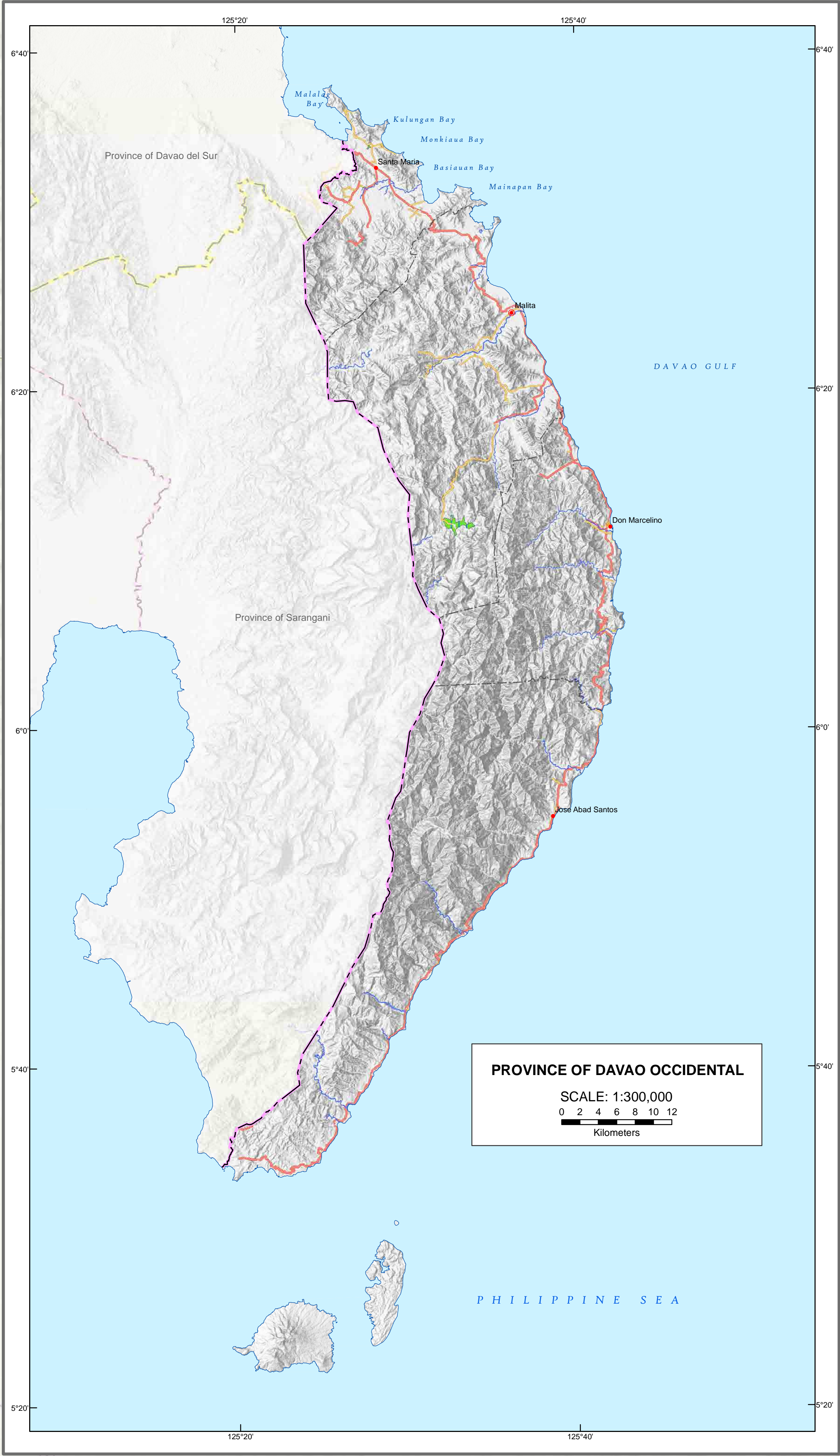
**NUTRIENT STATUS MAP : MAGNESIUM**  
( Key Rice Areas )  
PROVINCE OF DAVAO OCCIDENTAL

SCALE 1:50,000

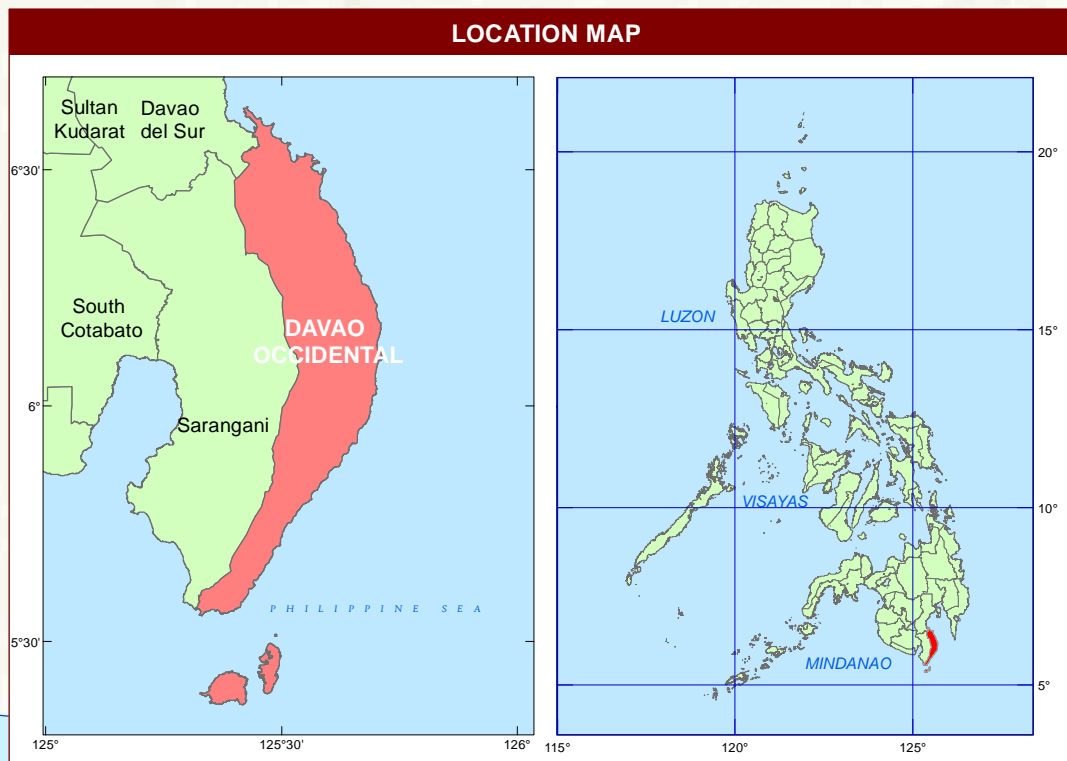
01234

Kilometers

Projection : Transverse Mercator  
Datum : PRS 1992  
DISCLAIMER : All political boundaries are not authoritative



LEGEND				
MAPPING UNIT	DESCRIPTION	Exchangeable Mg, cmol/kg	AREA	
			ha	%
	Sufficient	>1.0	263	100.00
	Deficient	1.0 and below	--	--
TOTAL			263	100.00
Paddy Irrigated  Paddy Non-Irrigated				



CONVENTIONAL SIGNS		
ROADS	BOUNDARY	HYDROLOGY
Expressway	Regional	Rivers / Lake
Trunk line	Provincial	Shoreline
Primary	City	<b>PLACES</b>
Secondary	Municipal	
Tertiary	Residential	
Residential		Capital City / City
		Capital Town / Town

**MISCELLANEOUS INFORMATION**

**SOURCES OF INFORMATION:** Topographic information taken from NAMRIA Topographic Map at a scale of 1:50,000. Elevation data taken from SRTM 1 arc-second global dataset (2015). Bathymetry information taken from Bathymetric Charting Office (BCO) data gathered through the Soil Health Assessment - National Soil Sampling and Testing Project Phase II led by the Bureau of Soils and Water Management in partnership with the DA - Regional Field Office (RFO) and Local Government Units (LGUs) in 2017.

Users noting errors or omissions in this publication are requested to inform the BSWM, SRDC Bldg., Circular Rd., cor. Highway Avenue, Diliman, Quezon City, Philippines or visit the BSWM website (<http://www.bswm.da.gov.ph>).

Copyright © 2018. All rights reserved to the Bureau of Soils and Water Management. No part of this publication may be reproduced, stored in a retrieval system, or published without written consent from the BSWM.

Prepared and produced by the GEOMATICS AND SOIL INFORMATION TECHNOLOGY DIVISION, BSWM.