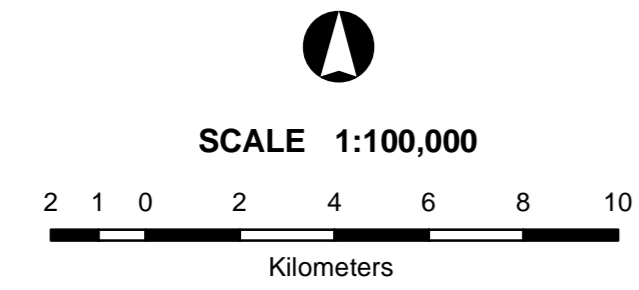


REPUBLIC OF THE PHILIPPINES  
**DEPARTMENT OF AGRICULTURE**  
**BUREAU OF SOILS AND**  
**WATER MANAGEMENT**  
 Elliptical Road Cor. Visayas Ave., Diliman, Quezon City

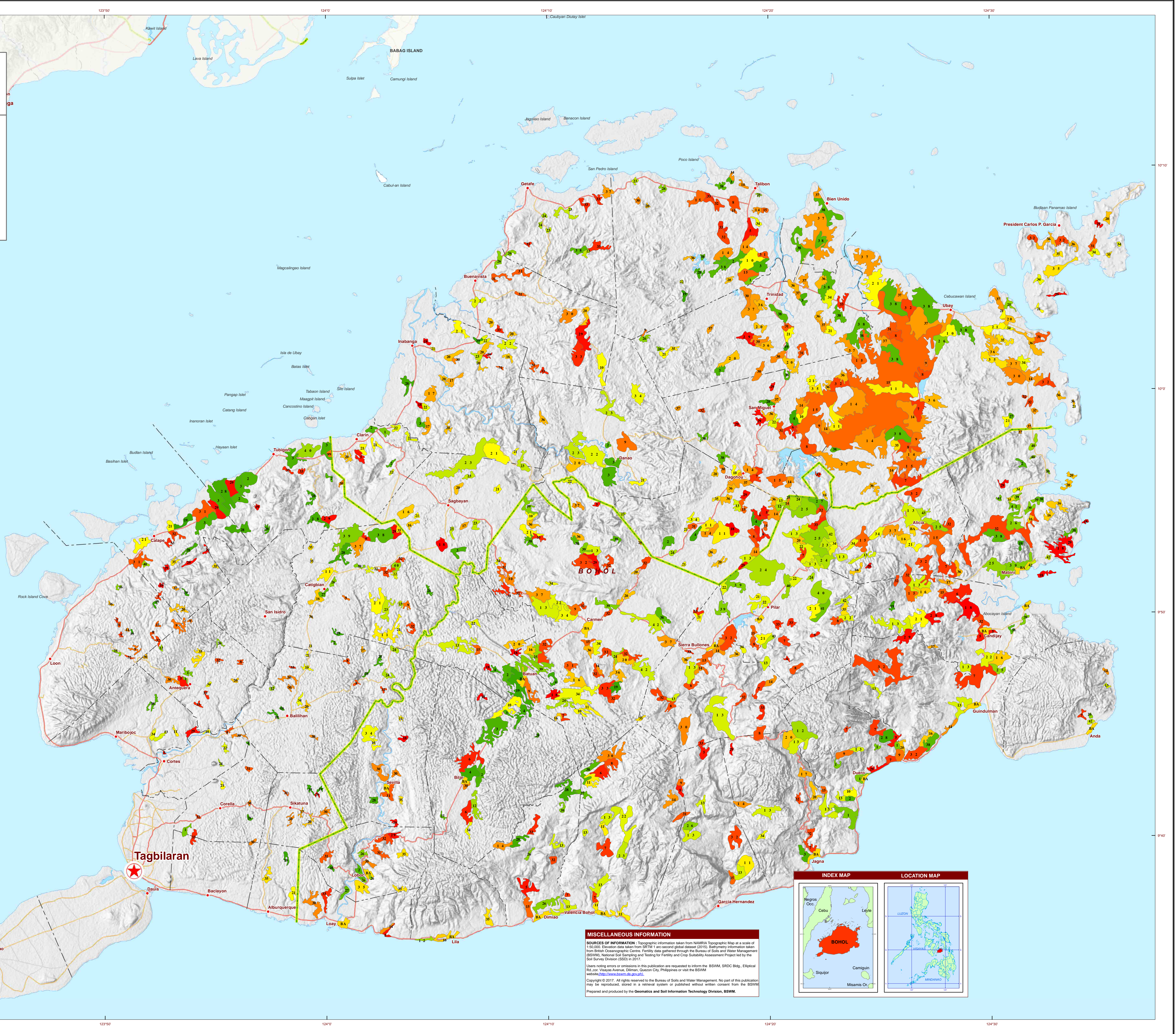
**FERTILIZER GUIDE MAP**  
**( Key Rice Areas )**

**PROVINCE OF BOHOL**

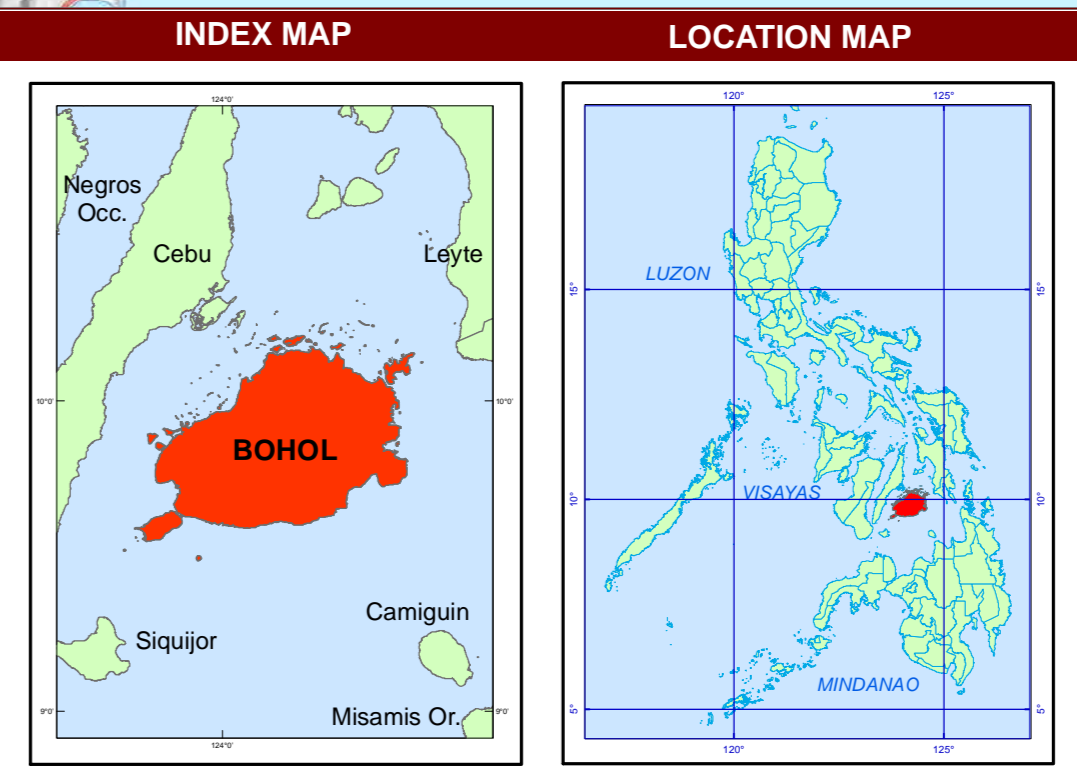


Projection : Transverse Mercator  
 Datum : Luzon 1911  
 DISCLAIMER : All political boundaries are not authoritative

CONVENTIONAL SIGNS		
<b>ROADS</b>	<b>BOUNDARY</b>	<b>HYDROLOGY</b>
Expressway	District	Rivers / Lake
Trunk line	Municipality	<b>PLACES</b>
Primary	Shoreline	Capital City / City
Secondary		Capital Town / Town
Tertiary		Barangay



**MISCELLANEOUS INFORMATION**  
**SOURCES OF INFORMATION:** Topographic information taken from NAMRIA Topographic Map at a scale of 1:50,000; Elevation data taken from SRTM 3 arc-second global dataset (2013); Boundary information taken from British Oceanographic Centre; Fertility data gathered through the Bureau of Soils and Water Management (BSWM) National Soil Sampling and Testing for Fertility and Crop Suitability Assessment Project led by the Soil Survey Division (SSD) in 2017.  
 Users noting errors or omissions in this publication are requested to inform the BSWM, SRDC Bldg., Elliptical Rd. cor. Visayas Avenue, Diliman, Quezon City, Philippines or visit the BSWM website ([www.bswm.da.gov.ph](http://www.bswm.da.gov.ph)).  
 Copyright © 2017. All rights reserved to the Bureau of Soils and Water Management. No part of this publication may be reproduced, stored in a retrieval system or published without written consent from the BSWM. Prepared and produced by the Geomatics and Soil Information Technology Division, BSWM.



Fertilizer Group No.	Recommended Fertilizer Rate (kg per hectare)																Recommended Equivalens Fertilizer Material (kg/bags per hectare)								Area	%									
	Hybrid Rice								Inbred Rice								Hybrid Rice				Inbred Rice														
	Wet Season				Dry Season				Wet Season				Dry Season				Hybrid		Inbred		Wet Season		Dry Season				Wet Season		Dry Season						
	N	P <sub>2</sub> O <sub>5</sub>	K <sub>2</sub> O	Zn	N	P <sub>2</sub> O <sub>5</sub>	K <sub>2</sub> O	Zn	N	P <sub>2</sub> O <sub>5</sub>	K <sub>2</sub> O	Zn	N	P <sub>2</sub> O <sub>5</sub>	K <sub>2</sub> O	Zn	Wet	Dry	Wet	Dry	Wet	Dry	Wet	Dry			Wet	Dry							
1	23	0	0	5	0	0	5	23	0	0	5	23	0	0	5	23.00	0	23.00	0	1 bag Urea 5 kg Zinc 10 bags org. Fert.	1 bag Urea 5 kg Zinc 10 bags org. Fert.	1 bag Urea 5 kg Zinc 10 bags org. Fert.	1 bag Urea 5 kg Zinc 10 bags org. Fert.												
2	23	0	30	0	0	30	0	23	0	20	0	23	0	20	0	53.00	30.00	43.00	20.00	1 bag 0-0-60 1.0 bag Urea 10 bags Org. Fert.	1 bag 0-0-60 10 bags Org. Fert.	1/2 bag 0-0-60 1 bag Urea 10 bags Org. Fert.	1/2 bag 0-0-60 10 bags Org. Fert.												
3	23	7	7	5	0	7	7	23	7	7	5	23	7	7	5	35.00	12.00	35.00	12.00	1 bag 14-14-14 3/4 bag urea 5 kg Zinc 10 bags org. Fert.	1/4 bag 0-0-60 3/4 bag 0-18-0 5 kg Zinc 10 bags org. Fert.	1 bag 14-14-14 3/4 bag Urea 5 kg Zinc 10 bags org. Fert.	1/4 bag 0-0-60 3/4 bag Urea 5 kg Zinc 10 bags org. Fert.												
4	23	7	50	10	0	7	50	23	0	30	10	23	0	30	10	78.00	54.00	53.00	20.00	1 3/4 bags 0-0-60 3/4 bag 0-18-0 10 kg Zinc 10 bags org. Fert.	1 3/4 bags 0-0-60 3/4 bags 0-18-0 10 kg Zinc 10 bags org. Fert.	1 bag 0-0-60 1 bag Urea 10 bags org. Fert.	1 bag 0-0-60 10 kg Zinc 10 bags org. Fert.												
5	50	0	0	5	60	0	5	30	0	0	5	40	0	0	5	50	60	30	40	2 1/4 bags Urea 5 kg Zinc 10 bags org. Fert.	5 kg Zinc 10 bags org. Fert.	1 1/4 bags Urea 5 kg Zinc 10 bags org. Fert.	1 3/4 bags urea 10 kg Zinc 10 bags org. Fert.												
6	50	7	30	10	60	7	30	30	7	20	10	40	7	20	10	85	95	50	60	1 bag 14-14-14 3/4 bag 0-0-60 1 3/4 bags Urea 10 kg Zinc 10 bags org. Fert.	1 bag 14-14-14 3/4 bag 0-0-60 2 1/4 bags Urea 10 kg Zinc 10 bags org. Fert.	1 bag 14-14-14 1/2 bag 0-0-60 1 bag Urea 10 kg Zinc 10 bags org. Fert.	1 bag 14-14-14 1/2 bag 0-0-60 1 1/2 bag Urea 10 kg Zinc 10 bags org. Fert.												
7	70	7	0	10	80	7	0	50	0	0	10	60	0	0	10	75	85	50	60	3/4 bags 16-20-0 2 3/4 bags Urea 10 kg Zinc 10 bags org. Fert.	3/4 bags 16-20-0 3 1/4 bags urea 10 kg Zinc 10 bags org. Fert.	2 1/4 bags Urea 10 kg Zinc 10 bags org. Fert.	2 1/2 bag Urea 10 kg Zinc 10 bags org. Fert.												
8	70	7	7	5	80	7	7	50	0	7	5	60	0	7	5	82	92	57	67	1 bag 14-14-14 2 3/4 bag 0-0-60 5 kg Zinc 10 bags org. Fert.	1 bag 14-14-14 3 1/4 bag urea 5 kg Zinc 10 bags org. Fert.	1/4 bag 0-0-60 2 1/4 bag Urea 5 kg Zinc 10 bags org. Fert.	1/4 bags 0-0-60 2 1/2 bags Urea 5 kg Zinc 10 bags org. Fert.									11,387.73	23.77		
9	70	7	30	10	80	7	30	50	0	20	10	60	0	20	10	105	114	52	62	1 bag 14-14-14 3/4 bags 0-0-60 2 1/2 urea 10 kg Zinc 10 bags org. Fert.	1 bag 14-14-14 3/4 bags 0-0-60 3 1/4 bags urea 10 kg Zinc 10 bags org. Fert.	3/4 bag 0-0-60 2 1/4 bag Urea 10 kg Zinc 10 bags org. Fert.	3/4 bags 0-0-60 2 1/2 bags Urea 10 kg Zinc 10 bags org. Fert.												
10	70	10	0	10	80	10	0	50	10	0	10	60	10	0	10	76.66	86.66	56.66	66.66	1 bag 16-20-0 2 3/4 bags Urea 10 kg Zinc 10 bags Org. Fert.	1 bag 16-20-0 3 bags Urea 10 kg Zinc 10 bags Org. Fert.	1 bag 16-20-0 2 bags Urea 10 kg Zinc 10 bags Org. Fert.	1 bag 16-20-0 2.5 bags Urea 10 kg Zinc 10 bags Org. Fert.												
11	70	30	50	10	80	30	50	50	20	30	10	60	20	30	10	140	150	113	123	1 3/4 bags 0-0-60 3 bags 16-20-0 2 bags Urea 10 kg Zinc 10 bags org. Fert.	1 3/4 bags 0-0-60 3 bags 16-20-0 2 1/2 bags Urea 10 kg Zinc 10 bags org. Fert.	1 bag 0-0-60 2 bags 16-20-0 1 1/2 bags Urea 10 kg Zinc 10 bags org. Fert.	1 bag 0-0-60 2 bags 16-20-0 2 bags Urea 10 kg Zinc 10 bags org. Fert.												
12	80	7	50	10	100	7	50	60	0	30	10	80	0	30	10	135	154.6	95	114.6	1 bag 14-14-14 1 1/2 bag 0-0-60 3 1/4 bags Urea 10 kg Zinc 10 bags org. Fert.	1 bag 14-14-14 1 1/2 bag 0-0-60 4 bags Urea 10 kg Zinc 10 bags org. Fert.	1 bag 0-0-60 2 1/2 bags Urea 10 kg Zinc 10 bags org. Fert.	1 bag 0-0-60 3 1/2 bags Urea 10 kg Zinc 10 bags org. Fert.												
13	80	30	0	10	100	30	0	60	20	0	10	80	20	0	10	100	120	93	113	3 bags 16-20-0 2 1/2 bags Urea 10 kg Zinc 10 bags org. Fert.	3 bags 16-20-0 3 1/4 bags Urea 10 kg Zinc 10 bags org. Fert.	2 bags 16-20-0 2 bags Urea 10 kg Zinc 10 bags org. Fert.	2 bags 16-20-0 2 3/4 bags Urea 10 kg Zinc 10 bags org. Fert.												
14	90	0	30	10	100	0	30	70	0	20	10	80	0	20	10	120	130	90	100	1 bag 0-0-60 4 bags Urea 10 kg Zinc 10 bags Org. Fert.	1 bag 0-0-60 4 1/2 bags Urea 10 kg Zinc 10 bags Org. Fert.	1 bag 0-0-60 3 bags Urea 10 kg Zinc 10 bags Org. Fert.	1 bag 0-0-60 3 1/2 bags Urea 10 kg Zinc 10 bags Org. Fert.												
15	90	0	50	10	100	0	50	70	0	40	10	80	0	40	10	140	150	110	120	1 3/4 bag 0-0-60 4 bags Urea 10 kg Zinc 10 bags Org. Fert.	1 3/4 bag 0-0-60 4 1/2 bags Urea 10 kg Zinc 10 bags Org. Fert.	1 1/2 bag 0-0-60 3 bags Urea 10 kg Zinc 10 bags Org. Fert.	1 1/2 bag 0-0-60 3 1/2 bags Urea 10 kg Zinc 10 bags Org. Fert.												
16	90	20	0	10	100	20	0	70	20	0	10	80	20	0	10	103.34	113.34	83.34	93.34	2 bags 16-20-0 3 1/4 bags Urea 10 kg Zinc 10 bags Org. Fert.	2 bags 16-20-0 3 1/2 bags Urea 10 kg Zinc 10 bags Org. Fert.	2 bags 16-20-0 2 1/2 bags Urea 10 kg Zinc 10 bags Org. Fert.	2 bags 16-20-0 3.0 bags Urea 10 kg Zinc 10 bags Org. Fert.												
17	90	30	0	10	100	30	0	70	20	0	10	80	20	0	10	110	120	83.5	93.5	3 bags 16-20-0 2 3/4 bags Urea 10 kg Zinc 10 bags org. Fert.	3 bags 16-20-0 3 1/4 bags Urea 10 kg Zinc 10 bags org. Fert.	2 bags 16-20-0 2 1/4 bags Urea 10 kg Zinc 10 bags org. Fert.	2 bags 16-20-0 2 3/4 bags Urea 10 kg Zinc 10 bags org. Fert.									9,054.61	18.9		
18	90	30	7	10	100	30	7	70	20	7	10	80	20	7	10	117	127	90.5	100.5	1 bag 14-14-14 2 1/4 bag 16-20-0 2 3/4 bag Urea 10 kg Zinc 10 bags org. Fert.	1 bag 14-14-14 2 1/4 bag 16-20-0 3 1/4 bag Urea 10 kg Zinc 10 bags org. Fert.	1 bag 14-14-14 1 1/4 bag 16-20-0 2 1/4 bag Urea 10 kg Zinc 10 bags org. Fert.	1 bag 14-14-14 1 1/4 bag 16-20-0 2 3/4 bag Urea 10 kg Zinc 10 bags org. Fert.												
19	90	30	30	10	100	30	30	70	20	20	10	80	20	20	10	140	127	103.5	113.5	1 bag 0-0-60 3 bags 16-20-0 2 3/4 bag Urea 10 kg Zinc 10 bags org. Fert.	1 bag 0-0-60 3 bags 16-20-0 3 1/4 bag Urea 10 kg Zinc 10 bags org. Fert.	3/4 bag 0-0-60 2 bags 16-20-0 2 1/4 bag Urea 10 kg Zinc 10 bags org. Fert.	3/4 bag 0-0-60 2 bags 16-20-0 2 3/4 bag Urea 10 kg Zinc 10 bags org. Fert.												
20	90	50	30	10	100	50	30	70	30	20	10	80	30	20	10	140.00	150.00	103.33	113.33	1 bag 0-0-60 5 bags 16-20-0 2 1/4 bags urea 10 kg zinc 10 bags Org. Fert.	1 bag 0-0-60 5 bags 16-20-0 2 1/2 bags urea 10 kg zinc 10 bags Org. Fert.	1 bag 0-0-60 3 bags 16-20-0 2 bags urea 10 kg zinc 10 bags Org. Fert.	1 bag 0-0-60 3 bags 16-20-0 2 1/2 bags urea 10 kg zinc 10 bags Org. Fert.												
21	90	50	50	5	100	50	50	70	30	30	5	80	30	30	5	173.33	183.33	120.00	130.00	1 3/4 bag 0-0-60 5 bags 16-20-0 2 1/4 bags urea 5 kg zinc 10 bags Org. Fert.	1 3/4 bag 0-0-60 5 bags 16-20-0 2 1/2 bags urea 5 kg zinc 10 bags Org. Fert.	1 bag 0-0-60 3 bags 16-20-0 2 bags urea 5 kg zinc 10 bags Org. Fert.	1 bag 0-0-60 3 bags 16-20-0 2 1/2 bags urea 5 kg zinc 10 bags Org. Fert.												
22	100	7	0	10	120	7	0	80	7	0	10	100	7	0	10	104.6	124.6	84.6	104.6	3/4 bag 16-20-0 4 bags Urea 10 kg Zinc 10 bags org. Fert.	3/4 bag 16-20-0 5 bags Urea 10 kg Zinc 10 bags org. Fert.	3/4 bag 16-20-0 3 1/4 bags Urea 10 kg Zinc 10 bags org. Fert.	3/4 bag 16-20-0 4 bags Urea 10 kg Zinc 10 bags org. Fert.									6,223.25	12.99		
23	100	30	30	5	120	30	30	80	20	20	5	100	20	20	5	150	170	113.5	133.5	1 bag 0-0-60 3 bags 16-20-0 3 1/4 bag Urea 5 kg Zinc 10 bags org. Fert.	1 bag 0-0-60 3 bags 16-20-0 4 1/4 bag Urea 5 kg Zinc 10 bags org. Fert.	3/4 bag 0-0-60 2 bags 16-20-0 2 3/4 bag Urea 5 kg Zinc 10 bags org. Fert.	3/4 bag 0-0-60 2 bags 16-20-0 3 3/4 bag Urea 5 kg Zinc 10 bags org. Fert.												
24	100	30	50	none	120	30	50	80	20	20	none	100	20	30	none	170	190	123.5	143.5	3 bags 16-20-0 1 3/4 bags 0-0-60 3 1/4 bags urea 10 bags org. Fert.	3 bags 16-20-0 1 3/4 bags 0-0-60 4 1/4 bags urea 10 bags org. Fert.	3/4 bag 0-0-60 2 bags 16-20-0 2 3/4 bags Urea 10 bags org. Fert.	3/4 bag 0-0-60 2 bags 16-20-0 3 3/4 bags Urea 10 bags org. Fert.												
25	100	50	0	20	120	50	0	80	40	0	20	100	40	0	20	133.34	153.34	120	140	5 bags 16-20-0 2 1/2 bags Urea 20 kg Zinc 10 bags Org. Fert.	5 bags 16-20-0 3 1/2 bags Urea 20 kg Zinc 10 bags Org. Fert.	4 bags 16-20-0 2 bags Urea 20 kg Zinc 10 bags Org. Fert.	4 bags 16-20-0 3.0 bags Urea 20 kg Zinc 10 bags Org. Fert.												
26	110	30	0	20	120	30	0	90	20	0	20	100	20	0	20	130	140	103.5	113.5	3 bags 16-20-0 3 3/4 bags Urea 20 kg Zinc 10 bags Org. Fert.	3 bags 16-20-0 4 1/4 bags Urea 20 kg Zinc 10 bags Org. Fert.	2 bags 16-20-0 3 1/4 bags Urea 20 kg Zinc 10 bags Org. Fert.	2 bags 16-20-0 3 3/4 bags Urea 20 kg Zinc 10 bags Org. Fert.												
27	110	50	0	10	120	50	0	90	30	0	10	100	30	0	10	143.50	153.50	110.00	120.00	5 bags 16-20-0 3 bags urea 10 kg zinc 10 bags Org. Fert.	5 bags 16-20-0 3 1/2 bags urea 10 kg zinc 10 bags Org. Fert.	3 bags 16-20-0 2 3/4 bags Urea 10 kg zinc 10 bags Org. Fert.	3 bags 16-20-0 3 1/4 bags urea 10 kg zinc 10 bags Org. Fert.									2,539.12	5.3		
28	110	50	30	10	120	50	30	90	30	20	10	100	30	20	10	173	183	130	140	1 bag 0-0-60 5 bags 16-20-0 3 bags Urea 10 kg Zinc 10 bags org. Fert.	1 bag 0-0-60 5 bags 16-20-0 3 1/2 bags Urea 10 kg Zinc 10 bags org. Fert.	3/4 bag 0-0-60 3 bags 16-20-0 2 3/4 bags Urea 10 kg Zinc 10 bags org. Fert.	3/4 bag 0-0-60 3 bags 16-20-0 3 1/4 bags Urea 10 kg Zinc 10 bags org. Fert.												
29	110	50	50	10	120	50	50	90	30	30	10	100	30	30	0	193	203.5	140	150	1 3/4 bag 0-0-60 5 bags 16-20-0 3 bags Urea 10 kg Zinc 10 bags org. Fert.	1 3/4 bag 0-0-60 5 bags 16-20-0 3 1/2 bags Urea 10 kg Zinc 10 bags org. Fert.	1 bag 0-0-60 3 bags 16-20-0 2 3/4 bags Urea 10 kg Zinc 10 bags org. Fert.	1 bag 0-0-60 3 bags 16-20-0 3 1/4 bags Urea 10 kg Zinc 10 bags org. Fert.												
30	110	70	30	10	120	70	30	90	60	20	10	100	60	20	10	186.67	196.67	150.00	160.00	1 bag 0-0-60 7 bags 16-20-0 2 1/4 bags urea 10 kg zinc 10 bags Org. Fert.	1 bag 0-0-60 7 bags 16-20-0 2 3/4 bags urea 10 kg zinc 10 bags Org. Fert.	3/4 bag 0-0-60 6 bags 16-20-0 1 3/4 bags urea 10 kg zinc 10 bags Org. Fert.	3/4 bag 0-0-60 6 bags 16-20-0 2 1/4 bags urea 10 kg zinc 10 bags Org. Fert.												
31	110	70	70	10	120	70	70	90	60	60	10	100	60	60	10	173.33	183.33	120.00	130.00	2 1/4 bags 0-0-60 7 bags 16-20-0 2 1/2 bags urea 10 kg zinc 10 bags Org. Fert.	2 1/4 bags 0-0-60 7 bags 16-20-0 2 3/4 bags urea 10 kg zinc 10 bags Org. Fert.	2 bags 0-0-60 6 bags 16-20-0 2 bags urea 10 kg zinc 10 bags Org. Fert.	2 bags 0-0-60 6 bags 16-20-0 2 1/4 bags urea 10 kg zinc 10 bags Org. Fert.												
32	120	30	0	10	140	30	0	100	20	0	10	120	20	0	10	140																			