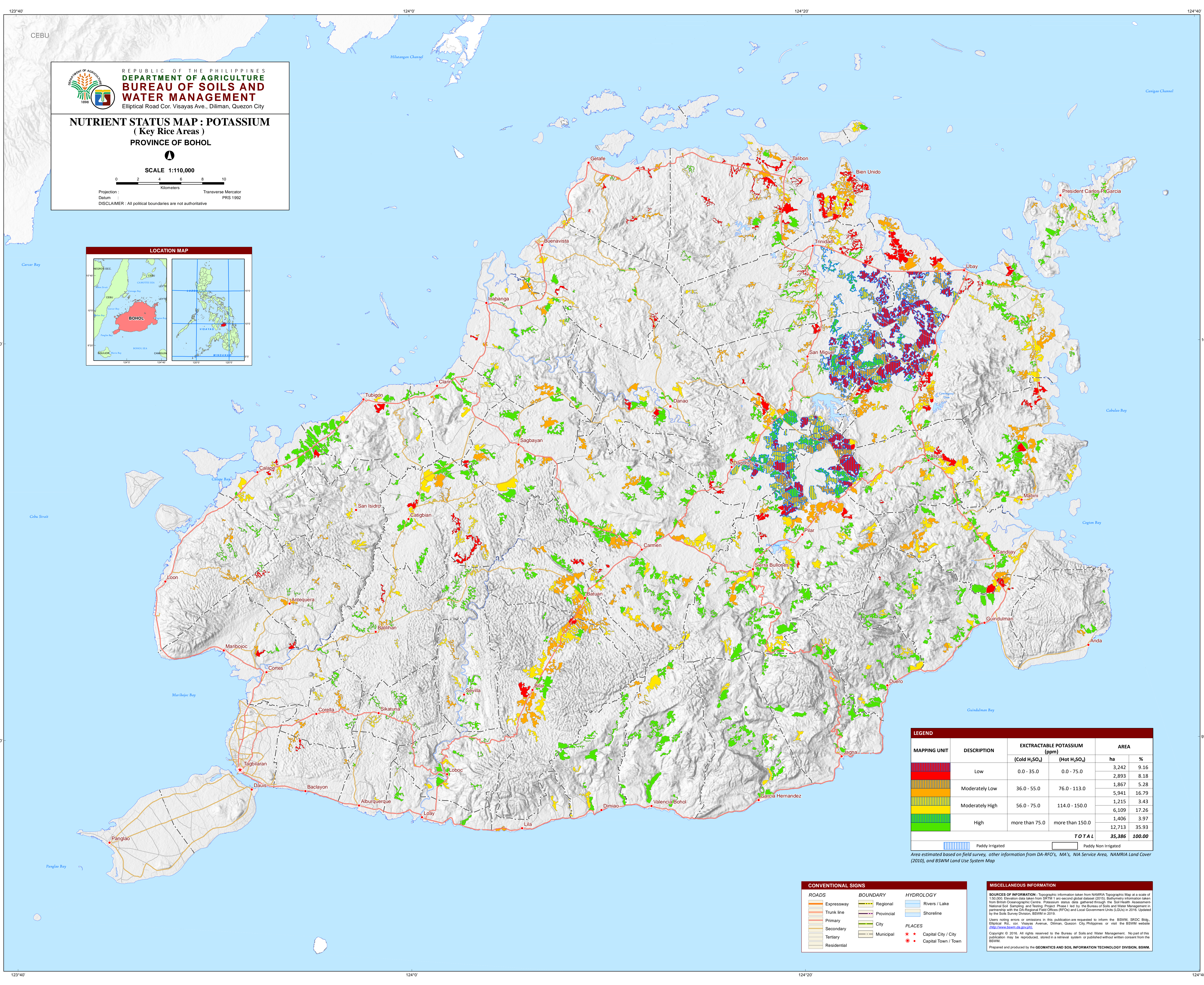
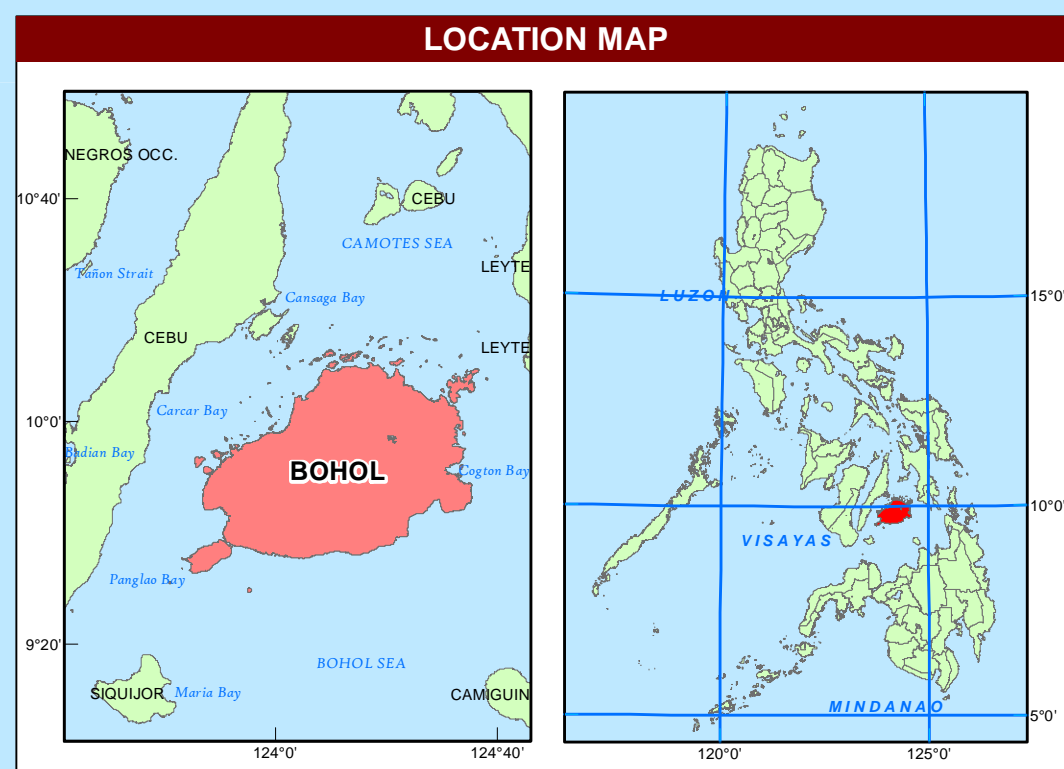

**REPUBLIC OF THE PHILIPPINES**  
**DEPARTMENT OF AGRICULTURE**  
**BUREAU OF SOILS AND**  
**WATER MANAGEMENT**  
 Elliptical Road Cor. Visayas Ave., Diliman, Quezon City

**NUTRIENT STATUS MAP : POTASSIUM**  
**( Key Rice Areas )**  
**PROVINCE OF BOHOL**

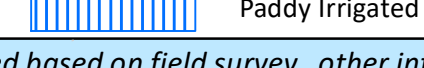
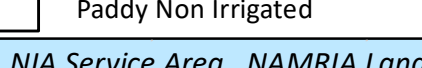
SCALE 1:110,000  
 0 2 4 6 8 10  
 Kilometers

Projection : Transverse Mercator  
 Datum : PRS 1992  
 DISCLAIMER : All political boundaries are not authoritative



**LEGEND**

MAPPING UNIT	DESCRIPTION	EXTRACTABLE POTASSIUM (ppm)		AREA	
		(Cold H <sub>2</sub> SO <sub>4</sub> )	(Hot H <sub>2</sub> SO <sub>4</sub> )	ha	%
Low		0.0 - 35.0	0.0 - 75.0	3,242	9.16
				2,893	8.18
Moderately Low		36.0 - 55.0	76.0 - 113.0	1,867	5.28
				5,941	16.79
Moderately High		56.0 - 75.0	114.0 - 150.0	1,215	3.43
				6,109	17.26
High		more than 75.0	more than 150.0	1,406	3.97
				12,713	35.93
<b>TOTAL</b>				<b>35,386</b>	<b>100.00</b>

 Paddy Irrigated  
 Paddy Non Irrigated

Area estimated based on field survey, other information from DA-RFO's, MA's, NIA Service Area, NAMRIA Land Cover (2010), and BSWM Land Use System Map

**CONVENTIONAL SIGNS**

ROADS	BOUNDARY	HYDROLOGY
Expressway	Regional	Rivers / Lake
Trunk line	Provincial	Shoreline
Primary	City	
Secondary	Municipal	
Tertiary		
Residential		

**PLACES**

- ★ Capital City / City
- Capital Town / Town

**MISCELLANEOUS INFORMATION**

**SOURCES OF INFORMATION :** Topographic information taken from NAMRIA Topographic Map at a scale of 1:50,000. Elevation data taken from SRTM 1 arc-second global dataset (2015). Bathymetry information taken from Seafloor Oceanographic Centre. Potassium status data gathered through the Soil Health Assessment National Soil Sampling and Testing Project Phase I led by the Bureau of Soils and Water Management in partnership with the DA Regional Field Offices (RFOs) and Local Government Units (LGUs) in 2016. Updated by the Soils Survey Division, BSWM in 2019.

Users noting errors or omissions in this publication are requested to inform the BSWM, SRDC Bldg., Elliptical Rd., cor. Visayas Avenue, Diliman, Quezon City, Philippines or visit the BSWM website (<http://www.bswm.dag.gov.ph>).

Copyright © 2016. All rights reserved to the Bureau of Soils and Water Management. No part of this publication may be reproduced, stored in a retrieval system or published without written consent from the BSWM.

Prepared and produced by the **GEOMATICS AND SOIL INFORMATION TECHNOLOGY DIVISION, BSWM.**