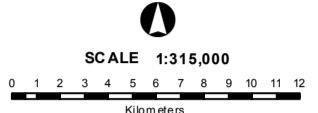
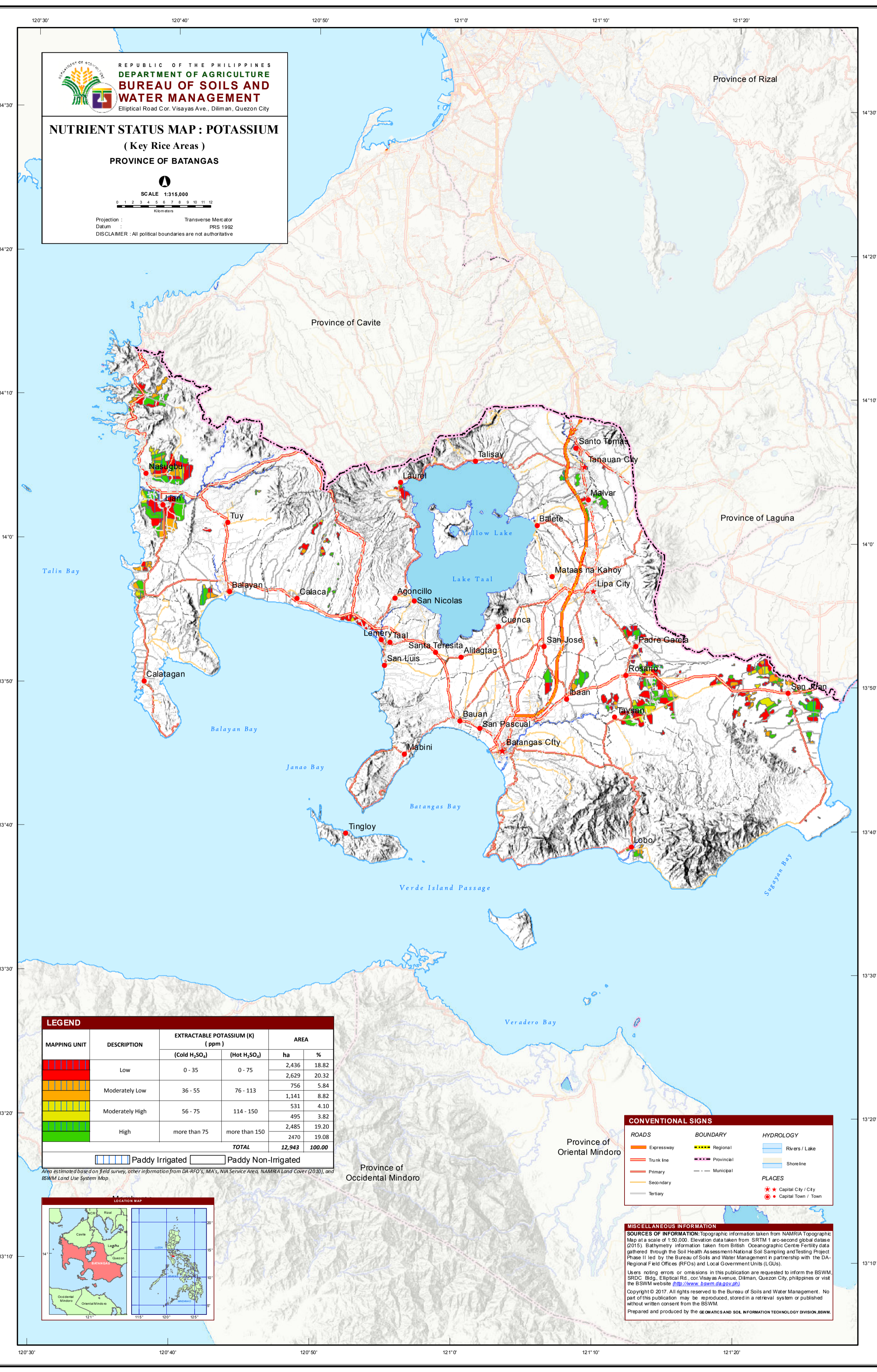


REPUBLIC OF THE PHILIPPINES  
**DEPARTMENT OF AGRICULTURE**  
**BUREAU OF SOILS AND**  
**WATER MANAGEMENT**  
 Elliptical Road Cor. Visayas Ave., Diliman, Quezon City

**NUTRIENT STATUS MAP : POTASSIUM**  
 ( Key Rice Areas )  
**PROVINCE OF BATANGAS**



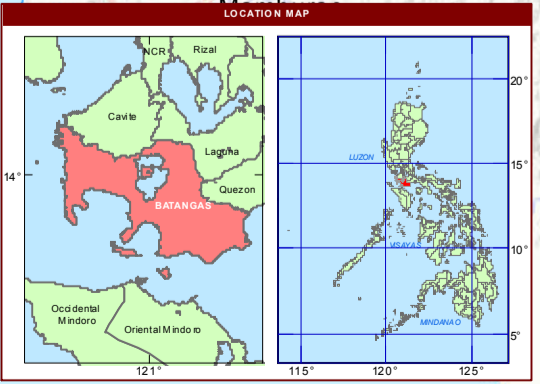
Projection : Transverse Mercator  
 Datum : PRS 1992  
 DISCLAIMER : All political boundaries are not authoritative



MAPPING UNIT	DESCRIPTION	EXTRACTABLE POTASSIUM (K) (ppm)		AREA	
		(Cold H <sub>2</sub> SO <sub>4</sub> )	(Hot H <sub>2</sub> SO <sub>4</sub> )	ha	%
Low		0 - 35	0 - 75	2,436	18.82
				2,629	20.32
Moderately Low		36 - 55	76 - 113	756	5.84
				1,141	8.82
Moderately High		56 - 75	114 - 150	531	4.10
				495	3.82
High		more than 75	more than 150	2,485	19.20
				2470	19.08
<b>TOTAL</b>				<b>12,943</b>	<b>100.00</b>

Legend for irrigation status:  
 Paddy Irrigated  
 Paddy Non-Irrigated

Area estimated based on field survey, other information from DA-RFO's, MA's, NIA Service Area, NAMRIA Land Cover (2010), and BSWM Land Use System Map.



CONVENTIONAL SIGNS		
<b>ROADS</b>	<b>BOUNDARY</b>	<b>HYDROLOGY</b>
Expressway	Regional	Rivers / Lake
Trunk line	Provincial	Shore Line
Primary	Municipal	<b>PLACES</b>
Secondary		★ Capital City / City
Tertiary		● Capital Town / Town

**MISCELLANEOUS INFORMATION**  
**SOURCES OF INFORMATION:** Topographic information taken from NAMRIA Topographic Map at a scale of 1:50,000. Elevation data taken from SRTM 1 arc-second global data set (2015). Bathymetry information taken from British Oceanographic Centre Fertility data gathered through the Soil Health Assessment-National Soil Sampling and Testing Project Phase II led by the Bureau of Soils and Water Management in partnership with the DA-Regional Field Offices (RFOs) and Local Government Units (LGUs).  
 Users noting errors or omissions in this publication are requested to inform the BSWM, SRDC Bldg., Elliptical Rd., cor. Visayas Avenue, Diliman, Quezon City, Philippines or visit the BSWM website (<http://www.bswm.dag.gov.ph>).  
 Copyright © 2017. All rights reserved to the Bureau of Soils and Water Management. No part of this publication may be reproduced, stored in a retrieval system or published without written consent from the BSWM.  
 Prepared and produced by the GEOMATICS AND SOIL INFORMATION TECHNOLOGY DIVISION, BSWM.