
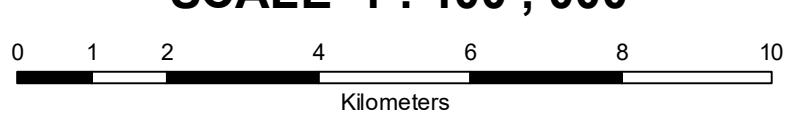
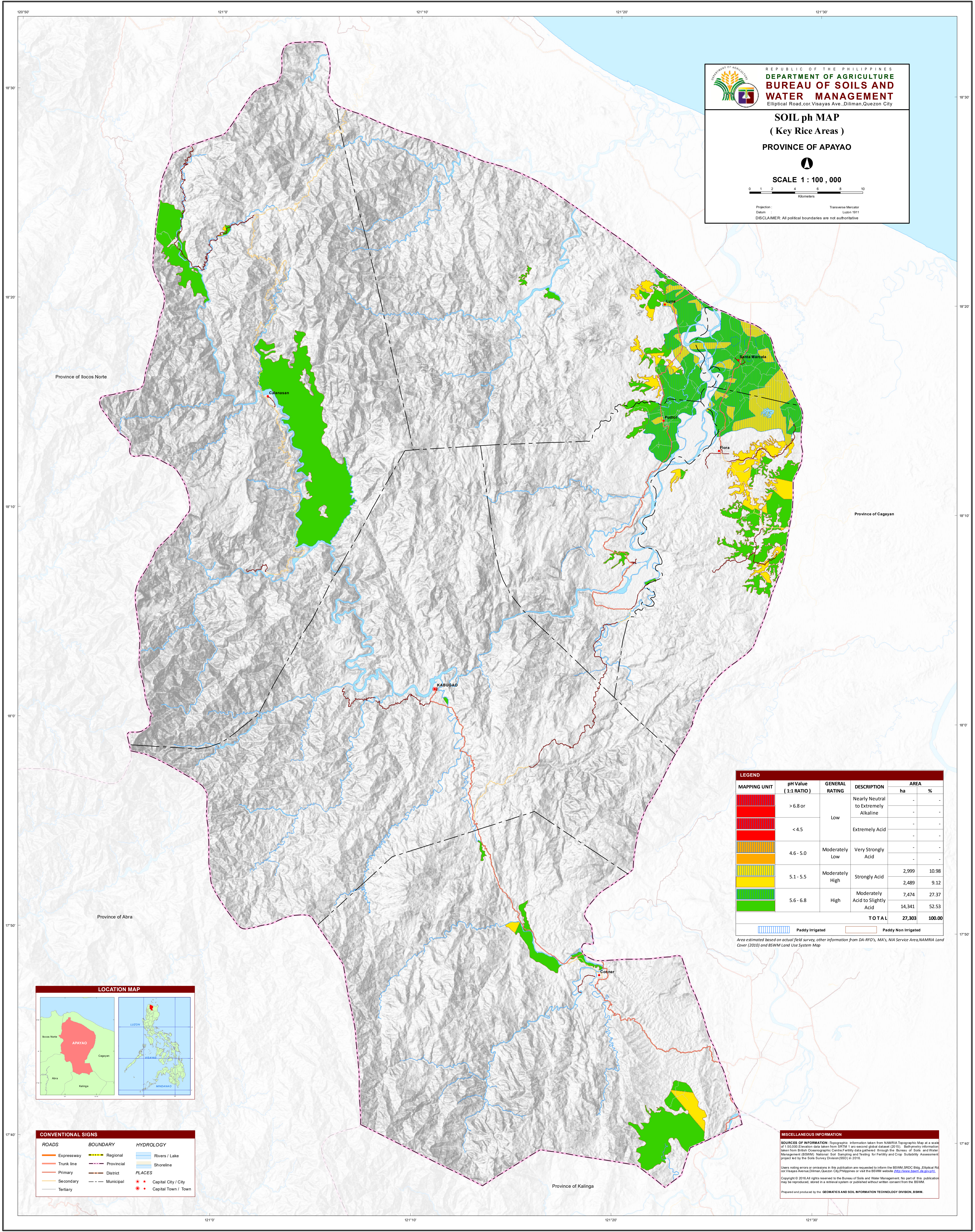

REPUBLIC OF THE PHILIPPINES
DEPARTMENT OF AGRICULTURE
BUREAU OF SOILS AND WATER MANAGEMENT
 Elliptical Road, cor. Visayas Ave., Diliman, Quezon City

SOIL pH MAP
(Key Rice Areas)
PROVINCE OF APAYAO


SCALE 1 : 100 , 000


Projection : Transverse Mercator
 Datum : Luzon 1911
 DISCLAIMER: All political boundaries are not authoritative

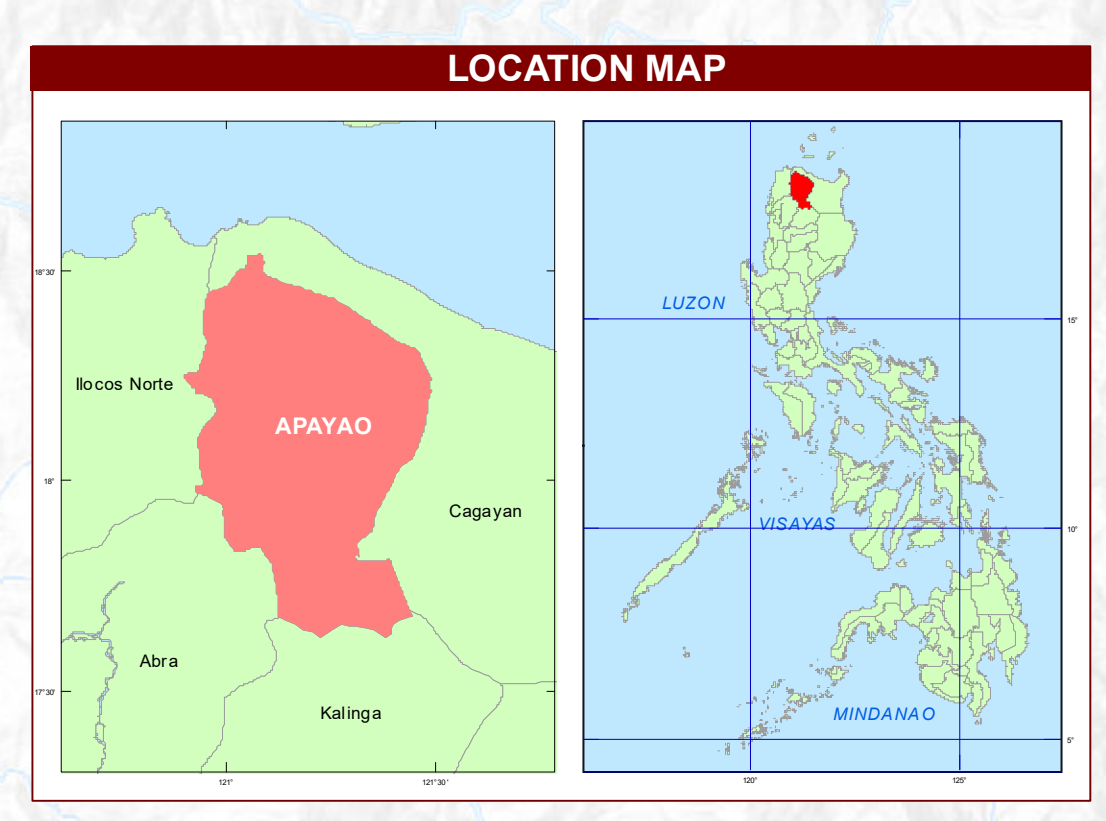


LEGEND

MAPPING UNIT	pH Value (1:1 RATIO)	GENERAL RATING	DESCRIPTION	AREA	
				ha	%
	> 6.8 or	Low	Nearly Neutral to Extremely Alkaline	-	-
	< 4.5		Extremely Acid	-	-
	4.6 - 5.0	Moderately Low	Very Strongly Acid	-	-
	5.1 - 5.5	Moderately High	Strongly Acid	2,999	10.98
	5.6 - 6.8	High	Moderately Acid to Slightly Acid	7,474	27.37
				14,341	52.53
TOTAL				27,303	100.00

Paddy Irrigated Paddy Non Irrigated

Area estimated based on actual field survey; other information from DA-RFO's, MA's, NIA Service Area, NAMRIA Land Cover (2010) and BSWM Land Use System Map



CONVENTIONAL SIGNS

ROADS	BOUNDARY	HYDROLOGY
Expressway	Regional	Rivers / Lake
Trunk line	Provincial	Shoreline
Primary	District	PLACES
Secondary	Municipal	Capital City / City
Tertiary	Capital Town / Town	

MISCELLANEOUS INFORMATION

SOURCES OF INFORMATION : Topographic information taken from NAMRIA Topographic Map at a scale of 1:50,000; Elevation data taken from SRTM 1 arc second global dataset (2010); Bathymetry information taken from British Oceanographic Centre's bathymetry data gathered through the Bureau of Soils and Water Management (BSWM) National Soil Sampling and Testing for Fertility and Crop Suitability Assessment project led by the Soils Survey Division (SSD) in 2016.

Users noting errors or omissions in this publication are requested to inform the BSWM SRDC Bldg., Elliptical Rd. cor. Visayas Avenue, Diliman, Quezon City, Philippines or visit the BSWM website (<http://www.dawmi.da.gov.ph>).

Copyright © 2016 All rights reserved to the Bureau of Soils and Water Management. No part of this publication may be reproduced, stored in a retrieval system or published without written consent from the BSWM.

Prepared and produced by the **GEOMATICS AND SOIL INFORMATION TECHNOLOGY DIVISION, BSWM.**